

## Product datasheet

# Anti-TXNDC5 antibody ab10292

[3 References](#) [1 Image](#)

### Overview

---

<b>Product name</b>	Anti-TXNDC5 antibody
<b>Description</b>	Rabbit polyclonal to TXNDC5
<b>Host species</b>	Rabbit
<b>Tested applications</b>	<b>Suitable for:</b> WB
<b>Species reactivity</b>	<b>Reacts with:</b> Human
<b>Immunogen</b>	Recombinant fragment within Mouse TXNDC5 aa 50 to the C-terminus. The exact immunogen sequence used to generate this antibody is proprietary information. If additional detail on the immunogen is needed to determine the suitability of the antibody for your needs, please <b>contact</b> our Scientific Support team to discuss your requirements. Database link: <a href="#">Q91W90</a>
<b>Positive control</b>	WB: HepG2, HeLa and HEK293 whole cell lysate.
<b>General notes</b>	<p>ERp19 and ERp46 are two newly discovered ER luminal proteins, related to protein disulphide isomerase. Western and Northern blot analyses have revealed that both ERp19 and ERp46 and their respective mRNAs are highly expressed in the liver as compared with other tissues. Both proteins are enriched in purified liver ER vesicles and were localized specifically to the ER in McA-RH7777 hepatocytes. See Knoblach et al. for details.</p> <p>The Life Science industry has been in the grips of a reproducibility crisis for a number of years. Abcam is leading the way in addressing this with our range of recombinant monoclonal antibodies and knockout edited cell lines for gold-standard validation. Please check that this product meets your needs before purchasing.</p> <p>If you have any questions, special requirements or concerns, please send us an inquiry and/or contact our Support team ahead of purchase. Recommended alternatives for this product can be found below, along with publications, customer reviews and Q&amp;As</p>

### Properties

---

<b>Form</b>	Liquid
<b>Storage instructions</b>	Shipped at 4°C. Store at +4°C short term (1-2 weeks). Upon delivery aliquot. Store at -20°C or -80°C. Avoid freeze / thaw cycle.
<b>Purity</b>	Immunogen affinity purified

## Primary antibody notes

ERp19 and ERp46 are two newly discovered ER luminal proteins, related to protein disulphide isomerase. Western and Northern blot analyses have revealed that both ERp19 and ERp46 and their respective mRNAs are highly expressed in the liver as compared with other tissues. Both proteins are enriched in purified liver ER vesicles and were localized specifically to the ER in McA-RH7777 hepatocytes. See Knoblach et al. for details.

## Clonality

Polyclonal

## Isotype

IgG

## Applications

### The Abpromise guarantee

Our **Abpromise guarantee** covers the use of ab10292 in the following tested applications.

The application notes include recommended starting dilutions; optimal dilutions/concentrations should be determined by the end user.

Application	Abreviews	Notes
WB		1/1000. Detects a band of approximately 48 kDa (predicted molecular weight: 48 kDa).

## Target

### Function

Possesses thioredoxin activity. Has been shown to reduce insulin disulfide bonds. Also complements protein disulfide-isomerase deficiency in yeast.

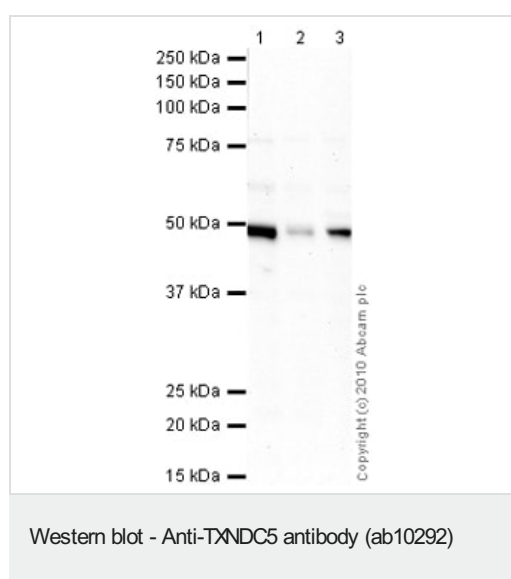
### Sequence similarities

Belongs to the protein disulfide isomerase family.  
Contains 3 thioredoxin domains.

### Cellular localization

Endoplasmic reticulum lumen.

## Images



**All lanes :** Anti-TXNDC5 antibody (ab10292) at 1 µg/ml

**Lane 1 :** HepG2 (Human hepatocellular liver carcinoma cell line)  
Whole Cell Lysate

**Lane 2 :** HeLa (Human epithelial carcinoma cell line) Whole Cell  
Lysate

**Lane 3 :** HEK293 (Human embryonic kidney cell line) Whole Cell  
Lysate

Lysates/proteins at 10 µg per lane.

### Secondary

**All lanes :** Goat polyclonal to Rabbit IgG - H&L - Pre-Adsorbed  
(HRP) at 1/3000 dilution

Developed using the ECL technique.

Performed under reducing conditions.

**Predicted band size:** 48 kDa

**Observed band size:** 48 kDa

**Additional bands at:** 60 kDa, 76 kDa. We are unsure as to the identity of these extra bands.

**Exposure time:** 8 minutes

**Please note:** All products are "FOR RESEARCH USE ONLY. NOT FOR USE IN DIAGNOSTIC PROCEDURES"

### **Our Abpromise to you: Quality guaranteed and expert technical support**

---

- Replacement or refund for products not performing as stated on the datasheet
- Valid for 12 months from date of delivery
- Response to your inquiry within 24 hours
- We provide support in Chinese, English, French, German, Japanese and Spanish
- Extensive multi-media technical resources to help you
- We investigate all quality concerns to ensure our products perform to the highest standards

If the product does not perform as described on this datasheet, we will offer a refund or replacement. For full details of the Abpromise, please visit <https://www.abcam.com/abpromise> or contact our technical team.

### **Terms and conditions**

---

- Guarantee only valid for products bought direct from Abcam or one of our authorized distributors