

Product datasheet

Anti-TXNDC5 antibody ab237697

[3 Images](#)

Overview

Product name	Anti-TXNDC5 antibody
Description	Rabbit polyclonal to TXNDC5
Host species	Rabbit
Tested applications	Suitable for: WB, IHC-P
Species reactivity	Reacts with: Mouse, Human
Immunogen	Recombinant fragment corresponding to Human TXNDC5 aa 1-324. Database link: Q8NBS9
Positive control	WB: HepG2 and COLO 320 whole cell lysate; mouse stomach tissue lysate. IHC-P: Human colon cancer and gastric cancer tissue.
General notes	<p>The Life Science industry has been in the grips of a reproducibility crisis for a number of years. Abcam is leading the way in addressing this with our range of recombinant monoclonal antibodies and knockout edited cell lines for gold-standard validation. Please check that this product meets your needs before purchasing.</p> <p>If you have any questions, special requirements or concerns, please send us an inquiry and/or contact our Support team ahead of purchase. Recommended alternatives for this product can be found below, along with publications, customer reviews and Q&As</p>

Properties

Form	Liquid
Storage instructions	Shipped at 4°C. Store at +4°C short term (1-2 weeks). Upon delivery aliquot. Store at -20°C long term. Avoid freeze / thaw cycle.
Storage buffer	pH: 7.30 Preservative: 0.02% Sodium azide Constituents: 50% Glycerol (glycerin, glycerine), PBS
Purity	Immunogen affinity purified
Clonality	Polyclonal
Isotype	IgG

Applications

The Abpromise guarantee

Our **Abpromise guarantee** covers the use of ab237697 in the following tested applications.

The application notes include recommended starting dilutions; optimal dilutions/concentrations should be determined by the end user.

Application	Abreviews	Notes
WB		1/1000 - 1/5000.
IHC-P		1/20 - 1/200.

Target

Function

Possesses thioredoxin activity. Has been shown to reduce insulin disulfide bonds. Also complements protein disulfide-isomerase deficiency in yeast.

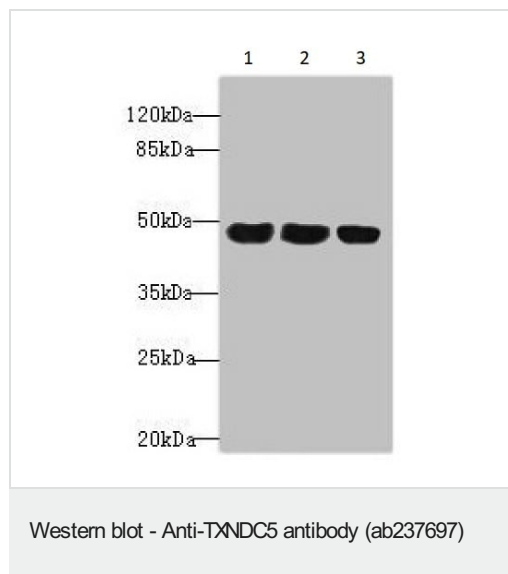
Sequence similarities

Belongs to the protein disulfide isomerase family.
Contains 3 thioredoxin domains.

Cellular localization

Endoplasmic reticulum lumen.

Images



All lanes : Anti-TXNDC5 antibody (ab237697) at 1/1000 dilution

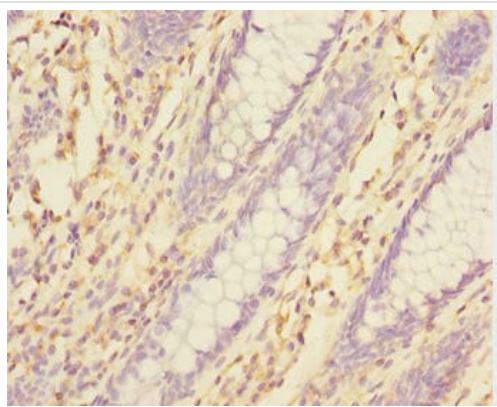
Lane 1 : HepG2 (human liver hepatocellular carcinoma cell line)
whole cell lysate

Lane 2 : COLO 320 (human colorectal adenocarcinoma cell line)
whole cell lysate

Lane 3 : Mouse stomach tissue lysate

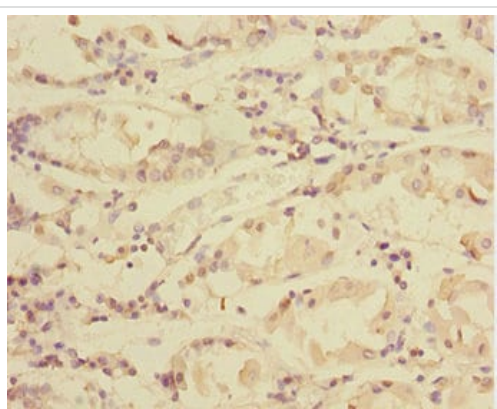
Secondary

All lanes : Goat polyclonal to rabbit IgG at 1/10000 dilution



Immunohistochemistry (Formalin/PFA-fixed paraffin-embedded sections) - Anti-TXNDC5 antibody (ab237697)

Paraffin-embedded human colon cancer tissue stained for TXNDC5 with ab237697 at 1/100 dilution in immunohistochemical analysis.



Immunohistochemistry (Formalin/PFA-fixed paraffin-embedded sections) - Anti-TXNDC5 antibody (ab237697)

Paraffin-embedded human gastric cancer tissue stained for TXNDC5 with ab237697 at 1/100 dilution in immunohistochemical analysis.

Please note: All products are "FOR RESEARCH USE ONLY. NOT FOR USE IN DIAGNOSTIC PROCEDURES"

Our Abpromise to you: Quality guaranteed and expert technical support

- Replacement or refund for products not performing as stated on the datasheet
- Valid for 12 months from date of delivery
- Response to your inquiry within 24 hours

- We provide support in Chinese, English, French, German, Japanese and Spanish
- Extensive multi-media technical resources to help you
- We investigate all quality concerns to ensure our products perform to the highest standards

If the product does not perform as described on this datasheet, we will offer a refund or replacement. For full details of the Abpromise, please visit <https://www.abcam.com/abpromise> or contact our technical team.

Terms and conditions

- Guarantee only valid for products bought direct from Abcam or one of our authorized distributors