


Product datasheet

Anti-U2AF35/U2AF1 antibody ab86305

★★★★★ [1 Abreviews](#) [9 References](#) [3 Images](#)

Overview

Product name	Anti-U2AF35/U2AF1 antibody
Description	Rabbit polyclonal to U2AF35/U2AF1
Host species	Rabbit
Tested applications	Suitable for: WB, IP, IHC-P
Species reactivity	Reacts with: Mouse, Human Predicted to work with: Rat, Horse, Chicken, Guinea pig, Cow, Dog, Turkey, Xenopus laevis, Chimpanzee, Zebrafish, Rhesus monkey, Orangutan, Xenopus tropicalis 
Immunogen	Synthetic peptide corresponding to Human U2AF35/U2AF1 aa 140-190. Database link: NP_006749.1
Positive control	HeLa, 293T and NIH3T3 whole cell lysates.
General notes	<p>The Life Science industry has been in the grips of a reproducibility crisis for a number of years. Abcam is leading the way in addressing this with our range of recombinant monoclonal antibodies and knockout edited cell lines for gold-standard validation. Please check that this product meets your needs before purchasing.</p> <p>If you have any questions, special requirements or concerns, please send us an inquiry and/or contact our Support team ahead of purchase. Recommended alternatives for this product can be found below, along with publications, customer reviews and Q&As</p>

Properties

Form	Liquid
Storage instructions	Shipped at 4°C. Upon delivery aliquot and store at -20°C. Avoid freeze / thaw cycles.
Storage buffer	pH: 6.8 Preservative: 0.09% Sodium azide Constituents: 0.1% BSA, Tris buffered saline
Purity	Immunogen affinity purified
Purification notes	ab86305 was affinity purified using an epitope specific to U2AF35/U2AF1 immobilized on solid support.
Clonality	Polyclonal
Isotype	IgG

Applications

The Abpromise guarantee

Our **Abpromise guarantee** covers the use of ab86305 in the following tested applications.

The application notes include recommended starting dilutions; optimal dilutions/concentrations should be determined by the end user.

Application	Abreviews	Notes
WB	★★★★★ (1)	1/2000 - 1/10000. Predicted molecular weight: 28 kDa.
IP		Use at 2-5 µg/mg of lysate.
IHC-P		1/100 - 1/500. Perform heat mediated antigen retrieval with citrate buffer pH 6 before commencing with IHC staining protocol.

Target

Function

Plays a critical role in both constitutive and enhancer-dependent splicing by mediating protein-protein interactions and protein-RNA interactions required for accurate 3'-splice site selection. Recruits U2 snRNP to the branch point. Directly mediates interactions between U2AF2 and proteins bound to the enhancers and thus may function as a bridge between U2AF2 and the enhancer complex to recruit it to the adjacent intron.

Sequence similarities

Belongs to the splicing factor SR family.
Contains 2 C3H1-type zinc fingers.
Contains 1 RRM (RNA recognition motif) domain.

Domain

The C-terminal SR-rich domain is required for interactions with SR proteins and the splicing regulators TRA and TRA2, and the N-terminal domain is required for formation of the U2AF1/U2AF2 heterodimer.

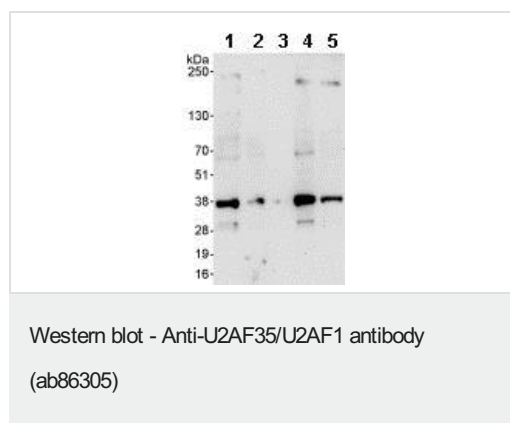
Post-translational modifications

Phosphorylated upon DNA damage, probably by ATM or ATR.

Cellular localization

Nucleus. Nucleus speckle.

Images



All lanes : Anti-U2AF35/U2AF1 antibody (ab86305) at 0.04 µg/ml

Lane 1 : HeLa whole cell lysate at 50 µg

Lane 2 : HeLa whole cell lysate at 15 µg

Lane 3 : HeLa whole cell lysate at 5 µg

Lane 4 : 293T whole cell lysate at 50 µg

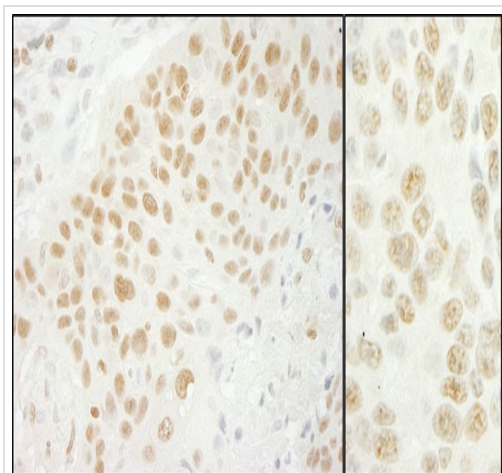
Lane 5 : NIH3T3 whole cell lysate at 50 µg

Developed using the ECL technique.

Predicted band size: 28 kDa

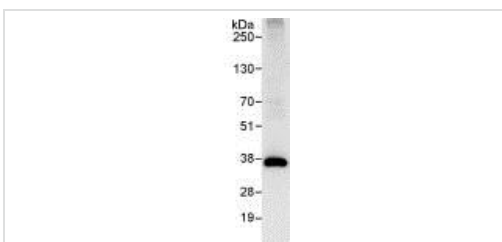
Observed band size: 36 kDa

Exposure time: 3 minutes



Immunohistochemistry (Formalin/PFA-fixed paraffin-embedded sections) analysis of human lung carcinoma (left) and mouse CT26 colon carcinoma (right) tissues labelling U2AF35/U2AF1 with ab86305 at 1/200 (1 µg/ml). Detection: DAB.

Immunohistochemistry (Formalin/PFA-fixed paraffin-embedded sections) - Anti-U2AF35/U2AF1 antibody (ab86305)



Detection of U2AF35/U2AF1 by Western Blot of Immunoprecipitate. ab86305, at 1 µg/ml, staining U2AF35/U2AF1 in HeLa whole cell lysate immunoprecipitated using ab86305 at 3 µg/mg lysate (1 mg/IP; 20% of IP loaded/lane).

Detection: Chemiluminescence with an exposure time of 10 seconds.

Immunoprecipitation - Anti-U2AF35/U2AF1 antibody (ab86305)

Please note: All products are "FOR RESEARCH USE ONLY. NOT FOR USE IN DIAGNOSTIC PROCEDURES"

Our Abpromise to you: Quality guaranteed and expert technical support

- Replacement or refund for products not performing as stated on the datasheet
- Valid for 12 months from date of delivery
- Response to your inquiry within 24 hours
- We provide support in Chinese, English, French, German, Japanese and Spanish
- Extensive multi-media technical resources to help you
- We investigate all quality concerns to ensure our products perform to the highest standards

If the product does not perform as described on this datasheet, we will offer a refund or replacement. For full details of the Abpromise, please visit <https://www.abcam.com/abpromise> or contact our technical team.

Terms and conditions

- Guarantee only valid for products bought direct from Abcam or one of our authorized distributors