

Product datasheet

Anti-Ube1L antibody [EPR4270] ab108929

Recombinant RabMAb

4 Images

Overview

Product name	Anti-Ube1L antibody [EPR4270]
Description	Rabbit monoclonal [EPR4270] to Ube1L
Host species	Rabbit
Tested applications	Suitable for: WB, ICC/IF Unsuitable for: IHC-P
Species reactivity	Reacts with: Human
Immunogen	Synthetic peptide. This information is proprietary to Abcam and/or its suppliers.
Positive control	WB: HepG2, HL60, HeLa, Jurkat, and human fetal liver cell lysate. GST tagged Recombinant human UBA7(Ube1L) protein. ICC/IF: HeLa cells.
General notes	<p>This product is a recombinant monoclonal antibody, which offers several advantages including:</p> <ul style="list-style-type: none"> - High batch-to-batch consistency and reproducibility - Improved sensitivity and specificity - Long-term security of supply - Animal-free production <p>For more information see here.</p> <p>Our RabMAb[®] technology is a patented hybridoma-based technology for making rabbit monoclonal antibodies. For details on our patents, please refer to RabMAb[®] patents.</p> <p>Mouse, Rat: We have preliminary internal testing data to indicate this antibody may not react with these species. Please contact us for more information.</p>

Properties

Form	Liquid
Storage instructions	Shipped at 4°C. Store at -20°C. Stable for 12 months at -20°C.
Storage buffer	<p>pH: 7.20</p> <p>Preservative: 0.05% Sodium azide</p> <p>Constituents: 0.1% BSA, 40% Glycerol (glycerin, glycerine), 9.85% Tris glycine, 50% Tissue culture supernatant</p>
Purity	Tissue culture supernatant

Clonality	Monoclonal
Clone number	EPR4270
Isotype	IgG

Applications

The Abpromise guarantee Our **Abpromise guarantee** covers the use of ab108929 in the following tested applications. The application notes include recommended starting dilutions; optimal dilutions/concentrations should be determined by the end user.

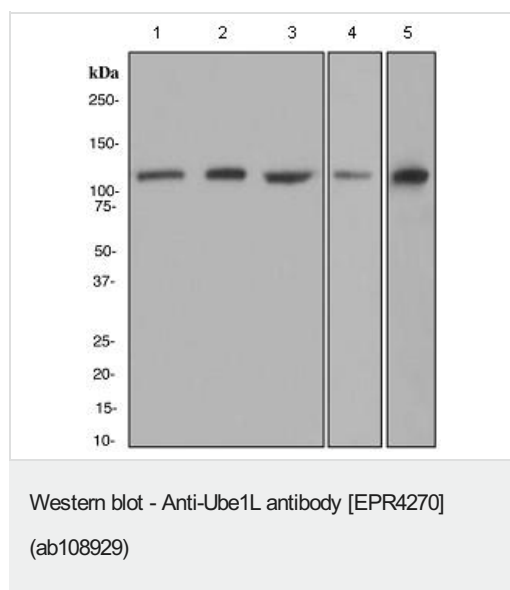
Application	Abreviews	Notes
WB		1/1000 - 1/10000. Detects a band of approximately 112 kDa (predicted molecular weight: 112 kDa).
ICC/IF		1/100 - 1/250.

Application notes Is unsuitable for IHC-P.

Target

Function	Activates ubiquitin by first adenylating with ATP its C-terminal glycine residue and thereafter linking this residue to the side chain of a cysteine residue in E1, yielding an ubiquitin-E1 thioester and free AMP.
Tissue specificity	Expressed in a variety of normal and tumor cell types, but is reduced in lung cancer cell lines.
Pathway	Protein modification; protein ubiquitination.
Sequence similarities	Belongs to the ubiquitin-activating E1 family.

Images



All lanes : Anti-Ube1L antibody [EPR4270] (ab108929) at 1/1000 dilution

Lane 1 : HepG2 cell lysate

Lane 2 : HL60 cell lysate

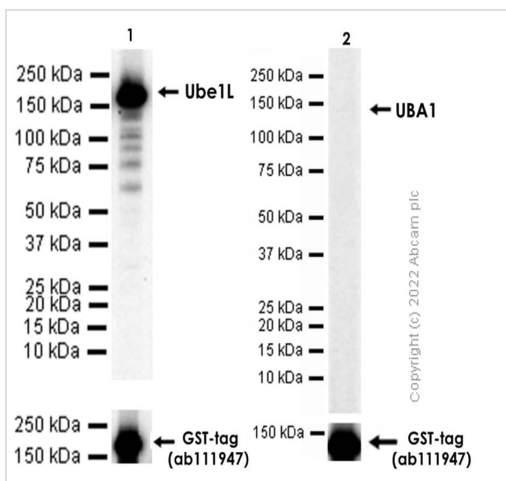
Lane 3 : HeLa cell lysate

Lane 4 : Jurkat cell lysate

Lane 5 : Fetal liver lysate

Lysates/proteins at 10 µg per lane.

Predicted band size: 112 kDa



Western blot - Anti-Ube1L antibody [EPR4270] (ab108929)

All lanes : Anti-Ube1L antibody [EPR4270] (ab108929) at 1/1000 dilution

Lane 1 : GST tagged Recombinant human UBA7(Ube1L) protein (Full length, 166 KDa)

Lane 2 : GST tagged Recombinant human UBA1 protein (Full length, 146 KDa)

Secondary

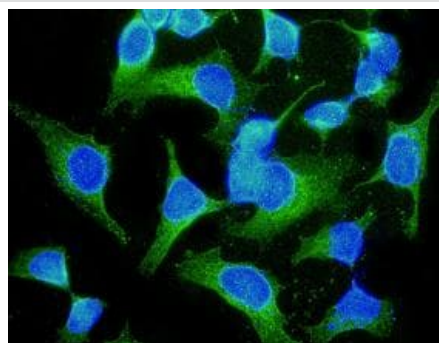
All lanes : Goat Anti-Rabbit IgG H&L (HRP) ([ab97051](#)) at 1/20000 dilution

Predicted band size: 112 kDa

Observed band size: 146,166 kDa

Exposure time: 180 seconds

Blocking/Diluting buffer and concentration: 5% NFDM/TBST



Immunocytochemistry/ Immunofluorescence - Anti-Ube1L antibody [EPR4270] (ab108929)

Immunofluorescent staining of HeLa cells using ab108929 at a dilution of 1/100.

Why choose a recombinant antibody?



Research with confidence
Consistent and reproducible results



Long-term and scalable supply
Recombinant technology



Success from the first experiment
Confirmed specificity



Ethical standards compliant
Animal-free production

Anti-Ube1L antibody [EPR4270] (ab108929)

Please note: All products are "FOR RESEARCH USE ONLY. NOT FOR USE IN DIAGNOSTIC PROCEDURES"

Our Abpromise to you: Quality guaranteed and expert technical support

- Replacement or refund for products not performing as stated on the datasheet
- Valid for 12 months from date of delivery
- Response to your inquiry within 24 hours
- We provide support in Chinese, English, French, German, Japanese and Spanish
- Extensive multi-media technical resources to help you
- We investigate all quality concerns to ensure our products perform to the highest standards

If the product does not perform as described on this datasheet, we will offer a refund or replacement. For full details of the Abpromise, please visit <https://www.abcam.com/abpromise> or contact our technical team.

Terms and conditions

- Guarantee only valid for products bought direct from Abcam or one of our authorized distributors