




Product datasheet

Anti-UBE2C antibody [1F5D3] ab201979

[3 References](#) [4 Images](#)

Overview

Product name	Anti-UBE2C antibody [1F5D3]
Description	Mouse monoclonal [1F5D3] to UBE2C
Host species	Mouse
Tested applications	Suitable for: IHC-P, WB
Species reactivity	Reacts with: Human, Recombinant fragment Predicted to work with: Mouse, Cow 
Immunogen	Recombinant full length protein corresponding to Human UBE2C aa 1 to the C-terminus. Database link: O00762 <div>  Run BLAST with  Run BLAST with </div>
Positive control	Human liver cancer tissue and esophageal cancer tissue. UBE2C transfected HEK293 cell lysate. Recombinant human UBE2C.
General notes	<p>The Life Science industry has been in the grips of a reproducibility crisis for a number of years. Abcam is leading the way in addressing this with our range of recombinant monoclonal antibodies and knockout edited cell lines for gold-standard validation. Please check that this product meets your needs before purchasing.</p> <p>If you have any questions, special requirements or concerns, please send us an inquiry and/or contact our Support team ahead of purchase. Recommended alternatives for this product can be found below, along with publications, customer reviews and Q&As</p>

Properties

Form	Liquid
Storage instructions	Shipped at 4°C. Store at +4°C short term (1-2 weeks). Upon delivery aliquot. Store at -20°C long term. Avoid freeze / thaw cycle.
Storage buffer	Preservative: 0.05% Sodium azide Constituent: 99% PBS
Purity	Protein G purified
Purification notes	Purified from tissue culture supernatant.
Clonality	Monoclonal
Clone number	1F5D3

Isotype

IgG2a

Applications

The Abpromise guarantee

Our **Abpromise guarantee** covers the use of ab201979 in the following tested applications.

The application notes include recommended starting dilutions; optimal dilutions/concentrations should be determined by the end user.

Application	Abreviews	Notes
IHC-P		1/200 - 1/1000.
WB		1/500 - 1/2000. Predicted molecular weight: 20 kDa.

Target

Function

Accepts ubiquitin from the E1 complex and catalyzes its covalent attachment to other proteins. In vitro catalyzes 'Lys-11'- and 'Lys-48'-linked polyubiquitination. Acts as an essential factor of the anaphase promoting complex/cyclosome (APC/C), a cell cycle-regulated ubiquitin ligase that controls progression through mitosis. Acts by initiating 'Lys-11'-linked polyubiquitin chains on APC/C substrates, leading to the degradation of APC/C substrates by the proteasome and promoting mitotic exit.

Pathway

Protein modification; protein ubiquitination.

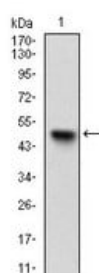
Sequence similarities

Belongs to the ubiquitin-conjugating enzyme family.

Post-translational modifications

Autoubiquitinated by the APC/C complex, leading to its degradation by the proteasome. Its degradation plays a central role in APC/C regulation, allowing cyclin-A accumulation before S phase entry. APC/C substrates inhibit the autoubiquitination of UBE2C/UBCH10 but not its E2 function, hence APC/C remaining active until its substrates have been destroyed.

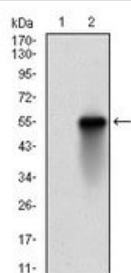
Images



Anti-UBE2C antibody [1F5D3] (ab201979) at 1/500 dilution + recombinant UBE2C protein

Predicted band size: 20 kDa

Western blot - Anti-UBE2C antibody [1F5D3]
(ab201979)



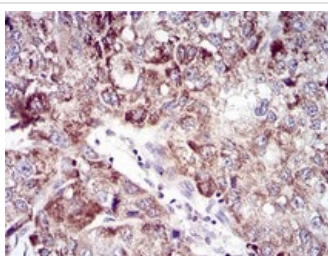
Western blot - Anti-UBE2C antibody [1F5D3]
(ab201979)

All lanes : Anti-UBE2C antibody [1F5D3] (ab201979) at 1/500 dilution

Lane 1 : Non-transfected HEK293 cell lysate

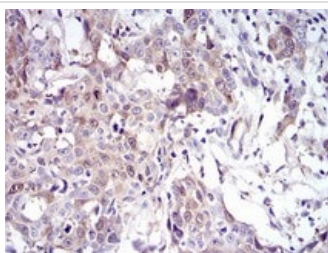
Lane 2 : UBE2C transfected HEK293 cell lysate

Predicted band size: 20 kDa



Immunohistochemistry (Formalin/PFA-fixed paraffin-embedded sections) - Anti-UBE2C antibody [1F5D3]
(ab201979)

Immunohistochemical analysis of paraffin-embedded human liver cancer tissues labeling UBE2C using ab201979 at 1/200 dilution followed by DAB staining.



Immunohistochemistry (Formalin/PFA-fixed paraffin-embedded sections) - Anti-UBE2C antibody [1F5D3]
(ab201979)

Immunohistochemical analysis of paraffin-embedded human esophageal cancer tissues labeling UBE2C using ab201979 at 1/200 dilution followed by DAB staining.

Please note: All products are "FOR RESEARCH USE ONLY. NOT FOR USE IN DIAGNOSTIC PROCEDURES"

Our Abpromise to you: Quality guaranteed and expert technical support

- Replacement or refund for products not performing as stated on the datasheet
- Valid for 12 months from date of delivery
- Response to your inquiry within 24 hours

- We provide support in Chinese, English, French, German, Japanese and Spanish
- Extensive multi-media technical resources to help you
- We investigate all quality concerns to ensure our products perform to the highest standards

If the product does not perform as described on this datasheet, we will offer a refund or replacement. For full details of the Abpromise, please visit <https://www.abcam.com/abpromise> or contact our technical team.

Terms and conditions

- Guarantee only valid for products bought direct from Abcam or one of our authorized distributors