

Product datasheet

Anti-Ube2G2 antibody [EPR9248(2)] ab174296

Recombinant RabMAb

[3 References](#) [4 Images](#)

Overview

Product name	Anti-Ube2G2 antibody [EPR9248(2)]
Description	Rabbit monoclonal [EPR9248(2)] to Ube2G2
Host species	Rabbit
Tested applications	Suitable for: ICC/IF, WB, IP Unsuitable for: Flow Cyt or IHC-P
Species reactivity	Reacts with: Mouse, Rat, Human
Immunogen	Synthetic peptide within Human Ube2G2 aa 1-100. The exact sequence is proprietary. Database link: P60604
Positive control	Mouse testis, rat testis, Jurkat, HeLa and K562 cell lysates. HeLa cells.
General notes	This product is a recombinant monoclonal antibody, which offers several advantages including: <ul style="list-style-type: none">- High batch-to-batch consistency and reproducibility- Improved sensitivity and specificity- Long-term security of supply- Animal-free production For more information see here . Our RabMAb [®] technology is a patented hybridoma-based technology for making rabbit monoclonal antibodies. For details on our patents, please refer to RabMAb[®] patents .

Properties

Form	Liquid
Storage instructions	Shipped at 4°C. Store at +4°C short term (1-2 weeks). Upon delivery aliquot. Store at -20°C long term. Avoid freeze / thaw cycle.
Storage buffer	pH: 7.20 Preservative: 0.01% Sodium azide Constituents: 9% PBS, 40% Glycerol (glycerin, glycerine), 0.05% BSA, 50% Tissue culture supernatant
Purity	Tissue culture supernatant
Clonality	Monoclonal
Clone number	EPR9248(2)

Isotype

IgG

Applications

The Abpromise guarantee

Our **Abpromise guarantee** covers the use of ab174296 in the following tested applications.

The application notes include recommended starting dilutions; optimal dilutions/concentrations should be determined by the end user.

Application	Abreviews	Notes
ICC/IF		1/100 - 1/250.
WB		1/1000 - 1/5000. Predicted molecular weight: 19 kDa.
IP		1/10 - 1/100.

Application notes

Is unsuitable for Flow Cyt or IHC-P.

Target

Function

Accepts ubiquitin from the E1 complex and catalyzes its covalent attachment to other proteins. In vitro catalyzes 'Lys-48'-linked polyubiquitination. Involved in endoplasmic reticulum-associated degradation (ERAD).

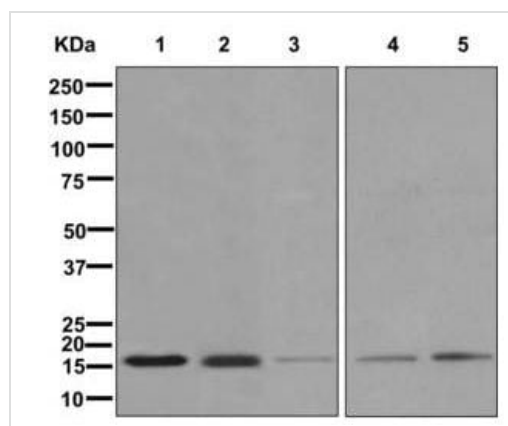
Pathway

Protein modification; protein ubiquitination.

Sequence similarities

Belongs to the ubiquitin-conjugating enzyme family.

Images



Western blot - Anti-Ube2G2 antibody [EPR9248(2)]
(ab174296)

All lanes : Anti-Ube2G2 antibody [EPR9248(2)] (ab174296) at 1/1000 dilution

Lane 1 : Mouse testis tissue lysate

Lane 2 : Rat testis tissue lysate

Lane 3 : Jurkat cell lysate

Lane 4 : HeLa cell lysate

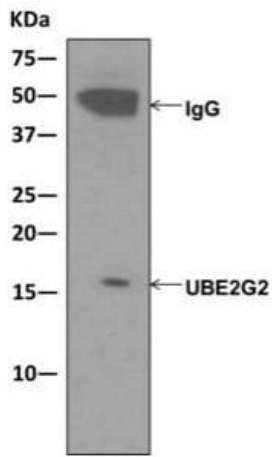
Lane 5 : K562 cell lysate

Lysates/proteins at 10 µg per lane.

Secondary

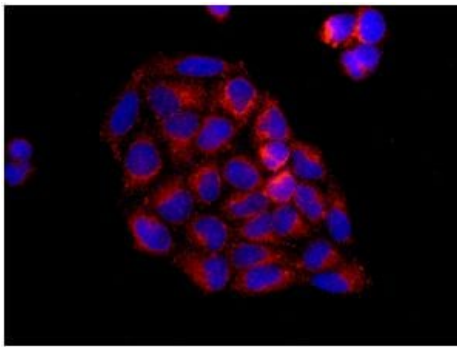
All lanes : Goat anti-rabbit HRP at 1/2000 dilution

Predicted band size: 19 kDa



Immunoprecipitation - Anti-Ube2G2 antibody
[EPR9248(2)] (ab174296)

Western blot analysis on immunoprecipitation pellet from K562 cell lysate immunoprecipitated using ab174296 at 1/10 dilution. Detection utilized HRP-conjugated anti-rabbit IgG which preferentially detects the non-reduced form of rabbit IgG.



Immunocytochemistry/ Immunofluorescence - Anti-Ube2G2 antibody [EPR9248(2)] (ab174296)

Immunofluorescent analysis of HeLa cells labeling Ube2G2 with ab174296 at 1/100 dilution (red). DAPI nuclear staining (blue).

Why choose a recombinant antibody?

- 

Research with confidence
Consistent and reproducible results
- 

Long-term and scalable supply
Recombinant technology
- 

Success from the first experiment
Confirmed specificity
- 

Ethical standards compliant
Animal-free production

Anti-Ube2G2 antibody [EPR9248(2)] (ab174296)

Please note: All products are "FOR RESEARCH USE ONLY. NOT FOR USE IN DIAGNOSTIC PROCEDURES"

Our Abpromise to you: Quality guaranteed and expert technical support

- Replacement or refund for products not performing as stated on the datasheet
- Valid for 12 months from date of delivery
- Response to your inquiry within 24 hours

- We provide support in Chinese, English, French, German, Japanese and Spanish
- Extensive multi-media technical resources to help you
- We investigate all quality concerns to ensure our products perform to the highest standards

If the product does not perform as described on this datasheet, we will offer a refund or replacement. For full details of the Abpromise, please visit <https://www.abcam.com/abpromise> or contact our technical team.

Terms and conditions

- Guarantee only valid for products bought direct from Abcam or one of our authorized distributors