




Product datasheet

Anti-UBE2I / UBC9 antibody ab21193

★★★★★ [2 Abreviews](#) [18 References](#) [3 Images](#)

Overview

Product name	Anti-UBE2I / UBC9 antibody
Description	Goat polyclonal to UBE2I / UBC9
Host species	Goat
Tested applications	Suitable for: IHC-P, WB
Species reactivity	Reacts with: Rat, Human Predicted to work with: Chicken, Hamster, Dog, Xenopus laevis 
Immunogen	Synthetic peptide: SGIALSRLAQERK , corresponding to N terminal amino acids 2-14 of Human Ube2I.  Run BLAST with  Run BLAST with
General notes	Product is very sensitive to freeze/thawing therefore this should be avoided. Store at 4C for short term use and -20C for long term storage in small aliquots. The Life Science industry has been in the grips of a reproducibility crisis for a number of years. Abcam is leading the way in addressing this with our range of recombinant monoclonal antibodies and knockout edited cell lines for gold-standard validation. Please check that this product meets your needs before purchasing. If you have any questions, special requirements or concerns, please send us an inquiry and/or contact our Support team ahead of purchase. Recommended alternatives for this product can be found below, along with publications, customer reviews and Q&As

Properties

Form	Liquid
Storage instructions	Shipped at 4°C. Upon delivery aliquot and store at -20°C or -80°C. Avoid repeated freeze / thaw cycles.
Storage buffer	pH: 7.30 Preservative: 0.02% Sodium azide Constituents: Tris buffered saline, 0.5% BSA
Purity	Immunogen affinity purified
Clonality	Polyclonal
Isotype	IgG

Applications

The Abpromise guarantee

Our **Abpromise guarantee** covers the use of ab21193 in the following tested applications.

The application notes include recommended starting dilutions; optimal dilutions/concentrations should be determined by the end user.

Application	Abreviews	Notes
IHC-P		Use at an assay dependent concentration.
WB	★★★★★ (1)	Use a concentration of 0.1 - 0.3 µg/ml. Detects a band of approximately 17 kDa (predicted molecular weight: 18 kDa). A 1 hour primary incubation is recommended for this product. Transfer onto PVDF membrane and block in 3 % milk. Incubate primary antibody with membrane at room temperature.

Target

Function

Accepts the ubiquitin-like proteins SUMO1, SUMO2, SUMO3 and SUMO4 from the UBLE1A-UBLE1B E1 complex and catalyzes their covalent attachment to other proteins with the help of an E3 ligase such as RANBP2 or CBX4. Necessary for sumoylation of FOXL2 and KAT5. Essential for nuclear architecture and chromosome segregation.

Tissue specificity

Expressed in heart, skeletal muscle, pancreas, kidney, liver, lung, placenta and brain. Also expressed in testis and thymus.

Pathway

Protein modification; protein sumoylation.

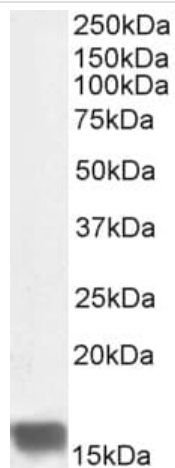
Sequence similarities

Belongs to the ubiquitin-conjugating enzyme family.

Cellular localization

Nucleus. Cytoplasm. Mainly nuclear. In spermatocytes, localizes in synaptonemal complexes. Recruited by BCL11A into the nuclear body.

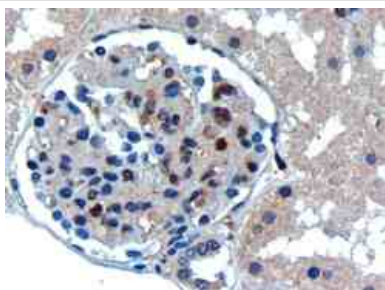
Images



Western blot - Anti-UBE2I / UBC9 antibody
(ab21193)

Anti-UBE2I / UBC9 antibody (ab21193) at 0.3 µg/ml + Rat ovary lysate at 35 µg

Predicted band size: 18 kDa



Immunohistochemistry (Formalin/PFA-fixed paraffin-embedded sections) - Anti-UBE2I / UBC9 antibody
(ab21193)

Ab21193 (0.3ug/ml) staining human UBE2I in human kidney by immunohistochemistry using paraffin embedded tissue.

Microwaved antigen retrieval with Tris/EDTA buffer pH9, HRP-staining.



Western blot - Anti-UBE2I / UBC9 antibody
(ab21193)

Anti-UBE2I / UBC9 antibody (ab21193) at 0.1 µg/ml + Human kidney lysate at 35 µg

Predicted band size: 18 kDa

Please note: All products are "FOR RESEARCH USE ONLY. NOT FOR USE IN DIAGNOSTIC PROCEDURES"

Our Abpromise to you: Quality guaranteed and expert technical support

- Replacement or refund for products not performing as stated on the datasheet
- Valid for 12 months from date of delivery
- Response to your inquiry within 24 hours

- We provide support in Chinese, English, French, German, Japanese and Spanish
- Extensive multi-media technical resources to help you
- We investigate all quality concerns to ensure our products perform to the highest standards

If the product does not perform as described on this datasheet, we will offer a refund or replacement. For full details of the Abpromise, please visit <https://www.abcam.com/abpromise> or contact our technical team.

Terms and conditions

- Guarantee only valid for products bought direct from Abcam or one of our authorized distributors