




Product datasheet

Anti-UBE2Z antibody ab229877

3 Images

Overview

Product name	Anti-UBE2Z antibody
Description	Rabbit polyclonal to UBE2Z
Host species	Rabbit
Tested applications	Suitable for: WB, IHC-P
Species reactivity	Reacts with: Human Predicted to work with: Mouse, Rat 
Immunogen	Recombinant fragment corresponding to Human UBE2Z aa 100 to the C-terminus. Database link: Q9H832  Run BLAST with  Run BLAST with
Positive control	WB: MCF7, HepG2 and HeLa whole cell lysates. IHC-P: Human testis and brain tissues.
General notes	<p>The Life Science industry has been in the grips of a reproducibility crisis for a number of years. Abcam is leading the way in addressing this with our range of recombinant monoclonal antibodies and knockout edited cell lines for gold-standard validation. Please check that this product meets your needs before purchasing.</p> <p>If you have any questions, special requirements or concerns, please send us an inquiry and/or contact our Support team ahead of purchase. Recommended alternatives for this product can be found below, along with publications, customer reviews and Q&As</p>

Properties

Form	Liquid
Storage instructions	Shipped at 4°C. Store at +4°C short term (1-2 weeks). Upon delivery aliquot. Store at -20°C long term. Avoid freeze / thaw cycle.
Storage buffer	pH: 7.30 Preservative: 0.02% Sodium azide Constituents: PBS, 50% Glycerol (glycerin, glycerine)
Purity	Immunogen affinity purified
Clonality	Polyclonal
Isotype	IgG

Applications

The Abpromise guarantee

Our **Abpromise guarantee** covers the use of ab229877 in the following tested applications.

The application notes include recommended starting dilutions; optimal dilutions/concentrations should be determined by the end user.

Application	Abreviews	Notes
WB		1/1000 - 1/5000. Detects a band of approximately 38 kDa (predicted molecular weight: 39 kDa).
IHC-P		1/20 - 1/200.

Target

Function

Catalyzes the covalent attachment of ubiquitin to other proteins (By similarity). Specific substrate for UBE1L2, not charged with ubiquitin by UBE1. May be involved in apoptosis regulation.

Tissue specificity

Widely expressed. Highly in placenta, pancreas, spleen and testis.

Pathway

Protein modification; protein ubiquitination.

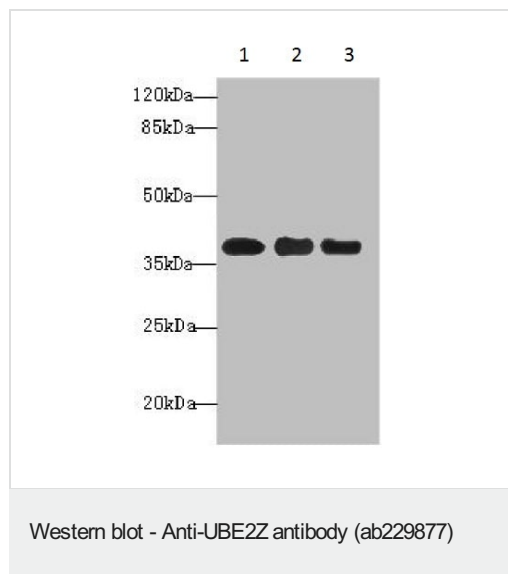
Sequence similarities

Belongs to the ubiquitin-conjugating enzyme family.

Cellular localization

Cytoplasm. Nucleus.

Images



All lanes : Anti-UBE2Z antibody (ab229877) at 1/1000 dilution

Lane 1 : MCF7 (human breast adenocarcinoma cell line) whole cell lysate

Lane 2 : HepG2 (human liver hepatocellular carcinoma cell line) whole cell lysate

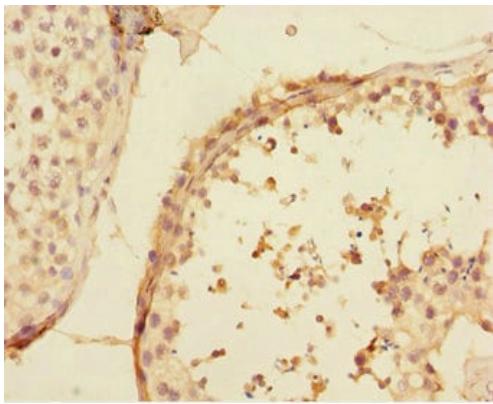
Lane 3 : HeLa (human epithelial cell line from cervix adenocarcinoma) whole cell lysate

Secondary

All lanes : Goat polyclonal to Rabbit IgG at 1/10000 dilution

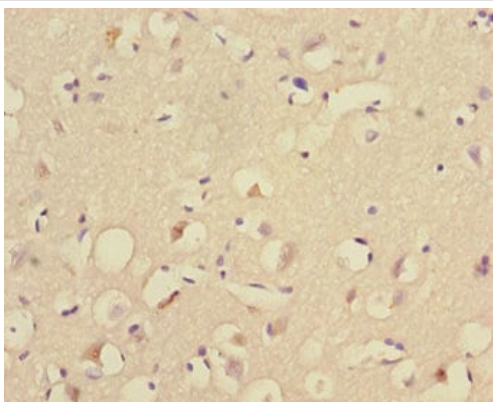
Predicted band size: 39 kDa

Observed band size: 38 kDa



Paraffin-embedded human testis tissue stained for UBE2Z using ab229877 at 1/100 dilution in immunohistochemical analysis.

Immunohistochemistry (Formalin/PFA-fixed paraffin-embedded sections) - Anti-UBE2Z antibody (ab229877)



Paraffin-embedded human brain tissue stained for UBE2Z using ab229877 at 1/100 dilution in immunohistochemical analysis.

Immunohistochemistry (Formalin/PFA-fixed paraffin-embedded sections) - Anti-UBE2Z antibody (ab229877)

Please note: All products are "FOR RESEARCH USE ONLY. NOT FOR USE IN DIAGNOSTIC PROCEDURES"

Our Abpromise to you: Quality guaranteed and expert technical support

- Replacement or refund for products not performing as stated on the datasheet
- Valid for 12 months from date of delivery
- Response to your inquiry within 24 hours
- We provide support in Chinese, English, French, German, Japanese and Spanish
- Extensive multi-media technical resources to help you

- We investigate all quality concerns to ensure our products perform to the highest standards

If the product does not perform as described on this datasheet, we will offer a refund or replacement. For full details of the Abpromise, please visit <https://www.abcam.com/abpromise> or contact our technical team.

Terms and conditions

- Guarantee only valid for products bought direct from Abcam or one of our authorized distributors