


## Product datasheet

### Anti-UBF1 antibody [EP2741Y] ab75781

Recombinant RabMAb

[2 References](#) [4 Images](#)

#### Overview

<b>Product name</b>	Anti-UBF1 antibody [EP2741Y]
<b>Description</b>	Rabbit monoclonal [EP2741Y] to UBF1
<b>Host species</b>	Rabbit
<b>Tested applications</b>	<b>Suitable for:</b> Flow Cyt (Intra), WB, IHC-P <b>Unsuitable for:</b> IP
<b>Species reactivity</b>	<b>Reacts with:</b> Human <b>Predicted to work with:</b> Mouse 
<b>Immunogen</b>	Synthetic peptide. This information is proprietary to Abcam and/or its suppliers.
<b>Positive control</b>	HeLa and A431 cell lysates, human breast carcinoma
<b>General notes</b>	<p>This product is a recombinant monoclonal antibody, which offers several advantages including:</p> <ul style="list-style-type: none"> <li>- High batch-to-batch consistency and reproducibility</li> <li>- Improved sensitivity and specificity</li> <li>- Long-term security of supply</li> <li>- Animal-free production</li> </ul> <p>For more information <a href="#">see here</a>.</p> <p>Our RabMAb<sup>®</sup> technology is a patented hybridoma-based technology for making rabbit monoclonal antibodies. For details on our patents, please refer to <a href="#">RabMAb<sup>®</sup> patents</a>.</p> <p>Rat: We have preliminary internal testing data to indicate this antibody may not react with this species. Please contact us for more information.</p>

#### Properties

<b>Form</b>	Liquid
<b>Storage instructions</b>	Shipped at 4°C. Upon delivery aliquot and store at -20°C. Avoid freeze / thaw cycles.
<b>Storage buffer</b>	pH: 7.20 Preservative: 0.05% Sodium azide Constituents: 0.1% BSA, 40% Glycerol (glycerin, glycerine), 9.85% Tris glycine, 50% Tissue culture supernatant
<b>Purity</b>	Protein A purified

<b>Clonality</b>	Monoclonal
<b>Clone number</b>	EP2741Y
<b>Isotype</b>	IgG

## Applications

**The Abpromise guarantee** Our **Abpromise guarantee** covers the use of ab75781 in the following tested applications. The application notes include recommended starting dilutions; optimal dilutions/concentrations should be determined by the end user.

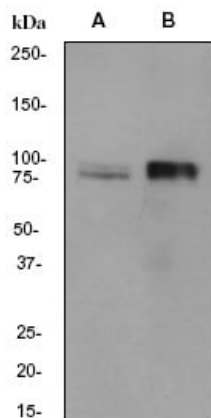
Application	Abreviews	Notes
<b>Flow Cyt (Intra)</b>		1/30 - 1/50. <b>ab172730</b> - Rabbit monoclonal IgG, is suitable for use as an isotype control with this antibody.
<b>WB</b>		1/500. Detects a band of approximately 89 kDa (predicted molecular weight: 89 kDa).
<b>IHC-P</b>		1/100 - 1/250. Perform heat mediated antigen retrieval with citrate buffer pH 6 before commencing with IHC staining protocol.

**Application notes** Is unsuitable for IP.

## Target

<b>Function</b>	Recognizes the ribosomal RNA gene promoter and activates transcription mediated by RNA polymerase I through cooperative interactions with the transcription factor SL1/TIF-IB complex. It binds specifically to the upstream control element.
<b>Sequence similarities</b>	Contains 6 HMG box DNA-binding domains.
<b>Post-translational modifications</b>	Phosphorylated and activated by PIK3CA.
<b>Cellular localization</b>	Nucleus > nucleolus.

## Images



Western blot - Anti-UBF1 antibody [EP2741Y] (ab75781)

**All lanes :** Anti-UBF1 antibody [EP2741Y] (ab75781) at 1/500 dilution

**Lane 1 :** (A) HeLa cell lysate

**Lane 2 :** (B) A431 cell lysate

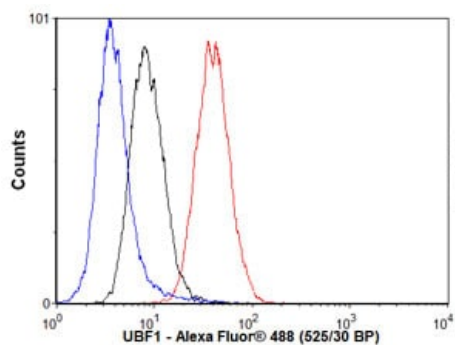
Lysates/proteins at 10 µg per lane.

## Secondary

**All lanes :** HRP labelled goat anti-rabbit at 1/2000 dilution

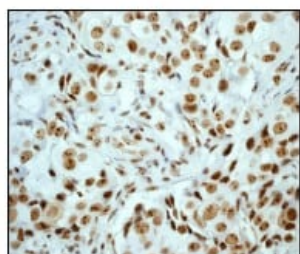
**Predicted band size:** 89 kDa

**Observed band size:** 89,89 kDa



Flow Cytometry (Intracellular) - Anti-UBF1 antibody [EP2741Y] (ab75781)

Overlay histogram showing A431 cells stained with ab75781 (red line). The cells were fixed with 80% methanol (5 min) and then permeabilized with 0.1% PBS-Tween for 20 min. The cells were then incubated in 1x PBS / 10% normal goat serum / 0.3M glycine to block non-specific protein-protein interactions followed by the antibody (ab75781, 1/50 dilution) for 30 min at 22°C. The secondary antibody used was Alexa Fluor® 488 goat anti-rabbit IgG (H&L) (**ab150077**) at 1/2000 dilution for 30 min at 22°C. Isotype control antibody (black line) was rabbit IgG (monoclonal) (1µg/1x10<sup>6</sup> cells) used under the same conditions. Unlabelled sample (blue line) was also used as a control. Acquisition of >5,000 events were collected using a 20mW Argon ion laser (488nm) and 525/30 bandpass filter.



Immunohistochemistry (Formalin/PFA-fixed paraffin-embedded sections) - Anti-UBF1 antibody [EP2741Y] (ab75781)

Immunohistochemical analysis of paraffin-embedded human breast carcinoma using ab75781 at 1/100-1/250 dilution.

Perform heat mediated antigen retrieval with citrate buffer pH 6 before commencing with IHC staining protocol.

### Why choose a recombinant antibody?



**Research with confidence**  
Consistent and reproducible results



**Long-term and scalable supply**  
Recombinant technology



**Success from the first experiment**  
Confirmed specificity



**Ethical standards compliant**  
Animal-free production

Anti-UBF1 antibody [EP2741Y] (ab75781)

**Please note:** All products are "FOR RESEARCH USE ONLY. NOT FOR USE IN DIAGNOSTIC PROCEDURES"

### Our Abpromise to you: Quality guaranteed and expert technical support

---

- Replacement or refund for products not performing as stated on the datasheet
- Valid for 12 months from date of delivery
- Response to your inquiry within 24 hours
- We provide support in Chinese, English, French, German, Japanese and Spanish
- Extensive multi-media technical resources to help you
- We investigate all quality concerns to ensure our products perform to the highest standards

If the product does not perform as described on this datasheet, we will offer a refund or replacement. For full details of the Abpromise, please visit <https://www.abcam.com/abpromise> or contact our technical team.

### Terms and conditions

---

- Guarantee only valid for products bought direct from Abcam or one of our authorized distributors