

Product datasheet

Anti-Ubiquinol-Cytochrome C Reductase Core Protein I antibody [16D10AD9AH5] ab110252

★★★★★ [1 Abreviews](#) [96 References](#) [3 Images](#)

Overview

Product name	Anti-Ubiquinol-Cytochrome C Reductase Core Protein I antibody [16D10AD9AH5]
Description	Mouse monoclonal [16D10AD9AH5] to Ubiquinol-Cytochrome C Reductase Core Protein I
Host species	Mouse
Tested applications	Suitable for: Flow Cyt, ICC/IF, WB
Species reactivity	Reacts with: Mouse, Rat, Cow, Human
Immunogen	Full length native protein (purified). This information is considered to be commercially sensitive.
Positive control	Human, Cow, Rat or Mouse heart mitochondrial lysate, HepG2 mitochondrial lysate. This antibody gave a positive result when used in the following methanol fixed cell lines: HCT116
General notes	<p>This antibody clone is manufactured by Abcam. If you require a custom buffer formulation or conjugation for your experiments, please contact orders@abcam.com.</p> <p>The Life Science industry has been in the grips of a reproducibility crisis for a number of years. Abcam is leading the way in addressing this with our range of recombinant monoclonal antibodies and knockout edited cell lines for gold-standard validation. Please check that this product meets your needs before purchasing.</p> <p>If you have any questions, special requirements or concerns, please send us an inquiry and/or contact our Support team ahead of purchase. Recommended alternatives for this product can be found below, along with publications, customer reviews and Q&As</p> <p>Product was previously marketed under the MitoSciences sub-brand.</p>

Properties

Form	Liquid
Storage instructions	Shipped at 4°C. Store at +4°C. Do Not Freeze.
Storage buffer	pH: 7.5 Preservative: 0.02% Sodium azide Constituent: HEPES buffered saline
Purity	IgG fraction
Purification notes	ab110252 is produced in vitro using hybridomas grown in serum-free medium, and then purified

	by biochemical fractionation.
Clonality	Monoclonal
Clone number	16D10AD9AH5
Isotype	IgG1
Light chain type	kappa

Applications

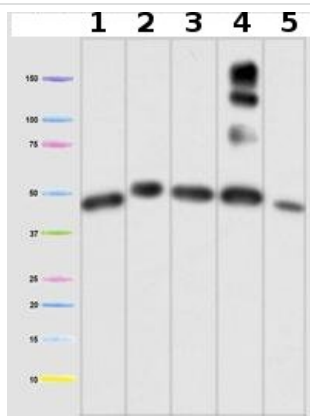
The Abpromise guarantee Our **Abpromise guarantee** covers the use of ab110252 in the following tested applications. The application notes include recommended starting dilutions; optimal dilutions/concentrations should be determined by the end user.

Application	Abreviews	Notes
Flow Cyt		Use 1µg for 10 ⁶ cells. ab170190 - Mouse monoclonal IgG1, is suitable for use as an isotype control with this antibody.
ICC/IF		1/50.
WB	★★★★★ (1)	Use a concentration of 0.5 µg/ml. Predicted molecular weight: 53 kDa.

Target

Function	This is a component of the ubiquinol-cytochrome c reductase complex (complex III or cytochrome b-c1 complex), which is part of the mitochondrial respiratory chain. This protein may mediate formation of the complex between cytochromes c and c1.
Sequence similarities	Belongs to the peptidase M16 family. UQCRC1/QCR1 subfamily.
Cellular localization	Mitochondrion inner membrane.

Images



Western blot - Anti-Ubiquinol-Cytochrome C Reductase Core Protein I antibody [16D10AD9AH5] (ab110252)

All lanes : Anti-Ubiquinol-Cytochrome C Reductase Core Protein I antibody [16D10AD9AH5] (ab110252) at 0.5 µg/ml

Lane 1 : Human heart mitochondrial lysate

Lane 2 : Cow heart mitochondrial lysate

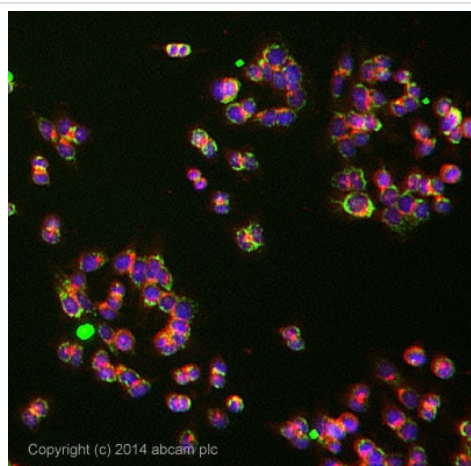
Lane 3 : Rat heart mitochondrial lysate

Lane 4 : Mouse heart mitochondrial lysate

Lane 5 : HepG2 mitochondrial lysate

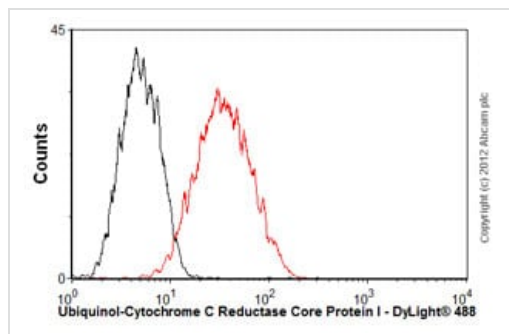
Predicted band size: 53 kDa

Extra bands in the Mouse sample (lane 4) are due to the reaction of the IgG-specific goat anti-mouse secondary antibody with residual mouse blood in the heart tissue, as it is very difficult to entirely remove the blood from these small organs.



Immunocytochemistry/ Immunofluorescence - Anti-Ubiquinol-Cytochrome C Reductase Core Protein I antibody [16D10AD9AH5] (ab110252)

ab110252 stained HCT116 cells. The cells were 100% methanol fixed for 5 minutes at room temperature and then incubated in 1%BSA / 10% normal goat serum / 0.3M glycine in 0.1% PBS-Tween for 1 hour at room temperature to permeabilise the cells and block non-specific protein-protein interactions. The cells were then incubated with the antibody (ab110252 at 1/50 dilution) overnight at +4°C. The secondary antibody (pseudo-colored green) was **ab150117** used at a 1/1000 dilution for 1 hour at room temperature. Alexa Fluor® 594 WGA was used to label plasma membranes (pseudo-colored red) at a 1/200 dilution for 1 hour at room temperature. DAPI was used to stain the cell nuclei (pseudo-colored blue) at a concentration of 1.43µM for 1 hour at room temperature.



Flow Cytometry - Anti-Ubiquinol-Cytochrome C Reductase Core Protein I antibody [16D10AD9AH5] (ab110252)

Overlay histogram showing HepG2 cells stained with ab110252 (red line). The cells were fixed with 80% methanol (5 min) and then permeabilized with 0.1% PBS-Tween for 20 min. The cells were then incubated in 1x PBS / 10% normal goat serum / 0.3M glycine to block non-specific protein-protein interactions. The cells were then incubated with the antibody (ab110252, 1µg/1x10⁶ cells) for 30 min at 22°C. The secondary antibody used was DyLight® 488 goat anti-mouse IgG (H+L) (**ab96879**) at 1/500 dilution for 30 min at 22°C. Isotype control antibody (black line) was mouse IgG1 [ICIGG1] (**ab91353**, 2µg/1x10⁶ cells) used under the same conditions. Acquisition of >5,000 events was performed.

Please note: All products are "FOR RESEARCH USE ONLY. NOT FOR USE IN DIAGNOSTIC PROCEDURES"

Our Abpromise to you: Quality guaranteed and expert technical support

- Replacement or refund for products not performing as stated on the datasheet
- Valid for 12 months from date of delivery
- Response to your inquiry within 24 hours
- We provide support in Chinese, English, French, German, Japanese and Spanish
- Extensive multi-media technical resources to help you
- We investigate all quality concerns to ensure our products perform to the highest standards

If the product does not perform as described on this datasheet, we will offer a refund or replacement. For full details of the Abpromise, please visit <https://www.abcam.com/abpromise> or contact our technical team.

Terms and conditions

- Guarantee only valid for products bought direct from Abcam or one of our authorized distributors