


Product datasheet

Anti-Ubiquinol-Cytochrome C Reductase Core Protein I antibody ab96333

★★★★★ [1 Abreviews](#) [5 References](#) [2 Images](#)

Overview

Product name	Anti-Ubiquinol-Cytochrome C Reductase Core Protein I antibody
Description	Rabbit polyclonal to Ubiquinol-Cytochrome C Reductase Core Protein I
Host species	Rabbit
Tested applications	Suitable for: WB, IHC-P
Species reactivity	Reacts with: Mouse, Human Predicted to work with: Rat, Cow, Monkey 
Immunogen	Recombinant fragment, corresponding to a region within amino acids 1-176 of Human Ubiquinol-Cytochrome C Reductase Core Protein I (NP_003356)
Positive control	HepG2 whole cell lysate (ab7900) and 293T cell lysate
General notes	<p>The Life Science industry has been in the grips of a reproducibility crisis for a number of years. Abcam is leading the way in addressing this with our range of recombinant monoclonal antibodies and knockout edited cell lines for gold-standard validation. Please check that this product meets your needs before purchasing.</p> <p>If you have any questions, special requirements or concerns, please send us an inquiry and/or contact our Support team ahead of purchase. Recommended alternatives for this product can be found below, along with publications, customer reviews and Q&As</p>

Properties

Form	Liquid
Storage instructions	Shipped at 4°C. Upon delivery aliquot and store at -20°C or -80°C. Avoid repeated freeze / thaw cycles.
Storage buffer	pH: 7.00 Preservative: 0.01% Thimerosal (merthiolate) Constituents: 79.99% PBS, 20% Glycerol (glycerin, glycerine)
Purity	Immunogen affinity purified
Clonality	Polyclonal
Isotype	IgG

Applications

The Abpromise guarantee

Our **Abpromise guarantee** covers the use of ab96333 in the following tested applications.

The application notes include recommended starting dilutions; optimal dilutions/concentrations should be determined by the end user.

Application	Abreviews	Notes
WB		1/500 - 1/3000. Predicted molecular weight: 53 kDa.
IHC-P		1/100 - 1/1000.

Target

Function

This is a component of the ubiquinol-cytochrome c reductase complex (complex III or cytochrome b-c1 complex), which is part of the mitochondrial respiratory chain. This protein may mediate formation of the complex between cytochromes c and c1.

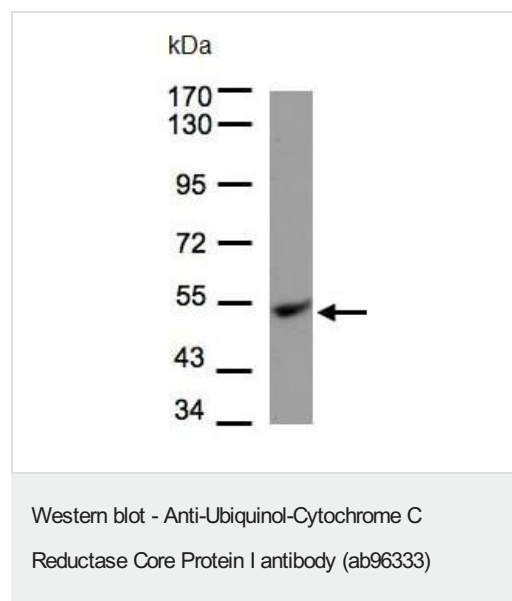
Sequence similarities

Belongs to the peptidase M16 family. UQCRC1/QCR1 subfamily.

Cellular localization

Mitochondrion inner membrane.

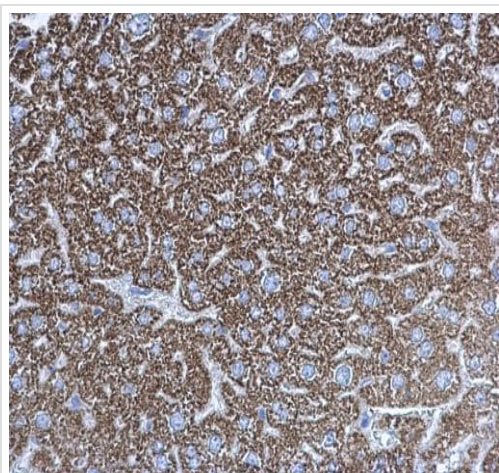
Images



Anti-Ubiquinol-Cytochrome C Reductase Core Protein I antibody (ab96333) at 1/1000 dilution + HepG2 whole cell lysate at 30 µg

Predicted band size: 53 kDa

7.5% SDS PAGE



Immunohistochemical analysis of PFA fixed, paraffin-embedded mouse liver tissue labeling Ubiquinol-Cytochrome C Reductase Core Protein 1 with ab96333 at 1/500 dilution.

Immunohistochemistry (Formalin/PFA-fixed paraffin-embedded sections) - Anti-Ubiquinol-Cytochrome C Reductase Core Protein 1 antibody (ab96333)

Please note: All products are "FOR RESEARCH USE ONLY. NOT FOR USE IN DIAGNOSTIC PROCEDURES"

Our Abpromise to you: Quality guaranteed and expert technical support

- Replacement or refund for products not performing as stated on the datasheet
- Valid for 12 months from date of delivery
- Response to your inquiry within 24 hours
- We provide support in Chinese, English, French, German, Japanese and Spanish
- Extensive multi-media technical resources to help you
- We investigate all quality concerns to ensure our products perform to the highest standards

If the product does not perform as described on this datasheet, we will offer a refund or replacement. For full details of the Abpromise, please visit <https://www.abcam.com/abpromise> or contact our technical team.

Terms and conditions

- Guarantee only valid for products bought direct from Abcam or one of our authorized distributors