

## Product datasheet

### Anti-UBLCP1 antibody [EPR11923] ab176340

Recombinant RabMAb

[1 References](#) [4 Images](#)

#### Overview

<b>Product name</b>	Anti-UBLCP1 antibody [EPR11923]
<b>Description</b>	Rabbit monoclonal [EPR11923] to UBLCP1
<b>Host species</b>	Rabbit
<b>Tested applications</b>	<b>Suitable for:</b> WB, ICC/IF, IP <b>Unsuitable for:</b> Flow Cyt or IHC-P
<b>Species reactivity</b>	<b>Reacts with:</b> Human
<b>Immunogen</b>	Synthetic peptide. This information is proprietary to Abcam and/or its suppliers.
<b>Positive control</b>	293T, HeLa, and K562 cell lysates. HeLa cells.
<b>General notes</b>	<p>This product is a recombinant monoclonal antibody, which offers several advantages including:</p> <ul style="list-style-type: none"> <li>- High batch-to-batch consistency and reproducibility</li> <li>- Improved sensitivity and specificity</li> <li>- Long-term security of supply</li> <li>- Animal-free production</li> </ul> <p>For more information <a href="#">see here</a>.</p> <p>Our RabMAb<sup>®</sup> technology is a patented hybridoma-based technology for making rabbit monoclonal antibodies. For details on our patents, please refer to <a href="#">RabMAb<sup>®</sup> patents</a>.</p> <p>Mouse, Rat: We have preliminary internal testing data to indicate this antibody may not react with these species. Please contact us for more information.</p>

#### Properties

<b>Form</b>	Liquid
<b>Storage instructions</b>	Shipped at 4°C. Store at +4°C short term (1-2 weeks). Upon delivery aliquot. Store at -20°C long term. Avoid freeze / thaw cycle.
<b>Storage buffer</b>	<p>pH: 7.20</p> <p>Preservative: 0.01% Sodium azide</p> <p>Constituents: 9% PBS, 40% Glycerol (glycerin, glycerine), 0.05% BSA, 50% Tissue culture supernatant</p>
<b>Purity</b>	Tissue culture supernatant

<b>Clonality</b>	Monoclonal
<b>Clone number</b>	EPR11923
<b>Isotype</b>	IgG

## Applications

**The Abpromise guarantee** Our **Abpromise guarantee** covers the use of ab176340 in the following tested applications. The application notes include recommended starting dilutions; optimal dilutions/concentrations should be determined by the end user.

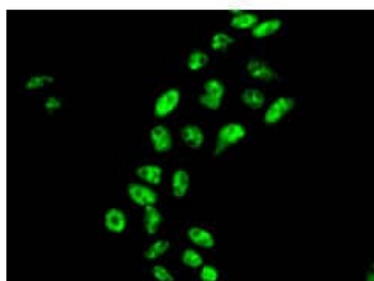
Application	Abreviews	Notes
WB		1/1000 - 1/10000. Predicted molecular weight: 37 kDa.
ICC/IF		1/50 - 1/100.
IP		1/10 - 1/100.

**Application notes** Is unsuitable for Flow Cyt or IHC-P.

## Target

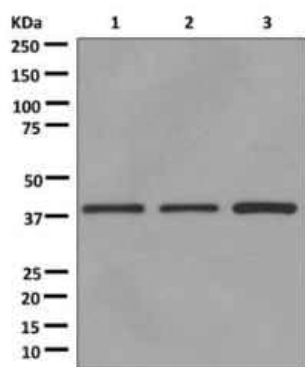
<b>Function</b>	Dephosphorylates 26S nuclear proteasomes, thereby decreasing their proteolytic activity. The dephosphorylation may prevent assembly of the core and regulatory particles (CP and RP) into mature 26S proteasome.
<b>Tissue specificity</b>	Broadly expressed, with highest levels in placenta, lung, testis and ovary. Up-regulated in tumor tissues.
<b>Sequence similarities</b>	Contains 1 FCP1 homology domain. Contains 1 ubiquitin-like domain.
<b>Domain</b>	The Ubiquitin-like domain mediates interaction with proteasomes.
<b>Cellular localization</b>	Nucleus. Colocalizes with nuclear proteasomes.

## Images



Immunofluorescence analysis of HeLa cells labeling UBLCP1 with ab176340 at 1/50 dilution.

Immunocytochemistry/ Immunofluorescence - Anti-UBLCP1 antibody [EPR11923] (ab176340)



Western blot - Anti-UBLCP1 antibody [EPR11923]  
(ab176340)

**All lanes :** Anti-UBLCP1 antibody [EPR11923] (ab176340) at  
1/1000 dilution

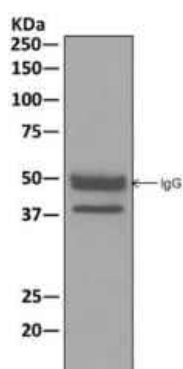
**Lane 1 :** 293T cell lysate

**Lane 2 :** HeLa cell lysate

**Lane 3 :** K562 cell lysate

Lysates/proteins at 10 µg per lane.

**Predicted band size:** 37 kDa



Immunoprecipitation - Anti-UBLCP1 antibody  
[EPR11923] (ab176340)

Western blot analysis on immunoprecipitation pellet from K562 cell  
lysate using ab176340 at 1/10 dilution.

Why choose a  
recombinant antibody?



**Research with  
confidence**  
Consistent and  
reproducible results



**Long-term and  
scalable supply**  
Recombinant  
technology



**Success from the  
first experiment**  
Confirmed  
specificity



**Ethical standards  
compliant**  
Animal-free  
production

Anti-UBLCP1 antibody [EPR11923] (ab176340)

**Please note:** All products are "FOR RESEARCH USE ONLY. NOT FOR USE IN DIAGNOSTIC PROCEDURES"

### **Our Abpromise to you: Quality guaranteed and expert technical support**

---

- Replacement or refund for products not performing as stated on the datasheet
- Valid for 12 months from date of delivery
- Response to your inquiry within 24 hours
  
- We provide support in Chinese, English, French, German, Japanese and Spanish
- Extensive multi-media technical resources to help you
- We investigate all quality concerns to ensure our products perform to the highest standards

If the product does not perform as described on this datasheet, we will offer a refund or replacement. For full details of the Abpromise, please visit <https://www.abcam.com/abpromise> or contact our technical team.

### **Terms and conditions**

---

- Guarantee only valid for products bought direct from Abcam or one of our authorized distributors