


Product datasheet

Anti-UGPase antibody [EPR10627(B)] ab154817

Recombinant RabMAb

★★★★★ [1 Abreviews](#) [4 References](#) [10 Images](#)

Overview

Product name	Anti-UGPase antibody [EPR10627(B)]
Description	Rabbit monoclonal [EPR10627(B)] to UGPase
Host species	Rabbit
Tested applications	Suitable for: WB, IHC-P, Flow Cyt (Intra) Unsuitable for: ICC/IF or IP
Species reactivity	Reacts with: Mouse, Human Predicted to work with: Rat, Pig 
Immunogen	Synthetic peptide corresponding to Human UGPase (internal sequence). Database link: Q16851
Positive control	HepG2; HeLa; NIH 3T3 cell lysates; Human fetal liver tissue lysate; Human colon adenocarcinoma; kidney and NIH 3T3 cells.
General notes	This product is a recombinant monoclonal antibody, which offers several advantages including: <ul style="list-style-type: none">- High batch-to-batch consistency and reproducibility- Improved sensitivity and specificity- Long-term security of supply- Animal-free production For more information see here . Our RabMAb [®] technology is a patented hybridoma-based technology for making rabbit monoclonal antibodies. For details on our patents, please refer to RabMAb[®] patents .

Properties

Form	Liquid
Storage instructions	Shipped at 4°C. Store at -20°C.
Storage buffer	pH: 7.2 Preservative: 0.01% Sodium azide Constituents: 9% PBS, 40% Glycerol (glycerin, glycerine), 0.05% BSA, 50% Tissue culture supernatant
Purity	Tissue culture supernatant
Clonality	Monoclonal

Clone number EPR10627(B)
Isotype IgG

Applications

The Abpromise guarantee Our **Abpromise guarantee** covers the use of ab154817 in the following tested applications.
The application notes include recommended starting dilutions; optimal dilutions/concentrations should be determined by the end user.

Application	Abreviews	Notes
WB	★★★★★ (1)	1/1000 - 1/10000. Predicted molecular weight: 57 kDa.
IHC-P		1/50 - 1/100. Perform heat mediated antigen retrieval with citrate buffer pH 6 before commencing with IHC staining protocol.
Flow Cyt (Intra)		1/10 - 1/100. ab172730 - Rabbit monoclonal IgG, is suitable for use as an isotype control with this antibody.

Application notes Is unsuitable for ICC/IF or IP.

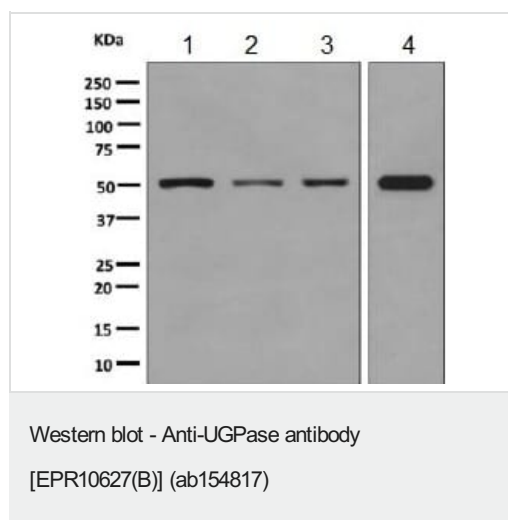
Target

Function Plays a central role as a glucosyl donor in cellular metabolic pathways.

Sequence similarities Belongs to the UDPGP type 1 family.

Cellular localization Cytoplasm.

Images



All lanes : Anti-UGPase antibody [EPR10627(B)] (ab154817) at
1/1000 dilution

Lane 1 : HepG2 cell lysate

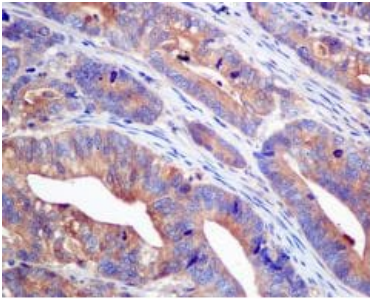
Lane 2 : HeLa cell lysate

Lane 3 : NIH 3T3 cell lysate

Lane 4 : Human fetal liver tissue lysate

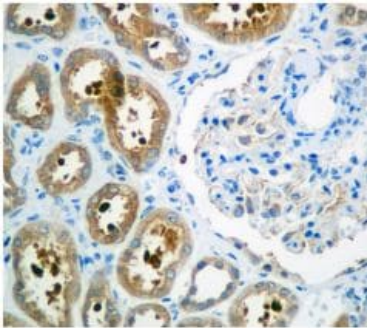
Lysates/proteins at 10 µg per lane.

Predicted band size: 57 kDa



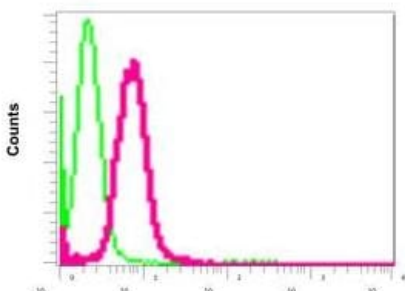
Immunohistochemistry (Formalin/PFA-fixed paraffin-embedded sections) - Anti-UGPase antibody [EPR10627(B)] (ab154817)

Immunohistochemical analysis of paraffin-embedded Human colon adenocarcinoma labeling UGPase using ab154817 at 1/50 dilution. Perform heat mediated antigen retrieval with citrate buffer pH 6 before commencing with IHC staining protocol.



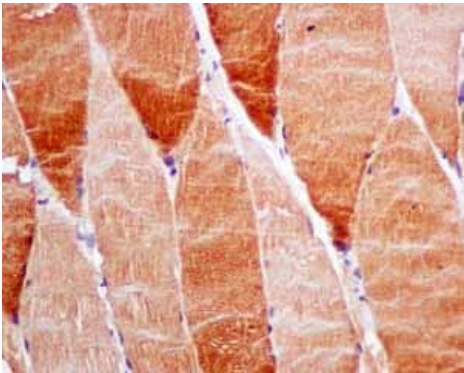
Immunohistochemistry (Formalin/PFA-fixed paraffin-embedded sections) - Anti-UGPase antibody [EPR10627(B)] (ab154817)

Immunohistochemical analysis of paraffin-embedded Human kidney labeling UGPase using ab154817 at 1/50 dilution. Perform heat mediated antigen retrieval with citrate buffer pH 6 before commencing with IHC staining protocol.



Flow Cytometry (Intracellular) - Anti-UGPase antibody [EPR10627(B)] (ab154817)

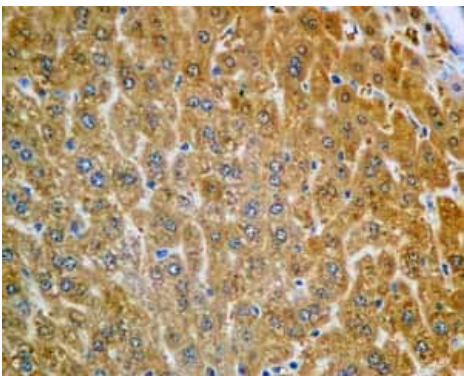
Intracellular flow cytometric analysis of permeabilized NIH 3T3 cells labeling UGPase using ab154817 (red) at 1/10 dilution or a rabbit IgG (negative) (green).



Immunohistochemistry (Formalin/PFA-fixed paraffin-embedded sections) - Anti-UGPase antibody [EPR10627(B)] (ab154817)

Immunohistochemical analysis of paraffin embedded Human skeletal muscle tissue using ab154817 showing +ve staining.

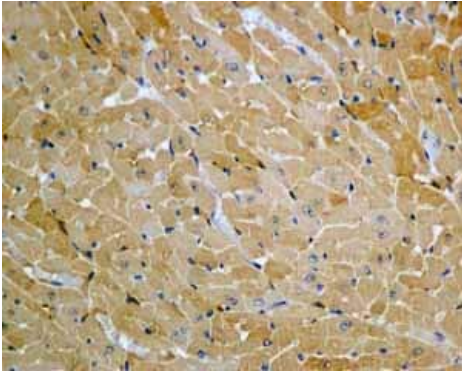
Perform heat mediated antigen retrieval with citrate buffer pH 6 before commencing with IHC staining protocol.



Immunohistochemistry (Formalin/PFA-fixed paraffin-embedded sections) - Anti-UGPase antibody [EPR10627(B)] (ab154817)

Immunohistochemical analysis of paraffin embedded Human normal liver tissue using ab154817 showing +ve staining.

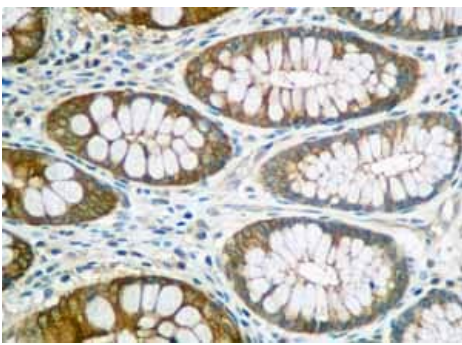
Perform heat mediated antigen retrieval with citrate buffer pH 6 before commencing with IHC staining protocol.



Immunohistochemistry (Formalin/PFA-fixed paraffin-embedded sections) - Anti-UGPase antibody [EPR10627(B)] (ab154817)

Immunohistochemical analysis of paraffin embedded Human normal heart tissue using ab154817 showing +ve staining.

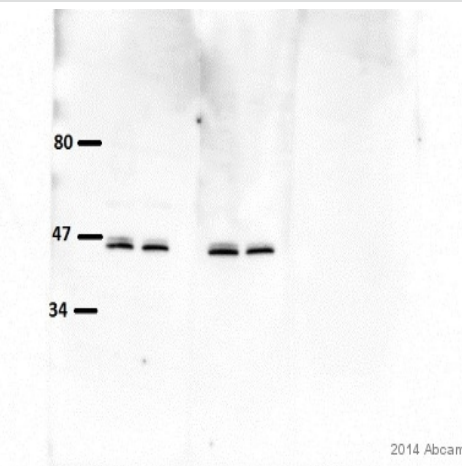
Perform heat mediated antigen retrieval with citrate buffer pH 6 before commencing with IHC staining protocol.



Immunohistochemistry (Formalin/PFA-fixed paraffin-embedded sections) - Anti-UGPase antibody [EPR10627(B)] (ab154817)

Immunohistochemical analysis of paraffin embedded Human normal colon tissue using ab154817 showing +ve staining.

Perform heat mediated antigen retrieval with citrate buffer pH 6 before commencing with IHC staining protocol.



Western blot - Anti-UGPase antibody [EPR10627(B)] (ab154817)

This image is courtesy of an Abreview submitted by Shannon Cruzen

Lanes 1-2 : Anti-UGPase antibody [EPR10627(B)] (ab154817) at 1/10000 dilution

Lanes 3-4 : Anti-UGPase antibody [EPR10627(B)] (ab154817) at 1/20000 dilution

All lanes : Pig muscle sarcoplasm tissue lysate

Lysates/proteins at 40 µg per lane.

Secondary

All lanes : HRP-conjugated goat anti-rabbit IgG (H+L) polyclonal at 1/10000 dilution

Developed using the ECL technique.


Performed under reducing conditions.

Predicted band size: 57 kDa

Observed band size: 45-47 kDa

Exposure time: 5 minutes

Why choose a recombinant antibody?



Research with confidence
Consistent and reproducible results

Long-term and scalable supply
Recombinant technology

Success from the first experiment
Confirmed specificity

Ethical standards compliant
Animal-free production

Anti-UGPase antibody [EPR10627(B)] (ab154817)

Please note: All products are "FOR RESEARCH USE ONLY. NOT FOR USE IN DIAGNOSTIC PROCEDURES"

Our Abpromise to you: Quality guaranteed and expert technical support

- Replacement or refund for products not performing as stated on the datasheet
- Valid for 12 months from date of delivery
- Response to your inquiry within 24 hours
- We provide support in Chinese, English, French, German, Japanese and Spanish
- Extensive multi-media technical resources to help you
- We investigate all quality concerns to ensure our products perform to the highest standards

If the product does not perform as described on this datasheet, we will offer a refund or replacement. For full details of the Abpromise, please visit <https://www.abcam.com/abpromise> or contact our technical team.

Terms and conditions

- Guarantee only valid for products bought direct from Abcam or one of our authorized distributors