

## Product datasheet

# Anti-UGT1A1 antibody ab237810

[1 References](#) [3 Images](#)

### Overview

---

<b>Product name</b>	Anti-UGT1A1 antibody
<b>Description</b>	Rabbit polyclonal to UGT1A1
<b>Host species</b>	Rabbit
<b>Tested applications</b>	<b>Suitable for:</b> IHC-P, WB, ICC/IF
<b>Species reactivity</b>	<b>Reacts with:</b> Mouse, Rat, Human
<b>Immunogen</b>	Recombinant fragment corresponding to Human UGT1A1 aa 350-500. Database link: <a href="#">P22309</a> <a href="#">Run BLAST with</a> <a href="#">Run BLAST with</a>
<b>Positive control</b>	WB: HepG2, SH-SY5Y and PC-3 cell lysate; Mouse and rat liver lysate. IHC-P: Human liver tissue. ICC/IF: HepG2 cells.
<b>General notes</b>	<p>The Life Science industry has been in the grips of a reproducibility crisis for a number of years. Abcam is leading the way in addressing this with our range of recombinant monoclonal antibodies and knockout edited cell lines for gold-standard validation. Please check that this product meets your needs before purchasing.</p> <p>If you have any questions, special requirements or concerns, please send us an inquiry and/or contact our Support team ahead of purchase. Recommended alternatives for this product can be found below, along with publications, customer reviews and Q&amp;As</p>

### Properties

---

<b>Form</b>	Liquid
<b>Storage instructions</b>	Shipped at 4°C. Store at +4°C short term (1-2 weeks). Upon delivery aliquot. Store at -20°C long term. Avoid freeze / thaw cycle.
<b>Storage buffer</b>	pH: 7.40 Preservative: 0.03% Proclin 300 Constituents: 50% Glycerol (glycerin, glycerine), PBS
<b>Purity</b>	Protein G purified
<b>Purification notes</b>	Purity greater than 95%.
<b>Clonality</b>	Polyclonal
<b>Isotype</b>	IgG

## Applications

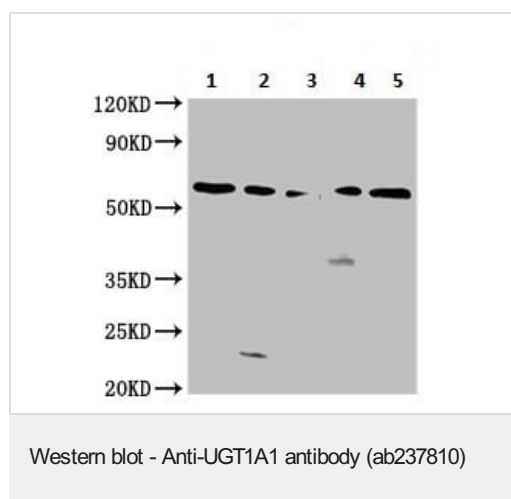
**The Abpromise guarantee** Our **Abpromise guarantee** covers the use of ab237810 in the following tested applications.

The application notes include recommended starting dilutions; optimal dilutions/concentrations should be determined by the end user.

Application	Abreviews	Notes
IHC-P		1/200 - 1/500.
WB		1/500 - 1/5000. Predicted molecular weight: 60 kDa.
ICC/IF		1/50 - 1/200.

## Target

## Images



**All lanes** : Anti-UGT1A1 antibody (ab237810) at 1/500 dilution

**Lane 1** : HepG2 (human liver hepatocellular carcinoma cell line) cell lysate

**Lane 2** : SH-SY5Y (human neuroblastoma cell line from bone marrow) cell lysate

**Lane 3** : PC-3 (human prostate adenocarcinoma cell line) cell lysate

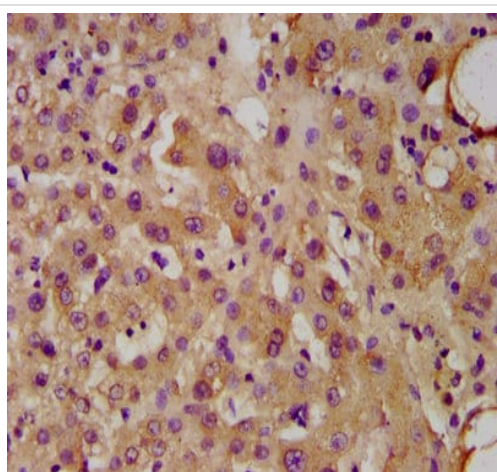
**Lane 4** : Rat liver lysate

**Lane 5** : Mouse liver lysate

### Secondary

**All lanes** : Goat polyclonal to rabbit IgG at 1/50000 dilution

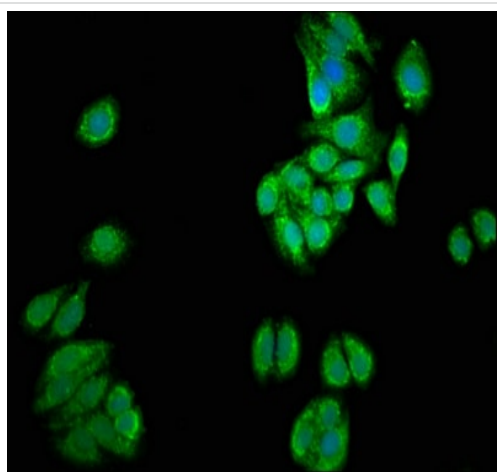
**Predicted band size:** 60 kDa



Immunohistochemistry (Formalin/PFA-fixed paraffin-embedded sections) - Anti-UGT1A1 antibody (ab237810)

Paraffin-embedded human liver tissue stained for UGT1A1 using ab237810 at 1/300 dilution in immunohistochemical analysis.

After dewaxing and hydration, antigen retrieval was mediated by high pressure in a citrate buffer (pH 6.0). Section was blocked with 10% normal goat serum for 30 minutes at room temperature. Then primary antibody (1% BSA) was incubated at 4°C overnight. The primary is detected by a biotinylated secondary antibody and visualized using an HRP conjugated SP system.



Immunocytochemistry/ Immunofluorescence - Anti-UGT1A1 antibody (ab237810)

HepG2 (human liver hepatocellular carcinoma cell line) cells stained for UGT1A1 (green) using ab237810 at 1/100 dilution in ICC/IF, followed by Alexa Fluor® 488-conjugated goat anti-rabbit IgG (H+L). Counterstained with DAPI (blue).

The cells were fixed in 4% formaldehyde, permeabilized using 0.2% Triton X-100 and blocked in 10% normal Goat Serum. The cells were then incubated with the antibody overnight at 4°C.

**Please note:** All products are "FOR RESEARCH USE ONLY. NOT FOR USE IN DIAGNOSTIC PROCEDURES"

**Our Abpromise to you: Quality guaranteed and expert technical support**

- 
- Replacement or refund for products not performing as stated on the datasheet
  - Valid for 12 months from date of delivery
  - Response to your inquiry within 24 hours
  
  - We provide support in Chinese, English, French, German, Japanese and Spanish
  - Extensive multi-media technical resources to help you
  - We investigate all quality concerns to ensure our products perform to the highest standards

If the product does not perform as described on this datasheet, we will offer a refund or replacement. For full details of the Abpromise, please visit <https://www.abcam.com/abpromise> or contact our technical team.

### **Terms and conditions**

---

- Guarantee only valid for products bought direct from Abcam or one of our authorized distributors