

Anti-ULBP2 antibody ab88645

[2 References](#) [3 Images](#)

Overview

Product name	Anti-ULBP2 antibody
Description	Mouse polyclonal to ULBP2
Host species	Mouse
Tested applications	Suitable for: WB, Flow Cyt
Species reactivity	Reacts with: Human
Immunogen	Recombinant full length protein within Human ULBP2 aa 1-250. The exact immunogen sequence used to generate this antibody is proprietary information. If additional detail on the immunogen is needed to determine the suitability of the antibody for your needs, please contact our Scientific Support team to discuss your requirements. Database link: Q9BZM5
Positive control	Human ovary cancer tissue lysate. Cell lysate from transfected 293T cells.
General notes	<p>The Life Science industry has been in the grips of a reproducibility crisis for a number of years. Abcam is leading the way in addressing this with our range of recombinant monoclonal antibodies and knockout edited cell lines for gold-standard validation. Please check that this product meets your needs before purchasing.</p> <p>If you have any questions, special requirements or concerns, please send us an inquiry and/or contact our Support team ahead of purchase. Recommended alternatives for this product can be found below, along with publications, customer reviews and Q&As</p>

Properties

Form	Liquid
Storage instructions	Shipped at 4°C. Upon delivery aliquot and store at -20°C or -80°C. Avoid repeated freeze / thaw cycles.
Storage buffer	pH: 7.4 Constituent: PBS
Purity	Protein A purified
Clonality	Polyclonal
Isotype	IgG

Applications

The Abpromise guarantee

Our **Abpromise guarantee** covers the use of ab88645 in the following tested applications.

The application notes include recommended starting dilutions; optimal dilutions/concentrations should be determined by the end user.

Application	Abreviews	Notes
WB		Use a concentration of 1 µg/ml. Predicted molecular weight: 27 kDa.
Flow Cyt		Use at an assay dependent concentration. ab37355 - Mouse polyclonal IgG, is suitable for use as an isotype control with this antibody.

Target

Function

Ligand for the NKG2D receptor, together with at least ULBP1 and ULBP3. ULBPs activate multiple signaling pathways in primary NK cells, resulting in the production of cytokines and chemokines. Binding of ULBPs ligands to NKG2D induces calcium mobilization and activation of the JAK2, STAT5, ERK and PI3K kinase/Akt signal transduction pathway. In CMV infected cells, interacts with soluble CMV glycoprotein UL16. The interaction with UL16 blocked the interaction with the NKG2D receptor, providing a mechanism by which CMV infected cells might escape the immune system. UL16 also causes ULBP2 to be retained in the ER and cis-Golgi apparatus so that it does not reach the cell surface.

Tissue specificity

Expressed in various types of cancer cell lines and in the fetus, but not in normal tissues.

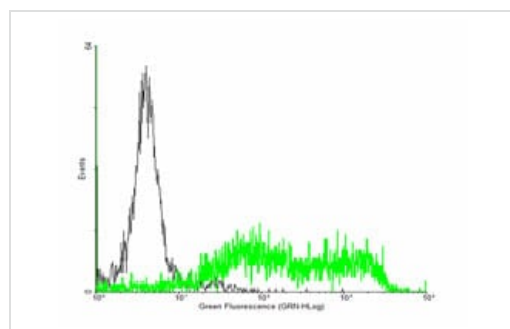
Sequence similarities

Belongs to the MHC class I family.

Cellular localization

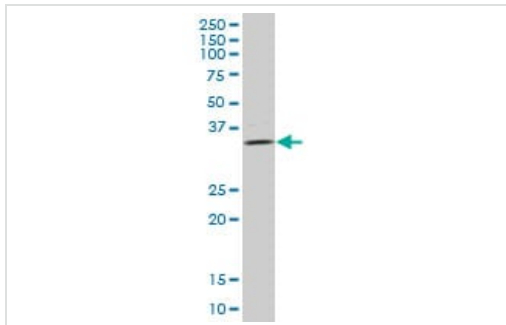
Cell membrane. Secreted.

Images



ab88645 detecting ULBP2 in ULBP2-expressing 293 cells (Green) compared with negative control 293 cells (Black) by flow cytometry.

Flow Cytometry - Anti-ULBP2 antibody (ab88645)

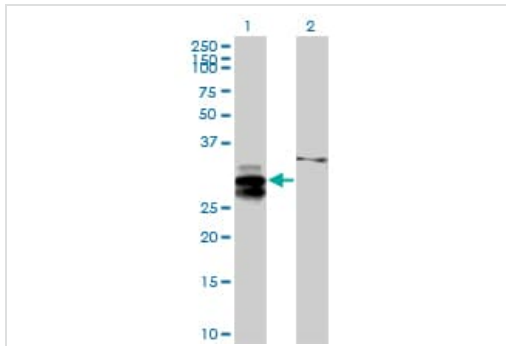


Western blot - Anti-ULBP2 antibody (ab88645)

Anti-ULBP2 antibody (ab88645) at 1 µg/ml + Human ovary cancer tissue lysate at 50 µg

Predicted band size: 27 kDa

Observed band size: ~35 kDa



Western blot - Anti-ULBP2 antibody (ab88645)

All lanes : Anti-ULBP2 antibody (ab88645) at 1 µg/ml

Lane 1 : cell lysate from ULBP2 transfected 293T cells

Lane 2 : cell lysate from non transfected 293T cells

Lysates/proteins at 25 µg per lane.

Predicted band size: 27 kDa

Observed band size: ~29 kDa

Additional bands at: ~27 kDa, ~33 kDa. We are unsure as to the identity of these extra bands.

Please note: All products are "FOR RESEARCH USE ONLY. NOT FOR USE IN DIAGNOSTIC PROCEDURES"

Our Abpromise to you: Quality guaranteed and expert technical support

- Replacement or refund for products not performing as stated on the datasheet
- Valid for 12 months from date of delivery
- Response to your inquiry within 24 hours
- We provide support in Chinese, English, French, German, Japanese and Spanish
- Extensive multi-media technical resources to help you
- We investigate all quality concerns to ensure our products perform to the highest standards

If the product does not perform as described on this datasheet, we will offer a refund or replacement. For full details of the Abpromise, please visit <https://www.abcam.com/abpromise> or contact our technical team.

Terms and conditions

- Guarantee only valid for products bought direct from Abcam or one of our authorized distributors