

## Product datasheet

# Anti-UQCRC2 antibody [EPR13051] ab203832

Recombinant RabMAb

★★★★★ [1 Abreviews](#) [16 References](#) [10 Images](#)

### Overview

<b>Product name</b>	Anti-UQCRC2 antibody [EPR13051]
<b>Description</b>	Rabbit monoclonal [EPR13051] to UQCRC2
<b>Host species</b>	Rabbit
<b>Tested applications</b>	<b>Suitable for:</b> Flow Cyt (Intra), IHC-P, WB, ICC/IF, IP
<b>Species reactivity</b>	<b>Reacts with:</b> Mouse, Rat, Human
<b>Immunogen</b>	Synthetic peptide. This information is proprietary to Abcam and/or its suppliers.
<b>Positive control</b>	WB: Human fetal brain, fetal heart and fetal kidney lysates; HepG2, HEK-293, Jurkat, C6 and PC-12 cell lysates; Mouse heart, rat brain and rat kidney lysates. IHC-P: Human liver tissue. ICC/IF: HepG2 and Jurkat cells. Flow Cyt (intra): Jurkat cells. IP: HepG2 and HEK-293 whole cell lysates.
<b>General notes</b>	<p>This product is a recombinant monoclonal antibody, which offers several advantages including:</p> <ul style="list-style-type: none"><li>- High batch-to-batch consistency and reproducibility</li><li>- Improved sensitivity and specificity</li><li>- Long-term security of supply</li><li>- Animal-free production</li></ul> <p>For more information <a href="#">see here</a>.</p> <p>Our RabMAb<sup>®</sup> technology is a patented hybridoma-based technology for making rabbit monoclonal antibodies. For details on our patents, please refer to <a href="#">RabMAb<sup>®</sup> patents</a>.</p>

### Properties

<b>Form</b>	Liquid
<b>Storage instructions</b>	Shipped at 4°C. Store at +4°C short term (1-2 weeks). Upon delivery aliquot. Store at -20°C long term. Avoid freeze / thaw cycle.
<b>Storage buffer</b>	pH: 7.2 Preservative: 0.01% Sodium azide Constituents: 59% PBS, 40% Glycerol (glycerin, glycerine), 0.05% BSA
<b>Purity</b>	Protein A purified
<b>Clonality</b>	Monoclonal
<b>Clone number</b>	EPR13051

Isotype

IgG

## Applications

### The Abpromise guarantee

Our **Abpromise guarantee** covers the use of ab203832 in the following tested applications.

The application notes include recommended starting dilutions; optimal dilutions/concentrations should be determined by the end user.

Application	Abreviews	Notes
Flow Cyt (Intra)		1/150.
IHC-P		1/150. Perform heat mediated antigen retrieval with Tris/EDTA buffer pH 9.0 before commencing with IHC staining protocol.
WB	★★★★★ (1)	1/2000. Detects a band of approximately 48 kDa (predicted molecular weight: 48 kDa).
ICC/IF		1/300.
IP		1/50.

## Target

### Function

This is a component of the ubiquinol-cytochrome c reductase complex (complex III or cytochrome b-c1 complex), which is part of the mitochondrial respiratory chain. The core protein 2 is required for the assembly of the complex.

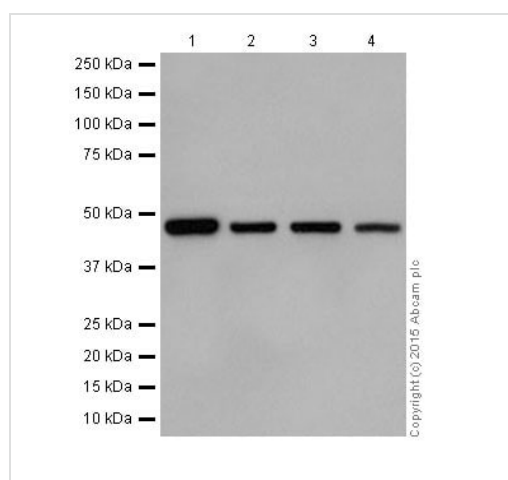
### Sequence similarities

Belongs to the peptidase M16 family. UQCRC2/QCR2 subfamily.

### Cellular localization

Mitochondrion inner membrane.

## Images



Western blot - Anti-UQCRC2 antibody [EPR13051] (ab203832)

**All lanes** : Anti-UQCRC2 antibody [EPR13051] (ab203832) at 1/2000 dilution

**Lane 1** : Human fetal brain lysate

**Lane 2** : HepG2 (Human liver hepatocellular carcinoma) cell lysate

**Lane 3** : HEK-293 (Human epithelial cells from embryonic kidney) cell lysate

**Lane 4** : Jurkat (Human T cell leukemia cells from peripheral blood) cell lysate

Lysates/proteins at 20 µg per lane.

### Secondary

**All lanes** : Goat Anti-Rabbit IgG H&L (HRP) (**ab97051**) at 1/50000

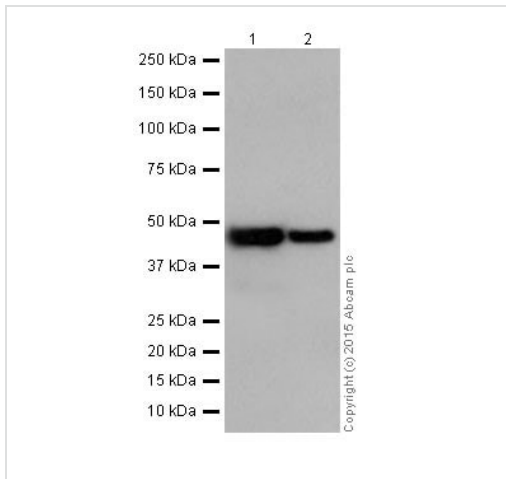
dilution

**Predicted band size:** 48 kDa

**Observed band size:** 48 kDa

**Exposure time:** 3 seconds

Blocking/Dilution buffer: 5% NFDm/TBST.



Western blot - Anti-UQCRC2 antibody [EPR13051]  
(ab203832)

**All lanes :** Anti-UQCRC2 antibody [EPR13051] (ab203832) at 1/2000 dilution

**Lane 1 :** Human fetal heart lysate

**Lane 2 :** Human fetal kidney lysate

Lysates/proteins at 10 µg per lane.

**Secondary**

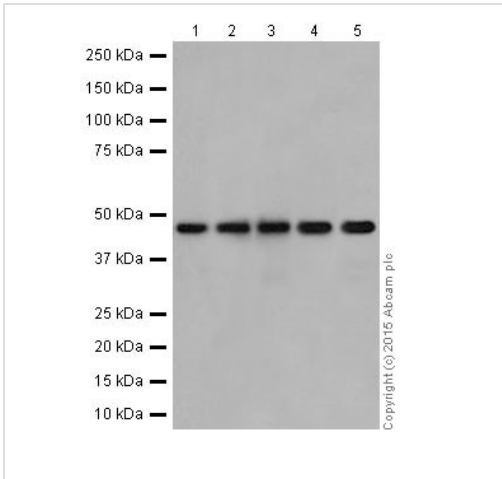
**All lanes :** Anti-Rabbit IgG (HRP), specific to the non-reduced form of IgG at 1/10000 dilution

**Predicted band size:** 48 kDa

**Observed band size:** 48 kDa

**Exposure time:** 3 seconds

Blocking/Dilution buffer: 5% NFDm/TBST.



Western blot - Anti-UQCRC2 antibody [EPR13051] (ab203832)

**All lanes :** Anti-UQCRC2 antibody [EPR13051] (ab203832) at 1/2000 dilution

**Lane 1 :** Mouse heart lysate

**Lane 2 :** Rat brain lysate

**Lane 3 :** Rat kidney lysate

**Lane 4 :** C6 (Rat glial tumor cells) cell lysate

**Lane 5 :** PC-12 (Rat adrenal gland pheochromocytoma) cell lysate

Lysates/proteins at 10 µg per lane.

### Secondary

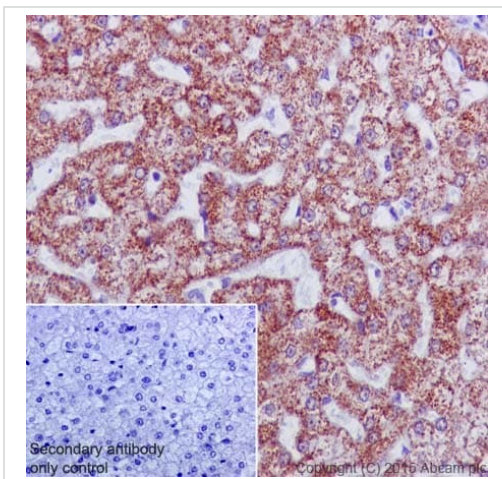
**All lanes :** Goat Anti-Rabbit IgG H&L (HRP) (**ab97051**) at 1/50000 dilution

**Predicted band size:** 48 kDa

**Observed band size:** 48 kDa

**Exposure time:** 5 seconds

Blocking/Dilution buffer: 5% NFD/MTBST.

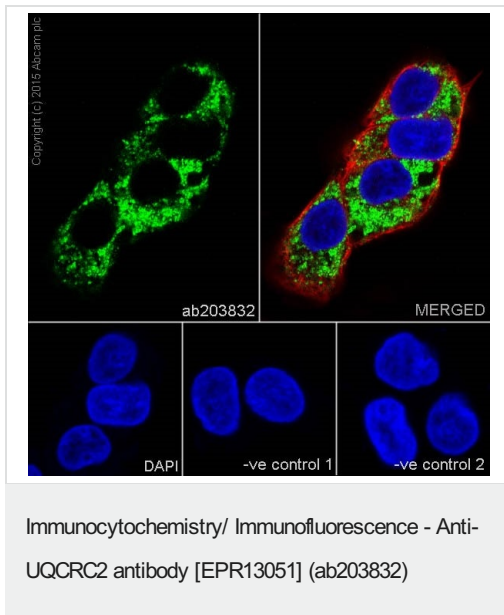


Immunohistochemistry (Formalin/PFA-fixed paraffin-embedded sections) - Anti-UQCRC2 antibody [EPR13051] (ab203832)

Immunohistochemical analysis of paraffin-embedded Human liver tissue labeling UQCRC2 with ab203832 at 1/150 dilution, followed by Goat Anti-Rabbit IgG H&L (HRP) (**ab97051**) at 1/500 dilution. Cytoplasmic staining on Human liver tissue is observed. Counter stained with Hematoxylin.

Secondary antibody only control: Used PBS instead of primary antibody, secondary antibody is Goat Anti-Rabbit IgG H&L (HRP) (**ab97051**) at 1/500 dilution.

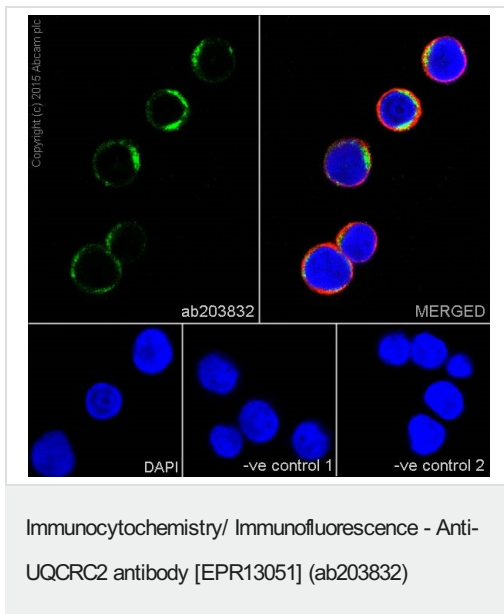
Perform heat mediated antigen retrieval with Tris/EDTA buffer pH 9.0 before commencing with IHC staining protocol.



Immunofluorescent analysis of 100% methanol-fixed, 0.1% Triton X-100 permeabilized HepG2 (Human liver hepatocellular carcinoma) cells labeling UQCRC2 with ab203832 at 1/300 dilution, followed by Goat anti-rabbit IgG (Alexa Fluor® 488) (**ab150077**) secondary antibody at 1/1000 dilution (green). Confocal image showing cytoplasmic staining on HepG2 cell line. The nuclear counterstain is DAPI (blue). Tubulin is detected with **ab7291** (anti-Tubulin mouse mAb) at 1/1000 dilution and **ab150120** (AlexaFluor®594 Goat anti-Mouse secondary) at 1/1000 dilution (red).

The negative controls are as follows:-

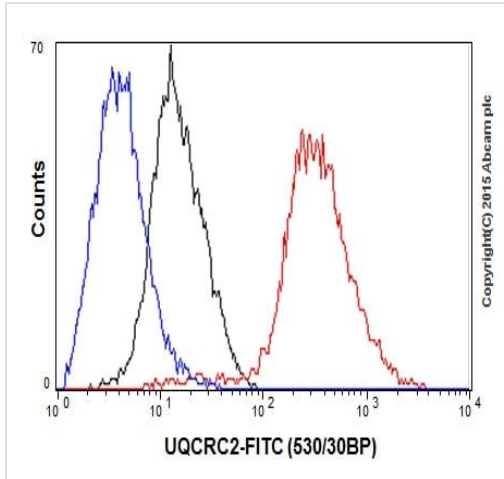
-ve control 1: ab203832 at 1/300 dilution followed by **ab150120** (AlexaFluor®594 Goat anti-Mouse secondary) at 1/1000 dilution.  
 -ve control 2: **ab7291** (anti-Tubulin mouse mAb) at 1/1000 dilution followed by **ab150077** (Alexa Fluor®488 Goat Anti-Rabbit IgG H&L) at 1/1000 dilution.



Immunofluorescent analysis of 100% methanol-fixed, 0.1% Triton X-100 permeabilized Jurkat (Human T cell leukemia cells from peripheral blood) cells labeling UQCRC2 with ab203832 at 1/300 dilution, followed by Goat anti-rabbit IgG (Alexa Fluor® 488) (**ab150077**) secondary antibody at 1/1000 dilution (green). Confocal image showing cytoplasmic staining on Jurkat cell line. The nuclear counterstain is DAPI (blue). Tubulin is detected with **ab7291** (anti-Tubulin mouse mAb) at 1/1000 dilution and **ab150120** (AlexaFluor®594 Goat anti-Mouse secondary) at 1/1000 dilution (red).

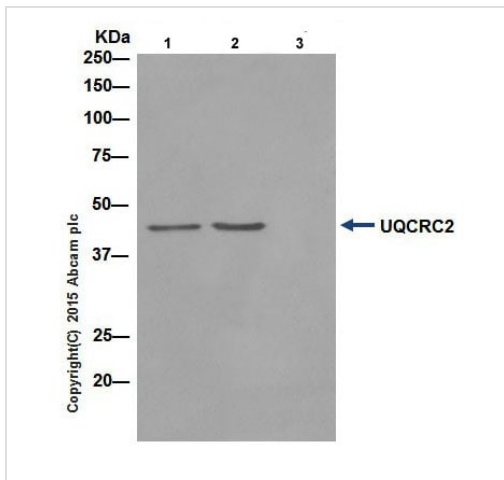
The negative controls are as follows:-

-ve control 1: ab203832 at 1/300 dilution followed by **ab150120** (AlexaFluor®594 Goat anti-Mouse secondary) at 1/1000 dilution.  
 -ve control 2: **ab7291** (anti-Tubulin mouse mAb) at 1/1000 dilution followed by **ab150077** (Alexa Fluor®488 Goat Anti-Rabbit IgG H&L) at 1/1000 dilution.



Flow Cytometry (Intracellular) - Anti-UQCRC2 antibody [EPR13051] (ab203832)

Intracellular flow cytometric analysis of 4% paraformaldehyde-fixed Jurkat (Human T cell leukemia cells from peripheral blood) cells labeling UQCRC2 with ab203832 at 1/150 dilution (red) compared with a rabbit monoclonal IgG isotype control (**ab172730**; black) and an unlabelled control (cells without incubation with primary antibody and secondary antibody; blue). Goat anti rabbit IgG (FITC) at 1/150 dilution was used as the secondary antibody.

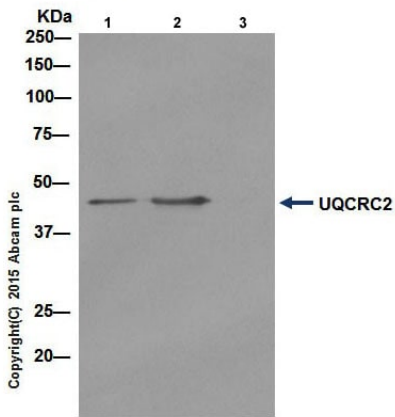


Immunoprecipitation - Anti-UQCRC2 antibody [EPR13051] (ab203832)

UQCRC2 was immunoprecipitated from 1mg of HepG2 (Human liver hepatocellular carcinoma) whole cell lysate with ab203832 at 1/50 dilution. Western blot was performed from the immunoprecipitate using ab203832 at 1/1000 dilution. Anti-Rabbit IgG (HRP), specific to the non-reduced form of IgG, was used as secondary antibody at 1/1500.

Lane 1: HepG2 whole cell lysate 10ug (Input). Lane 2: ab203832 IP in HepG2 whole cell lysate. Lane 3: Rabbit monoclonal IgG (**ab172730**) instead of ab203832 in HepG2 whole cell lysate.

Blocking and dilution buffer and concentration: 5% NFDm/TBST. Exposure time: 1 second.



Immunoprecipitation - Anti-UQCRC2 antibody  
[EPR13051] (ab203832)

UQCRC2 was immunoprecipitated from 1mg of HEK-293 (Human epithelial cells from embryonic kidney) whole cell lysate with ab203832 at 1/50 dilution. Western blot was performed from the immunoprecipitate using ab203832 at 1/1000 dilution. Anti-Rabbit IgG (HRP), specific to the non-reduced form of IgG, was used as secondary antibody at 1/1500.

Lane 1: HEK-293 whole cell lysate 10ug (Input). Lane 2: ab203832 IP in HEK-293 whole cell lysate. Lane 3: Rabbit monoclonal IgG ([ab172730](#)) instead of ab203832 in HEK-293 whole cell lysate.

Blocking and dilution buffer and concentration: 5% NFDN/TBST.

Exposure time: 1 second.

### Why choose a recombinant antibody?

 <p><b>Research with confidence</b> Consistent and reproducible results</p>	 <p><b>Long-term and scalable supply</b> Recombinant technology</p>
 <p><b>Success from the first experiment</b> Confirmed specificity</p>	 <p><b>Ethical standards compliant</b> Animal-free production</p>

Anti-UQCRC2 antibody [EPR13051] (ab203832)

**Please note:** All products are "FOR RESEARCH USE ONLY. NOT FOR USE IN DIAGNOSTIC PROCEDURES"

### Our Abpromise to you: Quality guaranteed and expert technical support

- Replacement or refund for products not performing as stated on the datasheet
- Valid for 12 months from date of delivery

- Response to your inquiry within 24 hours
- We provide support in Chinese, English, French, German, Japanese and Spanish
- Extensive multi-media technical resources to help you
- We investigate all quality concerns to ensure our products perform to the highest standards

If the product does not perform as described on this datasheet, we will offer a refund or replacement. For full details of the Abpromise, please visit <https://www.abcam.com/abpromise> or contact our technical team.

### **Terms and conditions**

---

- Guarantee only valid for products bought direct from Abcam or one of our authorized distributors