


Product datasheet

Anti-UQCRH antibody [EPR9039(B)] ab134949

Recombinant RabMAb

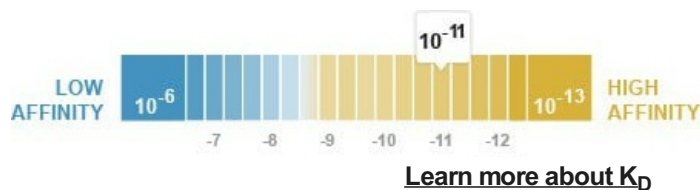
[7 References](#) [6 Images](#)

Overview

Product name	Anti-UQCRH antibody [EPR9039(B)]
Description	Rabbit monoclonal [EPR9039(B)] to UQCRH
Host species	Rabbit
Tested applications	Suitable for: WB, IHC-P Unsuitable for: Flow Cyt or ICC/IF
Species reactivity	Reacts with: Human Predicted to work with: Mouse, Rat 
Immunogen	Synthetic peptide within Human UQCRH aa 50-150. The exact sequence is proprietary.
Positive control	Human colon and thyroid carcinoma tissues; HL60 cells; HL60, fetal muscle, fetal liver, fetal brain, fetal heart, fetal kidney, and Human spleen lysates.
General notes	<p>This product is a recombinant monoclonal antibody, which offers several advantages including:</p> <ul style="list-style-type: none"> - High batch-to-batch consistency and reproducibility - Improved sensitivity and specificity - Long-term security of supply - Animal-free production <p>For more information see here.</p> <p>Our RabMAb[®] technology is a patented hybridoma-based technology for making rabbit monoclonal antibodies. For details on our patents, please refer to RabMAb[®] patents.</p>

Properties

Form	Liquid
Storage instructions	Shipped at 4°C. Store at -20°C.
Dissociation constant (K _D)	K _D = 3.50 x 10 ⁻¹¹ M



Storage buffer	pH: 7.2 Preservative: 0.01% Sodium azide Constituents: 9% PBS, 40% Glycerol (glycerin, glycerine), 0.05% BSA, 50% Tissue culture supernatant
Purity	Protein A purified
Clonality	Monoclonal
Clone number	EPR9039(B)
Isotype	IgG

Applications

The Abpromise guarantee Our **Abpromise guarantee** covers the use of ab134949 in the following tested applications. The application notes include recommended starting dilutions; optimal dilutions/concentrations should be determined by the end user.

Application	Abreviews	Notes
WB		1/1000 - 1/10000. Predicted molecular weight: 11 kDa.
IHC-P		1/50 - 1/100. Perform heat mediated antigen retrieval with citrate buffer pH 6 before commencing with IHC staining protocol.

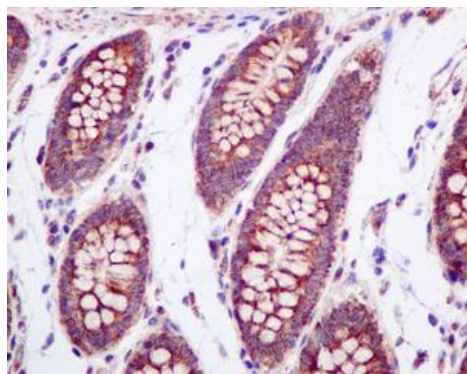
Application notes Is unsuitable for Flow Cyt or ICC/IF.

Target

Relevance UQCRH is a component of the ubiquinol-cytochrome c reductase complex (complex III or cytochrome b-c1 complex), which is part of the mitochondrial respiratory chain. It may play a role in electron transfer between cytochromes c1 and c.

Cellular localization Mitochondrial. Mitochondrion inner membrane.

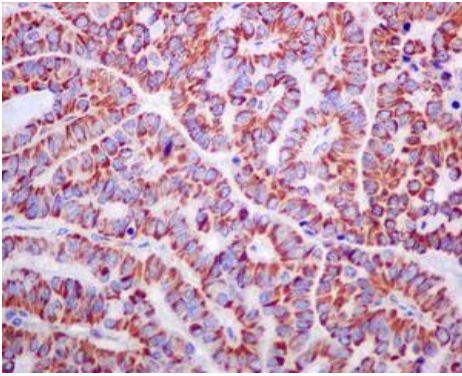
Images



Immunohistochemical analysis of paraffin-embedded Human colon tissue labelling UQCRH with ab134949 at 1/50 dilution.

Perform heat mediated antigen retrieval with citrate buffer pH 6 before commencing with IHC staining protocol.

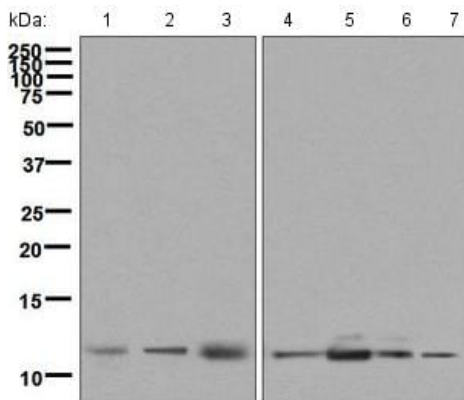
Immunohistochemistry (Formalin/PFA-fixed paraffin-embedded sections) - Anti-UQCRH antibody [EPR9039(B)] (ab134949)



Immunohistochemistry (Formalin/PFA-fixed paraffin-embedded sections) - Anti-UQCRH antibody [EPR9039(B)] (ab134949)

Immunohistochemical analysis of paraffin-embedded human thyroid carcinoma tissue labelling UQCRH with ab134949 at 1/50 dilution.

Perform heat mediated antigen retrieval with citrate buffer pH 6 before commencing with IHC staining protocol.



Western blot - Anti-UQCRH antibody [EPR9039(B)] (ab134949)

All lanes : Anti-UQCRH antibody [EPR9039(B)] (ab134949) at 1/1000 dilution

Lane 1 : Fetal muscle lysate

Lane 2 : Fetal liver lysate

Lane 3 : HL60 cell lysate

Lane 4 : Fetal brain lysate

Lane 5 : Fetal heart lysate

Lane 6 : Fetal kidney lysate

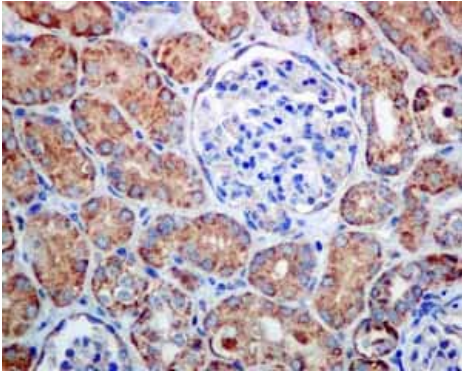
Lane 7 : Human spleen lysate

Lysates/proteins at 10 µg per lane.

Secondary

All lanes : HRP labelled goat anti-rabbit at 1/2000 dilution

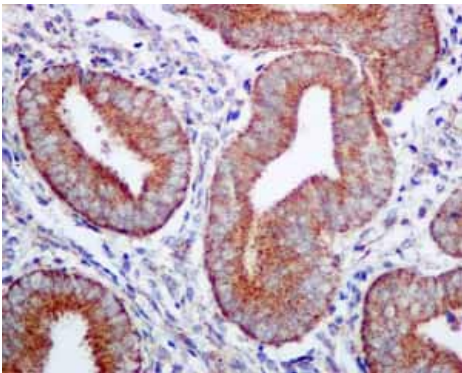
Predicted band size: 11 kDa



Immunohistochemistry (Formalin/PFA-fixed paraffin-embedded sections) - Anti-UQCRH antibody [EPR9039(B)] (ab134949)

Immunohistochemical analysis using ab134949 showing positive staining in Normal kidney tissue.

Perform heat mediated antigen retrieval with citrate buffer pH 6 before commencing with IHC staining protocol.

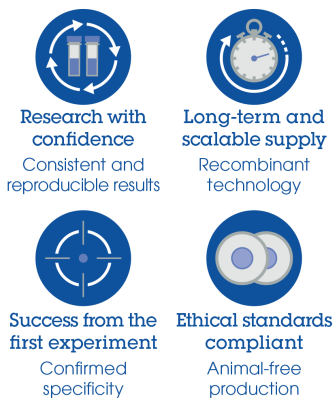


Immunohistochemistry (Formalin/PFA-fixed paraffin-embedded sections) - Anti-UQCRH antibody [EPR9039(B)] (ab134949)

Immunohistochemical analysis using ab134949 showing positive staining in Normal uterus tissue.

Perform heat mediated antigen retrieval with citrate buffer pH 6 before commencing with IHC staining protocol.

Why choose a recombinant antibody?



Anti-UQCRH antibody [EPR9039(B)] (ab134949)

Please note: All products are "FOR RESEARCH USE ONLY. NOT FOR USE IN DIAGNOSTIC PROCEDURES"

Our Abpromise to you: Quality guaranteed and expert technical support

- Replacement or refund for products not performing as stated on the datasheet
- Valid for 12 months from date of delivery
- Response to your inquiry within 24 hours
- We provide support in Chinese, English, French, German, Japanese and Spanish
- Extensive multi-media technical resources to help you
- We investigate all quality concerns to ensure our products perform to the highest standards

If the product does not perform as described on this datasheet, we will offer a refund or replacement. For full details of the Abpromise, please visit <https://www.abcam.com/abpromise> or contact our technical team.

Terms and conditions

- Guarantee only valid for products bought direct from Abcam or one of our authorized distributors