

Product datasheet

Anti-VAMP1 antibody [EPR7325(2)] ab151712

Recombinant RabMAb

★★★★★ [1 Abreviews](#) [4 References](#) [8 Images](#)

Overview

Product name	Anti-VAMP1 antibody [EPR7325(2)]
Description	Rabbit monoclonal [EPR7325(2)] to VAMP1
Host species	Rabbit
Tested applications	Suitable for: WB, IHC-P Unsuitable for: ICC/IF or IP
Species reactivity	Reacts with: Mouse, Rat, Human
Immunogen	Synthetic peptide. This information is proprietary to Abcam and/or its suppliers.
Positive control	WB: Mouse brain, Rat brain, Human cerebellum lysate. IHC-P: Human brain
General notes	This product is a recombinant monoclonal antibody, which offers several advantages including: <ul style="list-style-type: none">- High batch-to-batch consistency and reproducibility- Improved sensitivity and specificity- Long-term security of supply- Animal-free production For more information see here . Our RabMAb [®] technology is a patented hybridoma-based technology for making rabbit monoclonal antibodies. For details on our patents, please refer to RabMAb[®] patents .

Properties

Form	Liquid
Storage instructions	Shipped at 4°C. Store at -20°C.
Storage buffer	pH: 7.2 Preservative: 0.01% Sodium azide Constituents: 9% PBS, 40% Glycerol (glycerin, glycerine), 0.05% BSA, 50% Tissue culture supernatant
Purity	Protein A purified
Clonality	Monoclonal
Clone number	EPR7325(2)
Isotype	IgG

Applications

The Abpromise guarantee

Our **Abpromise guarantee** covers the use of ab151712 in the following tested applications.

The application notes include recommended starting dilutions; optimal dilutions/concentrations should be determined by the end user.

Application	Abreviews	Notes
WB	★★★★★ (1)	1/1000 - 1/10000. Predicted molecular weight: 13 kDa.
IHC-P		1/100 - 1/250. Perform heat mediated antigen retrieval before commencing with IHC staining protocol.

Application notes

Is unsuitable for ICC/IF or IP.

Target

Function

Involved in the targeting and/or fusion of transport vesicles to their target membrane.

Tissue specificity

Nervous system, skeletal muscle and adipose tissue.

Sequence similarities

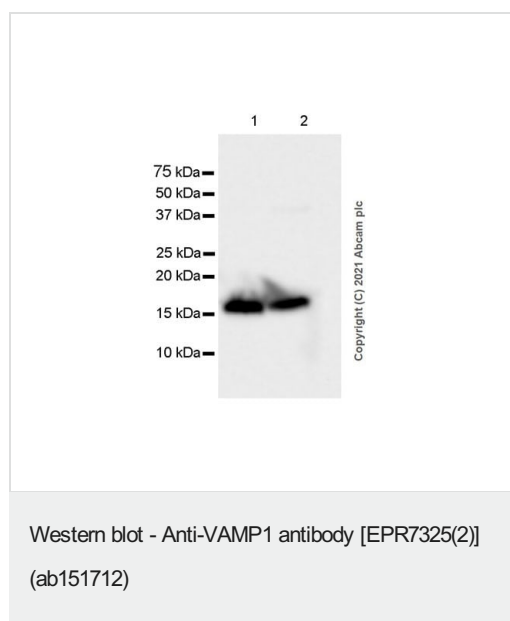
Belongs to the synaptobrevin family.

Contains 1 v-SNARE coiled-coil homology domain.

Cellular localization

Mitochondrion outer membrane; Cytoplasmic vesicle > secretory vesicle > synaptic vesicle membrane. Cell junction > synapse > synaptosome and Cytoplasmic vesicle membrane. Cell junction > synapse > synaptosome.

Images



All lanes : Anti-VAMP1 antibody [EPR7325(2)] (ab151712) at 1/1000 dilution

Lane 1 : Mouse brain tissue lysate

Lane 2 : Rat brain tissue lysate

Lysates/proteins at 20 µg per lane.

Secondary

All lanes : Goat Anti-Rabbit IgG H&L (HRP) (**ab97051**) at 1/100000 dilution

Predicted band size: 13 kDa

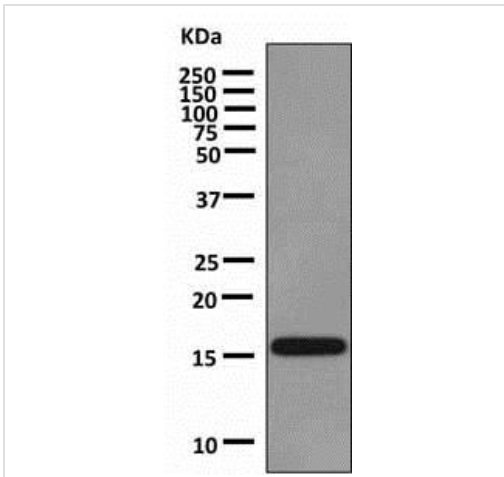
Observed band size: 16 kDa

Blocking and diluting buffer and concentration: 5% NFDm/TBST

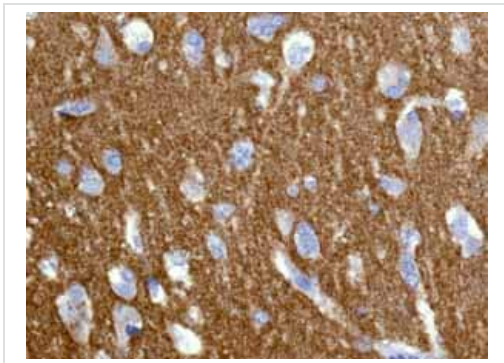
Exposure time: 10 seconds

Anti-VAMP1 antibody [EPR7325(2)] (ab151712) at 1/1000 dilution
+ Human cerebellum lysate at 10 μ g

Predicted band size: 13 kDa



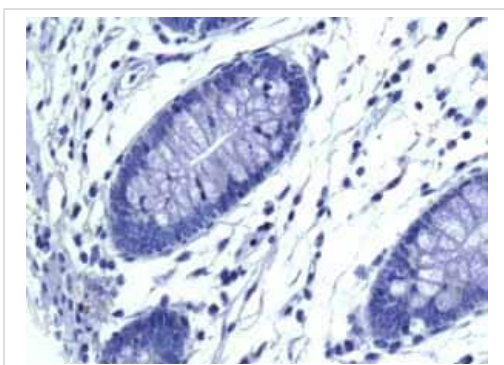
Western blot - Anti-VAMP1 antibody [EPR7325(2)]
(ab151712)



Immunohistochemical analysis of paraffin embedded normal Human brain tissue using ab151712 showing +ve staining.

Perform heat mediated antigen retrieval before commencing with IHC staining protocol.

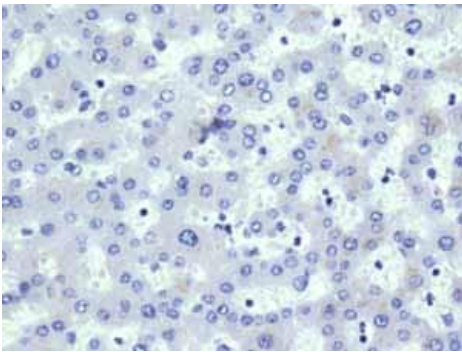
Immunohistochemistry (Formalin/PFA-fixed paraffin-embedded sections) - Anti-VAMP1 antibody [EPR7325(2)] (ab151712)



Immunohistochemical analysis of paraffin embedded normal Human colon tissue using ab151712 showing -ve staining.

Perform heat mediated antigen retrieval before commencing with IHC staining protocol.

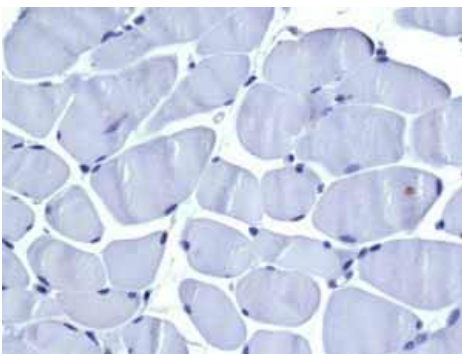
Immunohistochemistry (Formalin/PFA-fixed paraffin-embedded sections) - Anti-VAMP1 antibody [EPR7325(2)] (ab151712)



Immunohistochemistry (Formalin/PFA-fixed paraffin-embedded sections) - Anti-VAMP1 antibody [EPR7325(2)] (ab151712)

Immunohistochemical analysis of paraffin embedded normal Human liver tissue using ab151712 showing -ve staining.

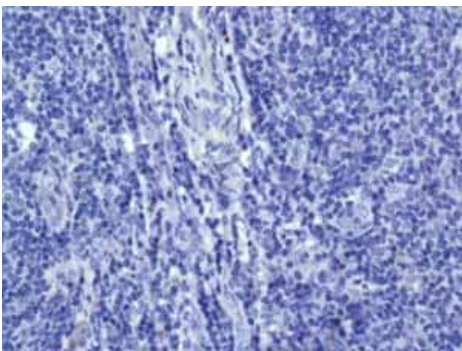
Perform heat mediated antigen retrieval before commencing with IHC staining protocol.



Immunohistochemistry (Formalin/PFA-fixed paraffin-embedded sections) - Anti-VAMP1 antibody [EPR7325(2)] (ab151712)

Immunohistochemical analysis of paraffin embedded Human Skeletal muscle tissue using ab151712 showing -ve staining.

Perform heat mediated antigen retrieval before commencing with IHC staining protocol.



Immunohistochemistry (Formalin/PFA-fixed paraffin-embedded sections) - Anti-VAMP1 antibody [EPR7325(2)] (ab151712)

Immunohistochemical analysis of paraffin embedded normal Human tonsil tissue using ab151712 showing -ve staining.

Perform heat mediated antigen retrieval before commencing with IHC staining protocol.

Why choose a recombinant antibody?



Research with confidence
Consistent and reproducible results



Long-term and scalable supply
Recombinant technology



Success from the first experiment
Confirmed specificity



Ethical standards compliant
Animal-free production

Anti-VAMP1 antibody [EPR7325(2)] (ab151712)

Please note: All products are "FOR RESEARCH USE ONLY. NOT FOR USE IN DIAGNOSTIC PROCEDURES"

Our Abpromise to you: Quality guaranteed and expert technical support

- Replacement or refund for products not performing as stated on the datasheet
- Valid for 12 months from date of delivery
- Response to your inquiry within 24 hours
- We provide support in Chinese, English, French, German, Japanese and Spanish
- Extensive multi-media technical resources to help you
- We investigate all quality concerns to ensure our products perform to the highest standards

If the product does not perform as described on this datasheet, we will offer a refund or replacement. For full details of the Abpromise, please visit <https://www.abcam.com/abpromise> or contact our technical team.

Terms and conditions

- Guarantee only valid for products bought direct from Abcam or one of our authorized distributors