


Product datasheet

Anti-VAMP2 antibody ab228996

2 Images

Overview

Product name	Anti-VAMP2 antibody
Description	Rabbit polyclonal to VAMP2
Host species	Rabbit
Tested applications	Suitable for: WB, ICC/IF
Species reactivity	Reacts with: Mouse, Rat Predicted to work with: Cow, Human, Xenopus laevis, Zebrafish, Rhesus monkey 
Immunogen	Recombinant full length protein within Human VAMP2. The exact sequence is proprietary. Database link: P63027
Positive control	WB: Mouse brain, rat brain tissue extracts. ICC/IF: DIV9 rat E18 primary cortical neurons.
General notes	<p>The Life Science industry has been in the grips of a reproducibility crisis for a number of years. Abcam is leading the way in addressing this with our range of recombinant monoclonal antibodies and knockout edited cell lines for gold-standard validation. Please check that this product meets your needs before purchasing.</p> <p>If you have any questions, special requirements or concerns, please send us an inquiry and/or contact our Support team ahead of purchase. Recommended alternatives for this product can be found below, along with publications, customer reviews and Q&As</p>

Properties

Form	Liquid
Storage instructions	Shipped at 4°C. Store at +4°C short term (1-2 weeks). Upon delivery aliquot. Store at -20°C. Avoid freeze / thaw cycle.
Storage buffer	pH: 7.00 Preservative: 0.01% Thimerosal (merthiolate) Constituents: 1.21% Tris, 0.75% Glycine, 20% Glycerol (glycerin, glycerine)
Purity	Immunogen affinity purified
Clonality	Polyclonal
Isotype	IgG

Applications

The Abpromise guarantee

Our **Abpromise guarantee** covers the use of ab228996 in the following tested applications.

The application notes include recommended starting dilutions; optimal dilutions/concentrations should be determined by the end user.

Application	Abreviews	Notes
WB		1/500 - 1/3000. Predicted molecular weight: 13 kDa.
ICC/IF		1/100 - 1/1000.

Target

Function

Involved in the targeting and/or fusion of transport vesicles to their target membrane.

Tissue specificity

Nervous system and skeletal muscle.

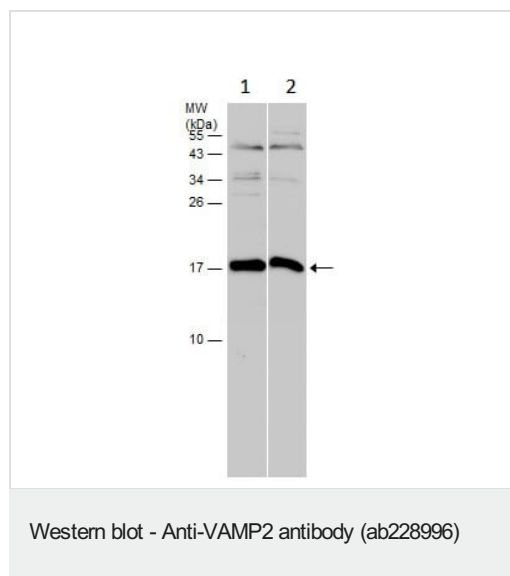
Sequence similarities

Belongs to the synaptobrevin family.
Contains 1 v-SNARE coiled-coil homology domain.

Cellular localization

Cytoplasmic vesicle > secretory vesicle > synaptic vesicle membrane. Cell junction > synapse > synaptosome. Neuronal synaptic vesicles.

Images



All lanes : Anti-VAMP2 antibody (ab228996) at 1/1000 dilution

Lane 1 : Mouse brain tissue extract.

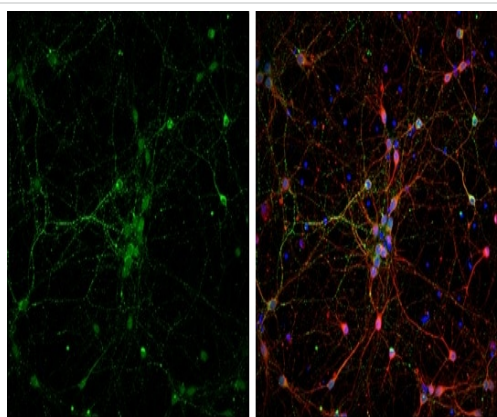
Lane 2 : Rat brain tissue extract.

Lysates/proteins at 50 µg per lane.

Developed using the ECL technique.

Predicted band size: 13 kDa

15% SDS-PAGE gel.



Immunocytochemistry/ Immunofluorescence - Anti-VAMP2 antibody (ab228996)

Paraformaldehyde-fixed DIV9 rat E18 primary cortical neurons stained for VAMP2 protein (green) using **ab28996** at 1/500 dilution in ICC/IF.

Nuclear counterstain: Fluoroshield with Dapi (blue).

Beta Tubulin 3/ Tuj1 (red).

Please note: All products are "FOR RESEARCH USE ONLY. NOT FOR USE IN DIAGNOSTIC PROCEDURES"

Our Abpromise to you: Quality guaranteed and expert technical support

- Replacement or refund for products not performing as stated on the datasheet
- Valid for 12 months from date of delivery
- Response to your inquiry within 24 hours
- We provide support in Chinese, English, French, German, Japanese and Spanish
- Extensive multi-media technical resources to help you
- We investigate all quality concerns to ensure our products perform to the highest standards

If the product does not perform as described on this datasheet, we will offer a refund or replacement. For full details of the Abpromise, please visit <https://www.abcam.com/abpromise> or contact our technical team.

Terms and conditions

- Guarantee only valid for products bought direct from Abcam or one of our authorized distributors