

Product datasheet

Anti-VASA/VAS antibody ab209710

[8 References](#) [3 Images](#)

Overview

Product name	Anti-VASA/VAS antibody
Description	Rabbit polyclonal to VASA/VAS
Host species	Rabbit
Tested applications	Suitable for: IHC - Wholemout, WB
Species reactivity	Reacts with: Zebrafish
Immunogen	Recombinant fragment within Zebrafish VASA/VAS aa 199-526. The exact sequence is proprietary. Database link: O42107
Positive control	Zebrafish embryos; 7 days-post-fertilization medaka embryo; Zebrafish 10 hpf lysate/extract.
General notes	<p>The Life Science industry has been in the grips of a reproducibility crisis for a number of years. Abcam is leading the way in addressing this with our range of recombinant monoclonal antibodies and knockout edited cell lines for gold-standard validation. Please check that this product meets your needs before purchasing.</p> <p>If you have any questions, special requirements or concerns, please send us an inquiry and/or contact our Support team ahead of purchase. Recommended alternatives for this product can be found below, along with publications, customer reviews and Q&As</p>

Properties

Form	Liquid
Storage instructions	Shipped at 4°C. Store at +4°C short term (1-2 weeks). Upon delivery aliquot. Store at -20°C long term. Avoid freeze / thaw cycle.
Storage buffer	pH: 7.00 Preservative: 0.01% Thimerosal (merthiolate) Constituents: 79.99% PBS, 20% Glycerol (glycerin, glycerine)
Purity	Immunogen affinity purified
Clonality	Polyclonal
Isotype	IgG

Applications

The Abpromise guarantee

Our **Abpromise guarantee** covers the use of ab209710 in the following tested applications.

The application notes include recommended starting dilutions; optimal dilutions/concentrations should be determined by the end user.

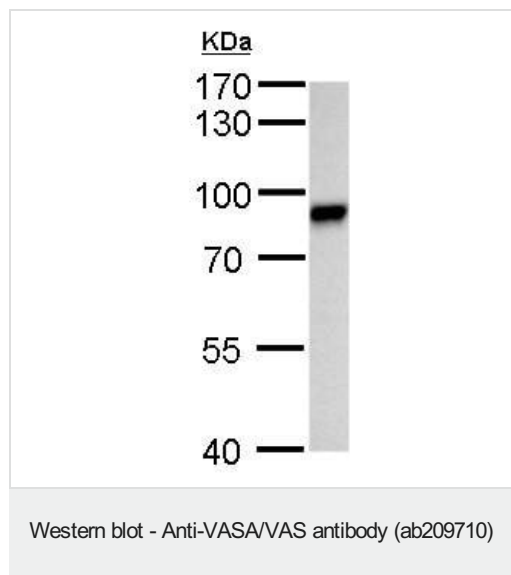
Application	Abreviews	Notes
IHC - Wholemount		1/100 - 1/500.
WB		1/500 - 1/3000. Predicted molecular weight: 77 kDa.

Target

Relevance

VASA is required only in the female germline. It is important for oocyte formation and in the specification of the posterior structures of the embryo.

Images



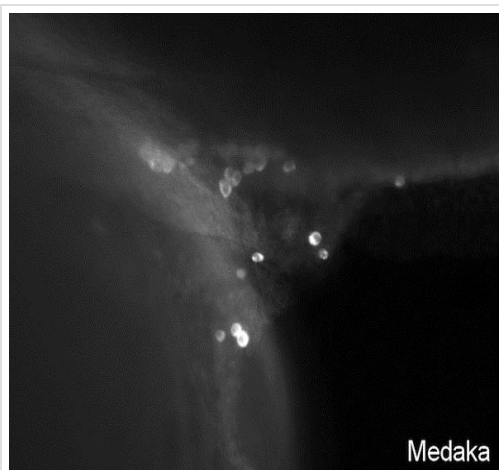
Anti-VASA/VAS antibody (ab209710) at 1/2000 dilution +
Zebrafish 10 hpf lysate/extract at 30 µg

Predicted band size: 77 kDa

7.5 % SDS-PAGE



Immunohistochemical analysis (whole mount) of paraformaldehyde-fixed Zebrafish embryo labeling VASA/VAS (primordial germ cell) with ab209710 at 1/200 dilution.



Immunohistochemical analysis (whole mount) of Zebrafish 7 days-post-fertilization medaka embryo labeling VASA/VAS with ab209710 at 1/100 dilution.

IHC - Wholmount - Anti-VASA/VAS antibody
(ab209710)

Please note: All products are "FOR RESEARCH USE ONLY. NOT FOR USE IN DIAGNOSTIC PROCEDURES"

Our Abpromise to you: Quality guaranteed and expert technical support

- Replacement or refund for products not performing as stated on the datasheet
- Valid for 12 months from date of delivery
- Response to your inquiry within 24 hours
- We provide support in Chinese, English, French, German, Japanese and Spanish
- Extensive multi-media technical resources to help you
- We investigate all quality concerns to ensure our products perform to the highest standards

If the product does not perform as described on this datasheet, we will offer a refund or replacement. For full details of the Abpromise, please visit <https://www.abcam.com/abpromise> or contact our technical team.

Terms and conditions

- Guarantee only valid for products bought direct from Abcam or one of our authorized distributors