

Product datasheet

Anti-VDAC1/Porin antibody [16G9E6BC4] - Mitochondrial Loading Control ab110326

★☆☆☆☆ [2 Abreviews](#) [41 References](#) [1 Image](#)

Overview

Product name	Anti-VDAC1/Porin antibody [16G9E6BC4] - Mitochondrial Loading Control
Description	Mouse monoclonal [16G9E6BC4] to VDAC1/Porin - Mitochondrial Loading Control
Host species	Mouse
Tested applications	Suitable for: WB
Species reactivity	Reacts with: Saccharomyces cerevisiae
Immunogen	Full length native protein (purified). This information is proprietary to Abcam and/or its suppliers.
General notes	<p>This antibody clone is manufactured by Abcam. If you require a custom buffer formulation or conjugation for your experiments, please contact orders@abcam.com.</p> <p>The Life Science industry has been in the grips of a reproducibility crisis for a number of years. Abcam is leading the way in addressing this with our range of recombinant monoclonal antibodies and knockout edited cell lines for gold-standard validation. Please check that this product meets your needs before purchasing.</p> <p>If you have any questions, special requirements or concerns, please send us an inquiry and/or contact our Support team ahead of purchase. Recommended alternatives for this product can be found below, along with publications, customer reviews and Q&As</p> <p>Product was previously marketed under the MitoSciences sub-brand.</p>

Properties

Form	Liquid
Storage instructions	Shipped at 4°C. Store at +4°C. Do Not Freeze.
Storage buffer	pH: 7.5 Preservative: 0.02% Sodium azide Constituent: HEPES buffered saline
Purity	IgG fraction
Purification notes	ab110326 was produced in vitro using hybridomas grown in serum-free medium, and then purified by biochemical fractionation.
Clonality	Monoclonal

Clone number 16G9E6BC4
Isotype IgG1
Light chain type kappa

Applications

The Abpromise guarantee Our **Abpromise guarantee** covers the use of ab110326 in the following tested applications. The application notes include recommended starting dilutions; optimal dilutions/concentrations should be determined by the end user.

Application	Abreviews	Notes
WB	★☆☆☆☆ (1)	Use a concentration of 1 µg/ml. Predicted molecular weight: 30 kDa.

Target

Function Forms a channel through the mitochondrial outer membrane and also the plasma membrane. The channel at the outer mitochondrial membrane allows diffusion of small hydrophilic molecules; in the plasma membrane it is involved in cell volume regulation and apoptosis. It adopts an open conformation at low or zero membrane potential and a closed conformation at potentials above 30-40 mV. The open state has a weak anion selectivity whereas the closed state is cation-selective. May participate in the formation of the permeability transition pore complex (PTPC) responsible for the release of mitochondrial products that triggers apoptosis.

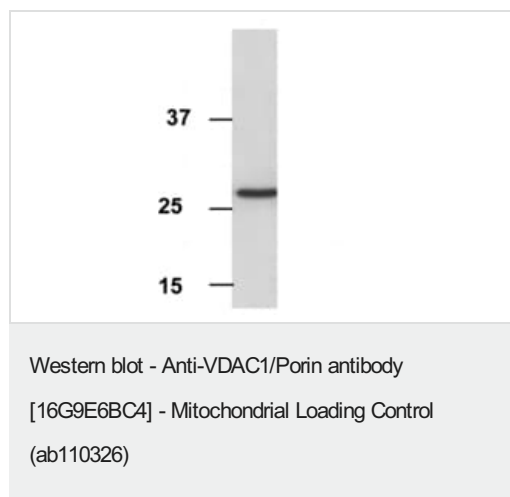
Tissue specificity Heart, liver and skeletal muscle.

Sequence similarities Belongs to the eukaryotic mitochondrial porin family.

Domain Consists mainly of a membrane-spanning beta-barrel formed by 19 beta-strands. The helical N-terminus folds back into the pore opening and plays a role in voltage-gated channel activity.

Cellular localization Mitochondrion outer membrane. Cell membrane.

Images



Anti-VDAC1/Porin antibody [16G9E6BC4] - Mitochondrial Loading Control (ab110326) at 1 µg/ml + Yeast spheroplast membrane fraction.

Predicted band size: 30 kDa

Please note: All products are "FOR RESEARCH USE ONLY. NOT FOR USE IN DIAGNOSTIC PROCEDURES"

Our Abpromise to you: Quality guaranteed and expert technical support

- Replacement or refund for products not performing as stated on the datasheet
- Valid for 12 months from date of delivery
- Response to your inquiry within 24 hours

- We provide support in Chinese, English, French, German, Japanese and Spanish
- Extensive multi-media technical resources to help you
- We investigate all quality concerns to ensure our products perform to the highest standards

If the product does not perform as described on this datasheet, we will offer a refund or replacement. For full details of the Abpromise, please visit <https://www.abcam.com/abpromise> or contact our technical team.

Terms and conditions

- Guarantee only valid for products bought direct from Abcam or one of our authorized distributors