

## Product datasheet

# Anti-VEGF Receptor 3 antibody ab10284

★★★★★ [1 Abreviews](#) [2 References](#) [3 Images](#)

### Overview

---

<b>Product name</b>	Anti-VEGF Receptor 3 antibody
<b>Description</b>	Rabbit polyclonal to VEGF Receptor 3
<b>Host species</b>	Rabbit
<b>Specificity</b>	In Western blots, this antibody shows a moderate cross-reactivity with VEGFR2/KDR and a weak cross-reactivity with VEGFR1/FLT1.
<b>Tested applications</b>	<b>Suitable for:</b> WB, ELISA, Flow Cyt, IHC-Fr, IP, ICC/IF
<b>Species reactivity</b>	<b>Reacts with:</b> Human
<b>Immunogen</b>	Recombinant fragment (His-tag) corresponding to Human VEGF Receptor 3 aa 1-800. Database link: <a href="#">P35916</a> <a href="#">Run BLAST with</a> <a href="#">Run BLAST with</a>
<b>Positive control</b>	IHC-Fr: Human spleen tissue. ICC/IF: MG63 cells. Flow Cyt: HDLEC.
<b>General notes</b>	<p>The Life Science industry has been in the grips of a reproducibility crisis for a number of years. Abcam is leading the way in addressing this with our range of recombinant monoclonal antibodies and knockout edited cell lines for gold-standard validation. Please check that this product meets your needs before purchasing.</p> <p>If you have any questions, special requirements or concerns, please send us an inquiry and/or contact our Support team ahead of purchase. Recommended alternatives for this product can be found below, along with publications, customer reviews and Q&amp;As</p>

### Properties

---

<b>Form</b>	Liquid
<b>Storage instructions</b>	Shipped at 4°C. Store at +4°C short term (1-2 weeks). Upon delivery aliquot. Store at -20°C or -80°C. Avoid freeze / thaw cycle.
<b>Storage buffer</b>	Constituent: PBS
<b>Purity</b>	Protein A purified
<b>Clonality</b>	Polyclonal
<b>Isotype</b>	IgG

### Applications

## The Abpromise guarantee

Our **Abpromise guarantee** covers the use of ab10284 in the following tested applications.

The application notes include recommended starting dilutions; optimal dilutions/concentrations should be determined by the end user.

Application	Abreviews	Notes
WB		Use at an assay dependent concentration.
ELISA		Use at an assay dependent concentration.
Flow Cyt		Use a concentration of 1 - 5 µg/ml. <b>ab171870</b> - Rabbit polyclonal IgG, is suitable for use as an isotype control with this antibody.
IHC-Fr	★★★★★ (1)	Use at an assay dependent concentration.
IP		Use at an assay dependent concentration. PubMed: 19366703
ICC/IF		Use at an assay dependent concentration.

## Target

### Function

Receptor for VEGFC. Has a tyrosine-protein kinase activity.

### Tissue specificity

Placenta, lung, heart, and kidney, does not seem to be expressed in pancreas and brain.

### Involvement in disease

Defects in FLT4 are the cause of lymphedema hereditary type 1A (LMPH1A) [MIM:153100]; also known as Nonne-Milroy lymphedema or Milroy disease. Hereditary lymphedema is a chronic disabling condition which results in swelling of the extremities due to altered lymphatic flow. Patients with lymphedema suffer from recurrent local infections and physical impairment. Note=Defects in FLT4 are found in juvenile hemangioma. Juvenile hemangiomas are the most common tumors of infancy, occurring as many as 10% of all births. These benign vascular lesions enlarge rapidly during the first year of life by hyperplasia of endothelial cells and attendant pericytes, and then spontaneously involute over a period of years, leaving loose fibrofatty tissue.

### Sequence similarities

Belongs to the protein kinase superfamily. Tyr protein kinase family. CSF-1/PDGF receptor subfamily.

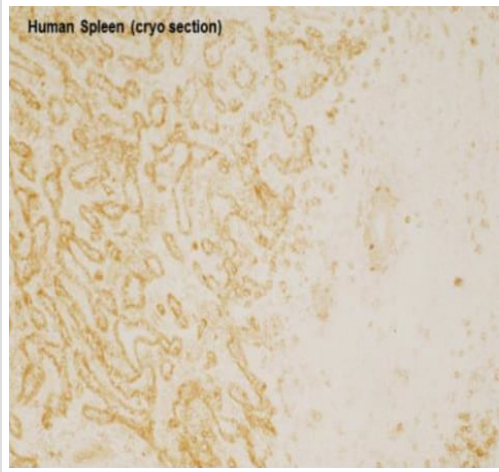
Contains 7 Ig-like C2-type (immunoglobulin-like) domains.

Contains 1 protein kinase domain.

### Cellular localization

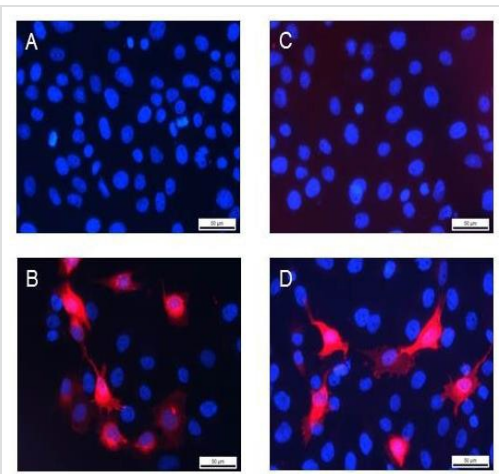
Membrane.

## Images



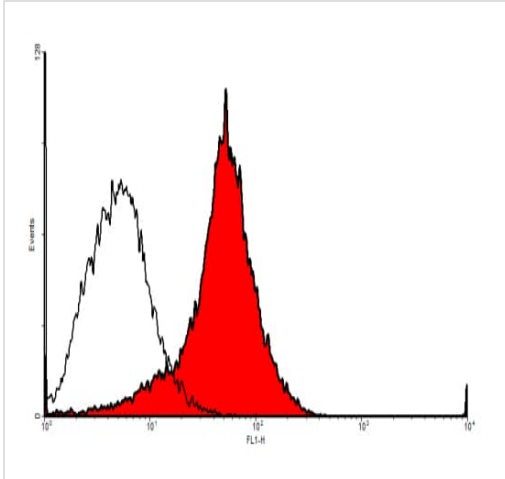
Immunohistochemistry (Frozen sections) - Anti-VEGF Receptor 3 antibody (ab10284)

Immunohistochemistry (Frozen sections) analysis of human spleen tissue labelling VEGF Receptor 3 with ab10284.



Immunocytochemistry/ Immunofluorescence - Anti-VEGF Receptor 3 antibody (ab10284)

Immunocytochemistry/Immunofluorescence analysis of human VEGF Receptor 3 transfected MG63 cells labelling VEGF Receptor 3 (red) with ab10284 (D). A and C are negative controls with secondary antibody only. B uses a monoclonal antibody specific for VEGF Receptor 3.



Flow Cytometry analysis of human dermal lymphatic endothelial cells (HDLEC) labelling VEGF Receptor 3 with ab10284.

Flow Cytometry - Anti-VEGF Receptor 3 antibody (ab10284)

**Please note:** All products are "FOR RESEARCH USE ONLY. NOT FOR USE IN DIAGNOSTIC PROCEDURES"

### Our Abpromise to you: Quality guaranteed and expert technical support

- Replacement or refund for products not performing as stated on the datasheet
- Valid for 12 months from date of delivery
- Response to your inquiry within 24 hours
- We provide support in Chinese, English, French, German, Japanese and Spanish
- Extensive multi-media technical resources to help you
- We investigate all quality concerns to ensure our products perform to the highest standards

If the product does not perform as described on this datasheet, we will offer a refund or replacement. For full details of the Abpromise, please visit <https://www.abcam.com/abpromise> or contact our technical team.

### Terms and conditions

- Guarantee only valid for products bought direct from Abcam or one of our authorized distributors