

## Product datasheet

# Anti-VEGF Receptor 3 antibody ab27278

★★★★☆ [8 Abreviews](#) [44 References](#) [4 Images](#)

### Overview

---

<b>Product name</b>	Anti-VEGF Receptor 3 antibody
<b>Description</b>	Rabbit polyclonal to VEGF Receptor 3
<b>Host species</b>	Rabbit
<b>Tested applications</b>	<b>Suitable for:</b> ICC/IF, WB, IHC-P, IHC - Wholemout
<b>Species reactivity</b>	<b>Reacts with:</b> Mouse, Rat, Human
<b>Immunogen</b>	Synthetic peptide within Human VEGF Receptor 3 aa 1250-1350. The exact sequence is proprietary. Database link: <a href="#">P35916</a>
<b>Positive control</b>	IHC-P: Human placenta tissue. ICC/IF: HeLa cells. WB: Hey cell lysate.
<b>General notes</b>	<b>This product is FOR RESEARCH USE ONLY. For commercial use, please contact <a href="mailto:partnerships@abcam.com">partnerships@abcam.com</a>.</b>

The Life Science industry has been in the grips of a reproducibility crisis for a number of years. Abcam is leading the way in addressing this with our range of recombinant monoclonal antibodies and knockout edited cell lines for gold-standard validation. Please check that this product meets your needs before purchasing.

If you have any questions, special requirements or concerns, please send us an inquiry and/or contact our Support team ahead of purchase. Recommended alternatives for this product can be found below, along with publications, customer reviews and Q&As

### Properties

---

<b>Form</b>	Liquid
<b>Storage instructions</b>	Shipped at 4°C. Upon delivery aliquot and store at -20°C. Avoid freeze / thaw cycles.
<b>Storage buffer</b>	pH: 7.60 Preservative: 0.1% Sodium azide Constituents: PBS, 1% BSA
<b>Purity</b>	Immunogen affinity purified
<b>Clonality</b>	Polyclonal
<b>Isotype</b>	IgG

## Applications

### The Abpromise guarantee

Our **Abpromise guarantee** covers the use of ab27278 in the following tested applications.

The application notes include recommended starting dilutions; optimal dilutions/concentrations should be determined by the end user.

Application	Abreviews	Notes
ICC/IF		Use a concentration of 1 µg/ml.
WB	★★★★★ (1)	Use at an assay dependent concentration. Predicted molecular weight: 146 kDa.
IHC-P	★★★★☆ (5)	1/100. Perform heat mediated antigen retrieval before commencing with IHC staining protocol.
IHC - Wholemount	★★★★☆ (1)	Use at an assay dependent concentration.

## Target

### Function

Receptor for VEGFC. Has a tyrosine-protein kinase activity.

### Tissue specificity

Placenta, lung, heart, and kidney, does not seem to be expressed in pancreas and brain.

### Involvement in disease

Defects in FLT4 are the cause of lymphedema hereditary type 1A (LMPH1A) [MIM:153100]; also known as Nonne-Milroy lymphedema or Milroy disease. Hereditary lymphedema is a chronic disabling condition which results in swelling of the extremities due to altered lymphatic flow. Patients with lymphedema suffer from recurrent local infections and physical impairment. Note=Defects in FLT4 are found in juvenile hemangioma. Juvenile hemangiomas are the most common tumors of infancy, occurring as many as 10% of all births. These benign vascular lesions enlarge rapidly during the first year of life by hyperplasia of endothelial cells and attendant pericytes, and then spontaneously involute over a period of years, leaving loose fibrofatty tissue.

### Sequence similarities

Belongs to the protein kinase superfamily. Tyr protein kinase family. CSF-1/PDGF receptor subfamily.

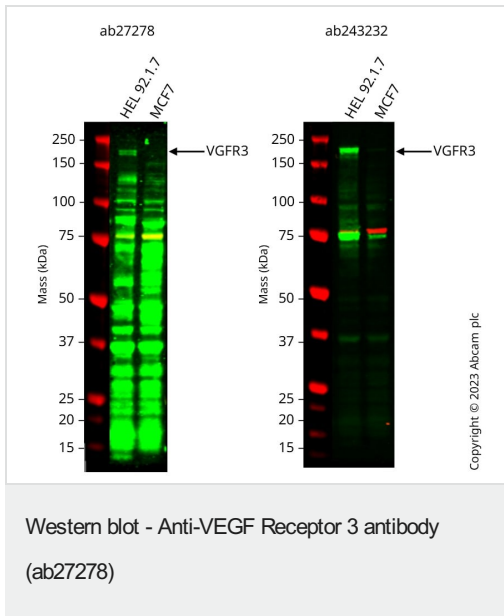
Contains 7 Ig-like C2-type (immunoglobulin-like) domains.

Contains 1 protein kinase domain.

### Cellular localization

Membrane.

## Images



**All lanes** : Anti-VEGF Receptor 3 antibody (ab27278) at 1/1000 dilution

**Lane 1** : HEL 92.1.7 cell lysate

**Lane 2** : MCF7 cell lysate

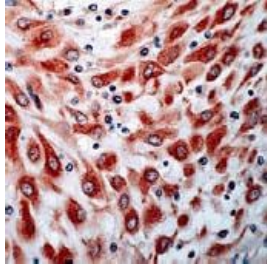
Lysates/proteins at 20 µg per lane.

Performed under reducing conditions.

**Predicted band size:** 146 kDa

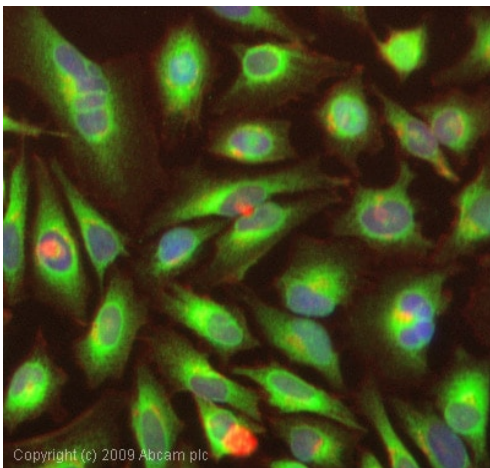
**Observed band size:** 200 kDa

Anti-FLT4 antibody (ab27278) staining at 1/1000 dilution, shown in green; Mouse anti-CANX [CANX/1543] ([ab238078](#)) loading control staining at 1/20000 dilution, shown in red. In Western blot, ab27278 was shown to bind specifically to FLT4 but with several non-specific bands. We recommend [ab243232](#) for Western blot. First, samples were run on an SDS-PAGE gel then transferred onto a nitrocellulose membrane. Membranes were blocked in 3 % milk in TBS-0.1 % Tween® 20 (TBS-T) before incubation with primary antibodies overnight at 4 °C. Blots were washed four times in TBS-T, incubated with secondary antibodies for 1 h at room temperature, washed again four times then imaged. Secondary antibodies used were Goat anti-Rabbit IgG H&L 800CW and Goat anti-Mouse IgG H&L 680RD at 1/20000 dilution.



Immunohistochemistry (Formalin/PFA-fixed paraffin-embedded sections) - Anti-VEGF Receptor 3 antibody (ab27278)

Ab27278 at a dilution of 1/100, staining formalin fixed paraffin embedded Flt4 in human placenta by Immunohistochemistry.



Immunocytochemistry/ Immunofluorescence - Anti-VEGF Receptor 3 antibody (ab27278)

ICC/IF image of ab27278 stained HeLa cells. The cells were 4% PFA fixed (10 min) and then incubated in 1%BSA / 10% normal goat serum / 0.3M glycine in 0.1% PBS-Tween for 1h to permeabilise the cells and block non-specific protein-protein interactions. The cells were then incubated with the antibody (ab27278, 1µg/ml) overnight at +4°C. The secondary antibody (green) was Alexa Fluor® 488 goat anti-rabbit IgG (H+L) used at a 1/1000 dilution for 1h. Alexa Fluor® 594 WGA was used to label plasma membranes (red) at a 1/200 dilution for 1h. DAPI was used to stain the cell nuclei (blue) at a concentration of 1.43µM.



Western blot - Anti-VEGF Receptor 3 antibody (ab27278)

Anti-VEGF Receptor 3 antibody (ab27278) at 1/50 dilution

**Predicted band size:** 146 kDa

**Observed band size:** 170,200 kDa

Hey cell lysate (50µg/lane) was used. The antibody was diluted at 1:50 for 2 hours at room temperature. Hey cell lysate (50µg/lane) was used. The antibody was diluted at 1:50 for 2 hours at room temperature. The protein is heavily glycosylated and this might explain the increase in MW above the predicted MW as well as the multiple bands.

**Please note:** All products are "FOR RESEARCH USE ONLY. NOT FOR USE IN DIAGNOSTIC PROCEDURES"

### **Our Abpromise to you: Quality guaranteed and expert technical support**

---

- Replacement or refund for products not performing as stated on the datasheet
- Valid for 12 months from date of delivery
- Response to your inquiry within 24 hours
  
- We provide support in Chinese, English, French, German, Japanese and Spanish
- Extensive multi-media technical resources to help you
- We investigate all quality concerns to ensure our products perform to the highest standards

If the product does not perform as described on this datasheet, we will offer a refund or replacement. For full details of the Abpromise, please visit <https://www.abcam.com/abpromise> or contact our technical team.

### **Terms and conditions**

---

- Guarantee only valid for products bought direct from Abcam or one of our authorized distributors