


## Product datasheet

### Anti-VGluT1 antibody ab77822

★★★★★ [2 Abreviews](#) [21 References](#) [1 Image](#)

#### Overview

<b>Product name</b>	Anti-VGluT1 antibody
<b>Description</b>	Rabbit polyclonal to VGluT1
<b>Host species</b>	Rabbit
<b>Specificity</b>	Due to immunogen homology, the antibody may detect VGluT2 (100%) and VGluT3(95%).
<b>Tested applications</b>	<b>Suitable for:</b> WB
<b>Species reactivity</b>	<b>Reacts with:</b> Rat <b>Predicted to work with:</b> Mouse, Cow, Pigeon, Human, Zebrafish 
<b>Immunogen</b>	Synthetic peptide corresponding to Rat VGluT1 aa 150-250 conjugated to keyhole limpet haemocyanin. (Peptide available as <a href="#">ab93078</a> )
<b>General notes</b>	<p>The Life Science industry has been in the grips of a reproducibility crisis for a number of years. Abcam is leading the way in addressing this with our range of recombinant monoclonal antibodies and knockout edited cell lines for gold-standard validation. Please check that this product meets your needs before purchasing.</p> <p>If you have any questions, special requirements or concerns, please send us an inquiry and/or contact our Support team ahead of purchase. Recommended alternatives for this product can be found below, along with publications, customer reviews and Q&amp;As</p>

#### Properties

<b>Form</b>	Liquid
<b>Storage instructions</b>	Shipped at 4°C. Store at +4°C short term (1-2 weeks). Upon delivery aliquot. Store at -20°C or -80°C. Avoid freeze / thaw cycle.
<b>Storage buffer</b>	pH: 7.40 Preservative: 0.02% Sodium azide Constituent: PBS  Batches of this product that have a concentration < 1mg/ml may have BSA added as a stabilising agent. If you would like information about the formulation of a specific lot, please contact our scientific support team who will be happy to help.
<b>Purity</b>	Immunogen affinity purified

<b>Clonality</b>	Polyclonal
<b>Isotype</b>	IgG

## Applications

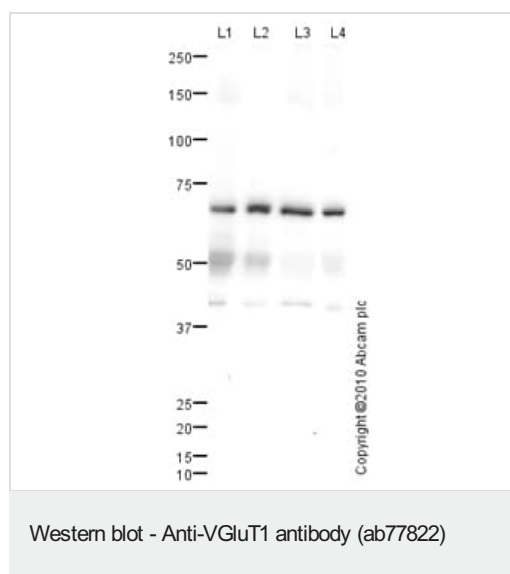
**The Abpromise guarantee** Our **Abpromise guarantee** covers the use of ab77822 in the following tested applications. The application notes include recommended starting dilutions; optimal dilutions/concentrations should be determined by the end user.

Application	Abreviews	Notes
<b>WB</b>	★★★★★ (1)	Use a concentration of 1 µg/ml. Detects a band of approximately 67 kDa (predicted molecular weight: 62 kDa).

## Target

<b>Function</b>	Mediates the uptake of glutamate into synaptic vesicles at presynaptic nerve terminals of excitatory neural cells. May also mediate the transport of inorganic phosphate.
<b>Tissue specificity</b>	Expressed in several regions of the brain including amygdala, cerebellum, cerebral cortex, hippocampus, frontal lobe, medulla, occipital lobe, putamen and temporal lobe.
<b>Sequence similarities</b>	Belongs to the major facilitator superfamily. Sodium/anion cotransporter family. VGLUT subfamily.
<b>Cellular localization</b>	Cytoplasmic vesicle, secretory vesicle, synaptic vesicle membrane. Membrane. Cell junction, synapse, synaptosome.

## Images



**All lanes :** Anti-VGluT1 antibody (ab77822) at 1 µg/ml

**Lane 1 :** Rat Brain Tissue Lysate

**Lane 2 :** Rat Cerebellum Tissue Lysate

**Lane 3 :** Rat Cortex Tissue Lysate

**Lane 4 :** Rat Forebrain

Lysates/proteins at 10 µg per lane.

### Secondary

**All lanes :** Goat polyclonal to Rabbit IgG - H&L - Pre-Adsorbed (HRP) at 1/3000 dilution

Developed using the ECL technique.

Performed under reducing conditions.

**Predicted band size:** 62 kDa

**Observed band size:** 67 kDa

**Additional bands at:** 41 kDa, 50 kDa. We are unsure as to the identity of these extra bands.

**Exposure time:** 3 minutes

Abcam welcomes customer feedback and would appreciate any comments regarding this product and the data presented above.

**Please note:** All products are "FOR RESEARCH USE ONLY. NOT FOR USE IN DIAGNOSTIC PROCEDURES"

### **Our Abpromise to you: Quality guaranteed and expert technical support**

---

- Replacement or refund for products not performing as stated on the datasheet
- Valid for 12 months from date of delivery
- Response to your inquiry within 24 hours
- We provide support in Chinese, English, French, German, Japanese and Spanish
- Extensive multi-media technical resources to help you
- We investigate all quality concerns to ensure our products perform to the highest standards

If the product does not perform as described on this datasheet, we will offer a refund or replacement. For full details of the Abpromise, please visit <https://www.abcam.com/abpromise> or contact our technical team.

### **Terms and conditions**

---

- Guarantee only valid for products bought direct from Abcam or one of our authorized distributors