


Product datasheet

Anti-Vimentin antibody ab188499

[4 References](#) [4 Images](#)

Overview

Product name	Anti-Vimentin antibody
Description	Rabbit polyclonal to Vimentin
Host species	Rabbit
Tested applications	Suitable for: ICC/IF, WB
Species reactivity	Reacts with: Mouse, Human Predicted to work with: Chimpanzee, Mammals, Cynomolgus monkey 
Immunogen	Recombinant full length protein corresponding to Human Vimentin aa 1 to the C-terminus. (Purified from E. coli). Database link: P08670 Run BLAST with Run BLAST with
Positive control	WB: HeLa cell extract; HeLa, SH-SY5Y, HEK-293 and NIH/3T3 whole cell lysates. ICC/IF: HeLa cells.
General notes	<p>The Life Science industry has been in the grips of a reproducibility crisis for a number of years. Abcam is leading the way in addressing this with our range of recombinant monoclonal antibodies and knockout edited cell lines for gold-standard validation. Please check that this product meets your needs before purchasing.</p> <p>If you have any questions, special requirements or concerns, please send us an inquiry and/or contact our Support team ahead of purchase. Recommended alternatives for this product can be found below, along with publications, customer reviews and Q&As</p>

Properties

Form	Liquid
Storage instructions	Shipped at 4°C. Store at +4°C short term (1-2 weeks). Upon delivery aliquot. Store at -20°C long term. Avoid freeze / thaw cycle.
Storage buffer	Preservative: 0.07% Sodium azide
Purity	Whole antiserum
Clonality	Polyclonal
Isotype	IgG

Applications

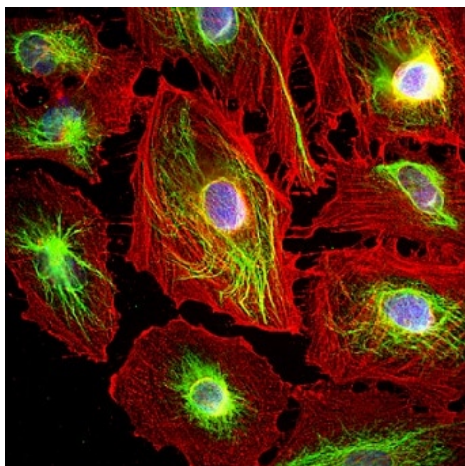
The Abpromise guarantee Our **Abpromise guarantee** covers the use of ab188499 in the following tested applications. The application notes include recommended starting dilutions; optimal dilutions/concentrations should be determined by the end user.

Application	Abreviews	Notes
ICC/IF		1/5000.
WB		1/10000. Detects a band of approximately 55 kDa (predicted molecular weight: 53 kDa).

Target

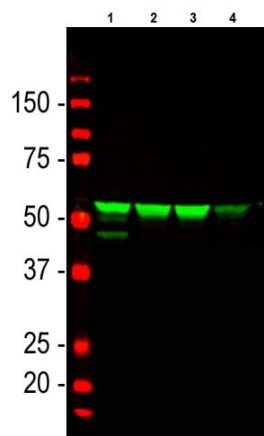
Function	Vimentins are class-III intermediate filaments found in various non-epithelial cells, especially mesenchymal cells. Vimentin is attached to the nucleus, endoplasmic reticulum, and mitochondria, either laterally or terminally. Involved with LARP6 in the stabilization of type I collagen mRNAs for CO1A1 and CO1A2.
Tissue specificity	Highly expressed in fibroblasts, some expression in T- and B-lymphocytes, and little or no expression in Burkitt's lymphoma cell lines. Expressed in many hormone-independent mammary carcinoma cell lines.
Involvement in disease	Cataract 30
Sequence similarities	Belongs to the intermediate filament family.
Domain	The central alpha-helical coiled-coil rod region mediates elementary homodimerization. The [IL]-x-C-x-x-[DE] motif is a proposed target motif for cysteine S-nitrosylation mediated by the iNOS-S100A8/A9 transnitrosylase complex.
Post-translational modifications	Filament disassembly during mitosis is promoted by phosphorylation at Ser-55 as well as by nestin (By similarity). One of the most prominent phosphoproteins in various cells of mesenchymal origin. Phosphorylation is enhanced during cell division, at which time vimentin filaments are significantly reorganized. Phosphorylation by PKN1 inhibits the formation of filaments. Phosphorylated at Ser-56 by CDK5 during neutrophil secretion in the cytoplasm. Phosphorylated by STK33. O-glycosylated during cytokinesis at sites identical or close to phosphorylation sites, this interferes with the phosphorylation status. S-nitrosylation is induced by interferon-gamma and oxidatively-modified low-density lipoprotein (LDL(ox)) possibly implicating the iNOS-S100A8/9 transnitrosylase complex.
Cellular localization	Cytoplasm.
Form	Vimentin is found in connective tissue and in the cytoskeleton.

Images



Immunocytochemistry/ Immunofluorescence - Anti-Vimentin antibody (ab188499)

HeLa (human epithelial cell line from cervix adenocarcinoma) cells stained for Vimentin (green) using ab188499 at 1/5000 dilution in ICC/IF. Counterstained with mouse mAb to Actin at 1/500 dilution (red). Blue is DAPI staining of nuclear DNA.



Western blot - Anti-Vimentin antibody (ab188499)

All lanes : Anti-Vimentin antibody (ab188499) at 1/5000 dilution

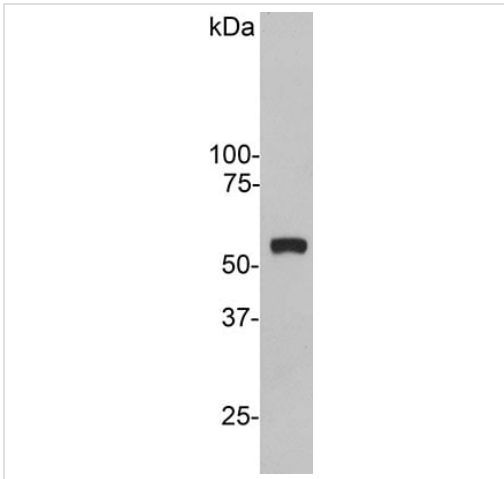
Lane 1 : HeLa (human epithelial cell line from cervix adenocarcinoma) whole cell lysate

Lane 2 : SH-SY5Y (human neuroblastoma cell line from bone marrow) whole cell lysate

Lane 3 : HEK-293 (human epithelial cell line from embryonic kidney) whole cell lysate

Lane 4 : NIH/3T3 (mouse embryo fibroblast cell line) whole cell lysate

Predicted band size: 53 kDa

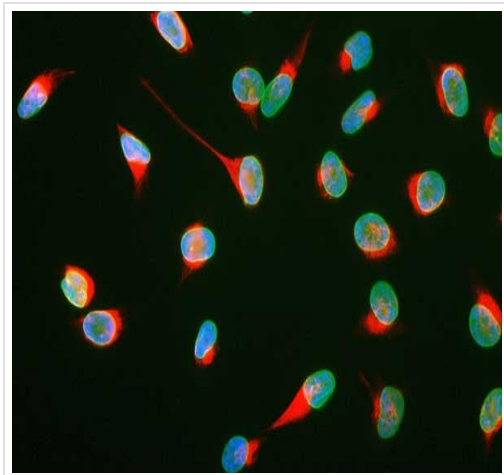


Western blot - Anti-Vimentin antibody (ab188499)

Anti-Vimentin antibody (ab188499) at 1/10000 dilution + HeLa cell extract

Developed using the ECL technique.

Predicted band size: 53 kDa



Immunocytochemistry/ Immunofluorescence - Anti-Vimentin antibody (ab188499)

Immunofluorescent analysis of HeLa cells labeling Vimentin with ab188499 at 1/5000 dilution (red). Counter stained with a monoclonal antibody to Lamin A + C (green). DNA is stained blue.

Please note: All products are "FOR RESEARCH USE ONLY. NOT FOR USE IN DIAGNOSTIC PROCEDURES"

Our Abpromise to you: Quality guaranteed and expert technical support

- Replacement or refund for products not performing as stated on the datasheet
- Valid for 12 months from date of delivery
- Response to your inquiry within 24 hours

- We provide support in Chinese, English, French, German, Japanese and Spanish
- Extensive multi-media technical resources to help you
- We investigate all quality concerns to ensure our products perform to the highest standards

If the product does not perform as described on this datasheet, we will offer a refund or replacement. For full details of the Abpromise, please visit <https://www.abcam.com/abpromise> or contact our technical team.

Terms and conditions

- Guarantee only valid for products bought direct from Abcam or one of our authorized distributors