

Product datasheet

violetFluor™ 450 Anti-CD11b antibody [M1/70] ab242266

[2 Images](#)

Overview

Product name	violetFluor™ 450 Anti-CD11b antibody [M1/70]
Description	violetFluor™ 450 Rat monoclonal [M1/70] to CD11b
Host species	Rat
Conjugation	violetFluor™ 450. Ex: 405nm, Em: 450nm
Tested applications	Suitable for: Flow Cyt
Species reactivity	Reacts with: Mouse
Immunogen	The details of the immunogen for this antibody are not available.
Positive control	Flow Cyt: C57Bl/6 bone marrow cells.
General notes	<p>The Life Science industry has been in the grips of a reproducibility crisis for a number of years. Abcam is leading the way in addressing this with our range of recombinant monoclonal antibodies and knockout edited cell lines for gold-standard validation. Please check that this product meets your needs before purchasing.</p> <p>If you have any questions, special requirements or concerns, please send us an inquiry and/or contact our Support team ahead of purchase. Recommended alternatives for this product can be found below, along with publications, customer reviews and Q&As</p>

Properties

Form	Liquid
Storage instructions	Shipped at 4°C. Store at +4°C. Store In the Dark.
Storage buffer	pH: 7.20 Preservative: 0.09% Sodium azide Constituents: 0.12% Monobasic dihydrogen sodium phosphate, 0.87% Sodium chloride, 0.1% Gelatin
Purity	Affinity purified
Purification notes	Purified from TCS.
Clonality	Monoclonal
Clone number	M1/70

Isotype	IgG2b
Light chain type	kappa

Applications

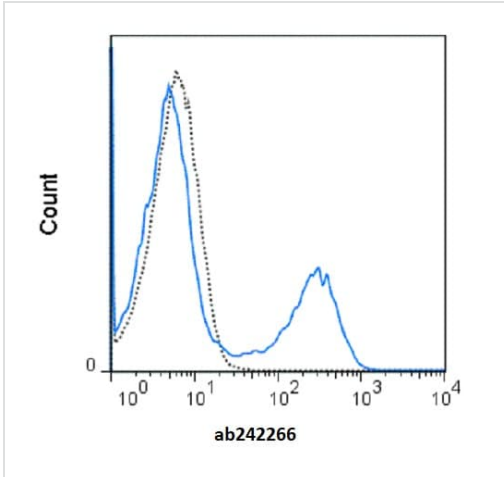
The Abpromise guarantee Our **Abpromise guarantee** covers the use of ab242266 in the following tested applications. The application notes include recommended starting dilutions; optimal dilutions/concentrations should be determined by the end user.

Application	Abreviews	Notes
Flow Cyt		Use at an assay dependent concentration. 0.125 µg: The amount of antibody required for optimal staining of a cell sample should be determined empirically in your system.

Target

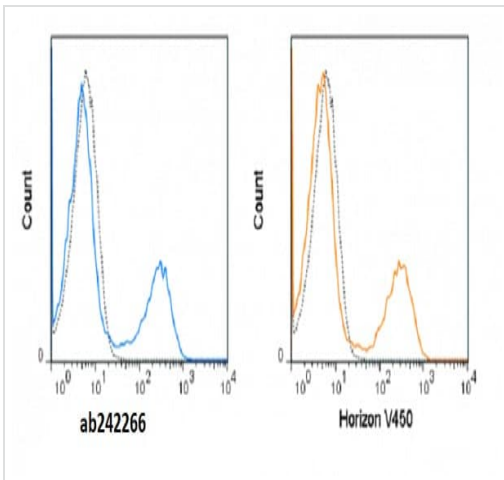
Function	Integrin alpha-M/beta-2 is implicated in various adhesive interactions of monocytes, macrophages and granulocytes as well as in mediating the uptake of complement-coated particles. It is identical with CR-3, the receptor for the iC3b fragment of the third complement component. It probably recognizes the R-G-D peptide in C3b. Integrin alpha-M/beta-2 is also a receptor for fibrinogen, factor X and ICAM1. It recognizes P1 and P2 peptides of fibrinogen gamma chain.
Tissue specificity	Predominantly expressed in monocytes and granulocytes.
Involvement in disease	Genetic variations in ITGAM has been associated with susceptibility to systemic lupus erythematosus type 6 (SLEB6) [MIM:609939]. Systemic lupus erythematosus (SLE) is a chronic, inflammatory and often febrile multisystemic disorder of connective tissue. It affects principally the skin, joints, kidneys and serosal membranes. It is thought to represent a failure of the regulatory mechanisms of the autoimmune system.
Sequence similarities	Belongs to the integrin alpha chain family. Contains 7 FG-GAP repeats. Contains 1 VWFA domain.
Domain	The integrin I-domain (insert) is a VWFA domain. Integrins with I-domains do not undergo protease cleavage.
Cellular localization	Membrane.

Images



Flow Cytometric analysis of C57Bl/6 bone marrow cells staining CD11b using 0.125 µg ab242266 (solid line) or 0.125 µg violetFluor™ 450 Rat IgG2b isotype control (dashed line).

Flow Cytometry - violetFluor™ 450 Anti-CD11b antibody [M1/70] (ab242266)



Flow Cytometric analysis of C57Bl/6 bone marrow cells staining CD11b using ab242266 (solid line, left panel) or Horizon V450 (solid line, right panel).

Flow Cytometry - violetFluor™ 450 Anti-CD11b antibody [M1/70] (ab242266)

Please note: All products are "FOR RESEARCH USE ONLY. NOT FOR USE IN DIAGNOSTIC PROCEDURES"

Our Promise to you: Quality guaranteed and expert technical support

- Replacement or refund for products not performing as stated on the datasheet
- Valid for 12 months from date of delivery

- Response to your inquiry within 24 hours
- We provide support in Chinese, English, French, German, Japanese and Spanish
- Extensive multi-media technical resources to help you
- We investigate all quality concerns to ensure our products perform to the highest standards

If the product does not perform as described on this datasheet, we will offer a refund or replacement. For full details of the Abpromise, please visit <https://www.abcam.com/abpromise> or contact our technical team.

Terms and conditions

- Guarantee only valid for products bought direct from Abcam or one of our authorized distributors