

Product datasheet

violetFluor™ 450 Anti-F4/80 antibody [BM8.1] ab242258

[1 Image](#)

Overview

| | |
|----------------------------|---|
| Product name | violetFluor™ 450 Anti-F4/80 antibody [BM8.1] |
| Description | violetFluor™ 450 Rat monoclonal [BM8.1] to F4/80 |
| Host species | Rat |
| Conjugation | violetFluor™ 450. Ex: 405nm, Em: 450nm |
| Tested applications | Suitable for: Flow Cyt |
| Species reactivity | Reacts with: Mouse |
| Immunogen | The details of the immunogen for this antibody are not available. |
| Positive control | Flow Cyt: C57Bl/6 bone marrow cells. |
| General notes | <p>The Life Science industry has been in the grips of a reproducibility crisis for a number of years. Abcam is leading the way in addressing this with our range of recombinant monoclonal antibodies and knockout edited cell lines for gold-standard validation. Please check that this product meets your needs before purchasing.</p> <p>If you have any questions, special requirements or concerns, please send us an inquiry and/or contact our Support team ahead of purchase. Recommended alternatives for this product can be found below, along with publications, customer reviews and Q&As</p> |

Properties

| | |
|-----------------------------|---|
| Form | Liquid |
| Storage instructions | Shipped at 4°C. Store at +4°C. Store In the Dark. |
| Storage buffer | <p>pH: 7.20</p> <p>Preservative: 0.09% Sodium azide</p> <p>Constituents: 0.12% Monobasic dihydrogen sodium phosphate, 0.87% Sodium chloride, 0.1% Gelatin</p> |
| Purity | Affinity purified |
| Purification notes | Purified from TCS. |
| Clonality | Monoclonal |
| Clone number | BM8.1 |
| Isotype | IgG2b |
| Light chain type | kappa |

Applications

The Abpromise guarantee

Our **Abpromise guarantee** covers the use of ab242258 in the following tested applications.

The application notes include recommended starting dilutions; optimal dilutions/concentrations should be determined by the end user.

| Application | Abreviews | Notes |
|-------------|-----------|---|
| Flow Cyt | | Use at an assay dependent concentration. We recommend titrating the antibody under your specific conditions to determine the optimal concentration of antibody needed in your experimental system. |

Target

Function

Orphan receptor involved in cell adhesion and probably in cell-cell interactions specifically involving cells of the immune system. May play a role in regulatory T-cells (Treg) development.

Tissue specificity

Expression is restricted to eosinophils.

Sequence similarities

Belongs to the G-protein coupled receptor 2 family. Adhesion G-protein coupled receptor (ADGR) subfamily.

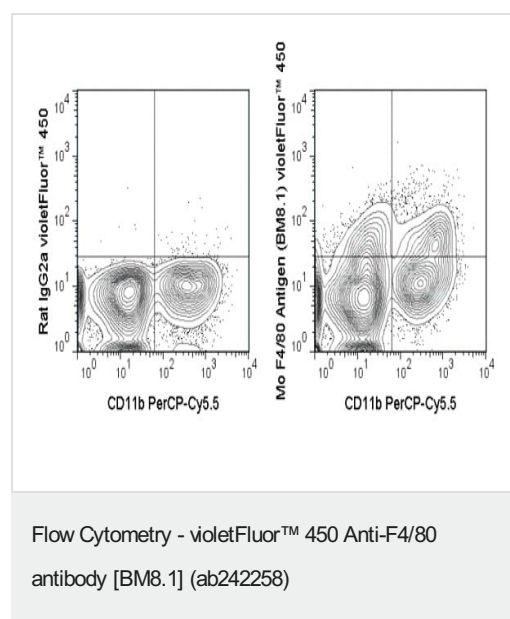
Contains 6 EGF-like domains.

Contains 1 GPS domain.

Cellular localization

Cell membrane.

Images



Flow Cytometric analysis of C57Bl/6 bone marrow cells staining F4/80 using PerCP-Cy5.5 Anti-Mouse CD11b and 0.5 µg ab242258 (right panel) or 0.5 µg violet-Fluor™ 450 Rat IgG2b isotype control (left panel).

Please note: All products are "FOR RESEARCH USE ONLY. NOT FOR USE IN DIAGNOSTIC PROCEDURES"

Our Abpromise to you: Quality guaranteed and expert technical support

- Replacement or refund for products not performing as stated on the datasheet
- Valid for 12 months from date of delivery
- Response to your inquiry within 24 hours

- We provide support in Chinese, English, French, German, Japanese and Spanish
- Extensive multi-media technical resources to help you
- We investigate all quality concerns to ensure our products perform to the highest standards

If the product does not perform as described on this datasheet, we will offer a refund or replacement. For full details of the Abpromise, please visit <https://www.abcam.com/abpromise> or contact our technical team.

Terms and conditions

- Guarantee only valid for products bought direct from Abcam or one of our authorized distributors