

Product datasheet

Anti-Vitellogenin antibody ab36877

2 Images

Overview

Product name	Anti-Vitellogenin antibody
Description	Rabbit polyclonal to Vitellogenin
Host species	Rabbit
Tested applications	Suitable for: ELISA, WB
Species reactivity	Reacts with: Carp, Tilapia
Immunogen	Recombinant full length protein corresponding to Vitellogenin. Vitellogenin purified from plasma of 17 β -estradiol treated sea bream.

General notes

The Life Science industry has been in the grips of a reproducibility crisis for a number of years. Abcam is leading the way in addressing this with our range of recombinant monoclonal antibodies and knockout edited cell lines for gold-standard validation. Please check that this product meets your needs before purchasing.

If you have any questions, special requirements or concerns, please send us an inquiry and/or contact our Support team ahead of purchase. Recommended alternatives for this product can be found below, along with publications, customer reviews and Q&As

Properties

Form	Liquid
Storage instructions	Shipped at 4°C. Store at +4°C short term (1-2 weeks). Store at -20°C or -80°C. Avoid freeze / thaw cycle.
Storage buffer	pH: 7.40 Preservative: 0.1% Sodium azide Constituents: 1% BSA, 1.64% Sodium phosphate
Purity	Protein G purified
Clonality	Polyclonal
Isotype	IgG

Applications

The Abpromise guarantee Our **Abpromise guarantee** covers the use of ab36877 in the following tested applications.

The application notes include recommended starting dilutions; optimal dilutions/concentrations should be determined by the end user.

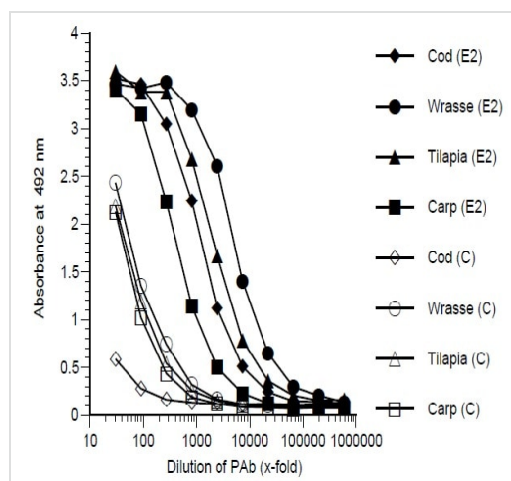
Application	Abreviews	Notes
ELISA		1/200 - 1/3000.
WB		1/200 - 1/3000.

Target

Relevance Vitellogenin (Vg) is an egg yolk precursor protein expressed solely in female fish and is dormant in male fish, but in the presence of estrogenic EDCs, male fish can express the Vg gene but in a dose dependent manner. The use of Vg gene expression in male fish can be used as a molecular marker of exposure to estrogenic Endocrine Disrupting Chemicals (EDCs).

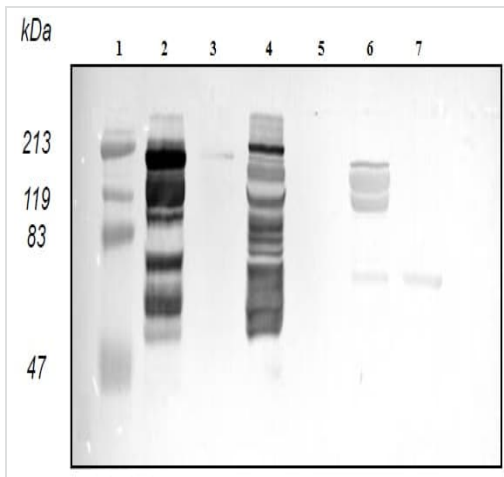
Cellular localization Secreted

Images



Coating: Plasma (diluted 1:1000) from 17 beta-estradiol treated (E2) or control (C) fish. Primary antibody: PO-2

ELISA - Anti-Vitellogenin antibody (ab36877)



Western blot - Anti-Vitellogenin antibody (ab36877)

All lanes : Anti-Vitellogenin antibody (ab36877) at 1/3000 dilution

- Lane 1 :** MW standard
- Lane 2 :** Wrasse (E2)
- Lane 3 :** Wrasse (C)
- Lane 4 :** Tilapia (E2)
- Lane 5 :** Tilapia (C)
- Lane 6 :** Carp (E2)
- Lane 7 :** Carp (C)

Samples: Plasma (1:200, 10 µl/well) from 17 beta-estradiol treated (E2) or control (C) fish.

Please note: All products are "FOR RESEARCH USE ONLY. NOT FOR USE IN DIAGNOSTIC PROCEDURES"

Our Abpromise to you: Quality guaranteed and expert technical support

- Replacement or refund for products not performing as stated on the datasheet
- Valid for 12 months from date of delivery
- Response to your inquiry within 24 hours
- We provide support in Chinese, English, French, German, Japanese and Spanish
- Extensive multi-media technical resources to help you
- We investigate all quality concerns to ensure our products perform to the highest standards

If the product does not perform as described on this datasheet, we will offer a refund or replacement. For full details of the Abpromise, please visit <https://www.abcam.com/abpromise> or contact our technical team.

Terms and conditions

- Guarantee only valid for products bought direct from Abcam or one of our authorized distributors