



Product datasheet

Anti-Vitronectin/S-Protein antibody [1G11E8] ab201981

[1 References](#) [5 Images](#)

Overview

Product name	Anti-Vitronectin/S-Protein antibody [1G11E8]
Description	Mouse monoclonal [1G11E8] to Vitronectin/S-Protein
Host species	Mouse
Tested applications	Suitable for: WB, Flow Cyt, IHC-P
Species reactivity	Reacts with: Human
Immunogen	Recombinant fragment corresponding to Human Vitronectin/S-Protein aa 1-200. Recombinant fragment expressed in E coli Database link: P04004
	 Run BLAST with  Run BLAST with
Positive control	Human VTN (AA: 20-199) recombinant protein, VTN (AA: 20-199)-hlgGfc transfected HEK293 cell lysate, Hela cells, Human cervical cancer tissues, Human liver cancer tissues
General notes	<p>The Life Science industry has been in the grips of a reproducibility crisis for a number of years. Abcam is leading the way in addressing this with our range of recombinant monoclonal antibodies and knockout edited cell lines for gold-standard validation. Please check that this product meets your needs before purchasing.</p> <p>If you have any questions, special requirements or concerns, please send us an inquiry and/or contact our Support team ahead of purchase. Recommended alternatives for this product can be found below, along with publications, customer reviews and Q&As</p>

Properties

Form	Liquid
Storage instructions	Shipped at 4°C. Store at +4°C short term (1-2 weeks). Upon delivery aliquot. Store at -20°C long term. Avoid freeze / thaw cycle.
Storage buffer	Preservative: 0.05% Sodium azide Constituent: 99% PBS
Purity	Protein G purified
Purification notes	Purified from tissue culture supernatant.
Clonality	Monoclonal
Clone number	1G11E8

Applications

The Abpromise guarantee

Our **Abpromise guarantee** covers the use of ab201981 in the following tested applications.

The application notes include recommended starting dilutions; optimal dilutions/concentrations should be determined by the end user.

Application	Abreviews	Notes
WB		1/500 - 1/2000.
Flow Cyt		1/200 - 1/400. ab170192 - Mouse monoclonal IgG2b, is suitable for use as an isotype control with this antibody.
IHC-P		1/200 - 1/1000.

Target

Function

Vitronectin is a cell adhesion and spreading factor found in serum and tissues. Vitronectin interact with glycosaminoglycans and proteoglycans. Is recognized by certain members of the integrin family and serves as a cell-to-substrate adhesion molecule. Inhibitor of the membrane-damaging effect of the terminal cytolytic complement pathway.

Somatomedin-B is a growth hormone-dependent serum factor with protease-inhibiting activity.

Tissue specificity

Plasma.

Sequence similarities

Contains 4 hemopexin repeats.

Contains 1 SMB (somatomedin-B) domain.

Domain

The SMB domain mediates interaction with SERPINE1/PAI1. The heparin-binding domain mediates interaction with insulin.

Post-translational modifications

Sulfated on 2 tyrosine residues.

N- and O-glycosylated.

Phosphorylation on Thr-69 and Thr-76 favors cell adhesion and spreading.

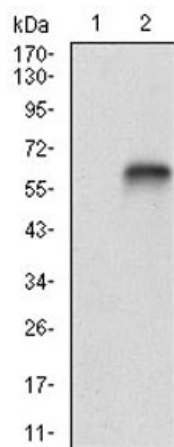
It has been suggested that the active SMB domain may be permitted considerable disulfide bond heterogeneity or variability, thus two alternate disulfide patterns based on 3D structures are described with 1 disulfide bond conserved in both.

Phosphorylation sites are present in the extracellular medium.

Cellular localization

Secreted, extracellular space.

Images

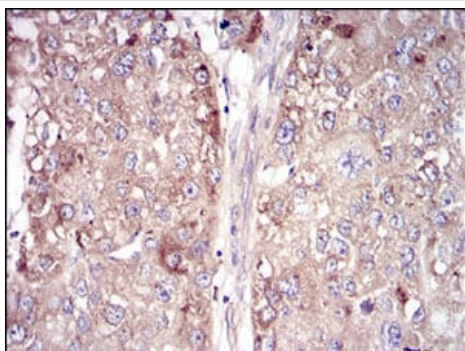


Western blot - Anti-Vitronectin/S-Protein antibody
[1G11E8] (ab201981)

All lanes : Anti-Vitronectin/S-Protein antibody [1G11E8]
(ab201981) at 1/500 dilution

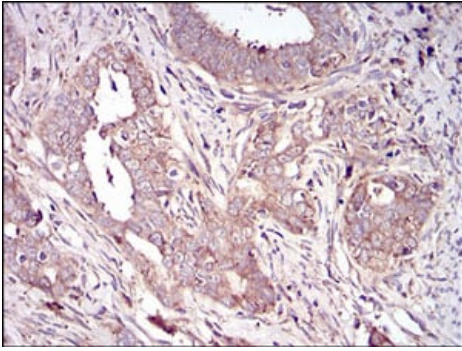
Lane 1 : HEK293 cell lysate

Lane 2 : Vitronectin/S-Protein (AA: 20-199)-hlgGFc transfected
HEK293 cell lysate



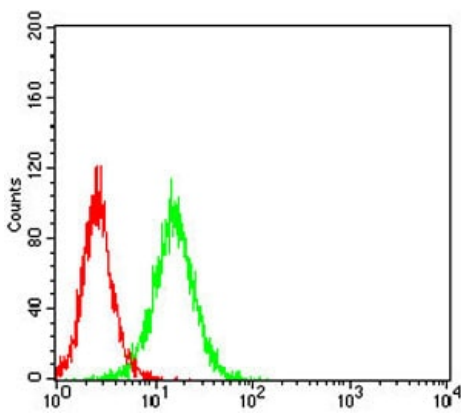
Immunohistochemistry (Formalin/PFA-fixed paraffin-
embedded sections) - Anti-Vitronectin/S-Protein
antibody [1G11E8] (ab201981)

Immunohistochemical analysis of paraffin-embedded Human
liver cancer tissue labeling Vitronectin/S-Protein with ab201981 at
1/200 dilution with DAB staining



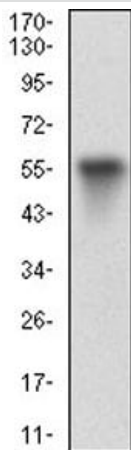
Immunohistochemistry (Formalin/PFA-fixed paraffin-embedded sections) - Anti-Vitronectin/S-Protein antibody [1G11E8] (ab201981)

Immunohistochemical analysis of paraffin-embedded Human cervical cancer tissue labeling Vitronectin/S-Protein with ab201981 at 1/200 dilution with DAB staining.



Flow Cytometry - Anti-Vitronectin/S-Protein antibody [1G11E8] (ab201981)

Flow cytometric analysis of Hela cells labeling Vitronectin/S-Protein using ab201981 at 1/200 dilution (green) and negative control (red).



Western blot - Anti-Vitronectin/S-Protein antibody [1G11E8] (ab201981)

Anti-Vitronectin/S-Protein antibody [1G11E8] (ab201981) at 1/500 dilution + Human Vitronectin/S-Protein (AA: 20-199) recombinant protein

Our Abpromise to you: Quality guaranteed and expert technical support

- Replacement or refund for products not performing as stated on the datasheet
- Valid for 12 months from date of delivery
- Response to your inquiry within 24 hours

- We provide support in Chinese, English, French, German, Japanese and Spanish
- Extensive multi-media technical resources to help you
- We investigate all quality concerns to ensure our products perform to the highest standards

If the product does not perform as described on this datasheet, we will offer a refund or replacement. For full details of the Abpromise, please visit <https://www.abcam.com/abpromise> or contact our technical team.

Terms and conditions

- Guarantee only valid for products bought direct from Abcam or one of our authorized distributors