




Product datasheet

Anti-VMAT2 antibody ab26073

2 Images

Overview

Product name	Anti-VMAT2 antibody
Description	Goat polyclonal to VMAT2
Host species	Goat
Tested applications	Suitable for: IHC-P, WB
Species reactivity	Reacts with: Human Predicted to work with: Mouse, Rat, Cow, Dog, Pig 
Immunogen	Synthetic peptide corresponding to Human VMAT2 aa 502-514 (C terminal). Sequence: C-SYPIGEDEEESD Database link: NP_003045.2  Run BLAST with  Run BLAST with
Positive control	WB: Human adrenal gland tissue lysates.
General notes	<p>The Life Science industry has been in the grips of a reproducibility crisis for a number of years. Abcam is leading the way in addressing this with our range of recombinant monoclonal antibodies and knockout edited cell lines for gold-standard validation. Please check that this product meets your needs before purchasing.</p> <p>If you have any questions, special requirements or concerns, please send us an inquiry and/or contact our Support team ahead of purchase. Recommended alternatives for this product can be found below, along with publications, customer reviews and Q&As</p>

Properties

Form	Liquid
Storage instructions	Store at +4°C short term (1-2 weeks). Aliquot and store at -20°C or -80°C. Avoid repeated freeze / thaw cycles.
Storage buffer	pH: 7.30 Preservative: 0.02% Sodium azide Constituents: Tris buffered saline, 0.5% BSA
Purity	Immunogen affinity purified
Purification notes	Purified from goat serum by ammonium sulphate precipitation followed by antigen affinity

	chromatography using the immunizing peptide.
Clonality	Polyclonal
Isotype	IgG

Applications

The Abpromise guarantee Our **Abpromise guarantee** covers the use of ab26073 in the following tested applications. The application notes include recommended starting dilutions; optimal dilutions/concentrations should be determined by the end user.

Application	Abreviews	Notes
IHC-P		Use a concentration of 6 µg/ml.
WB		Use a concentration of 1 - 3 µg/ml. Detects a band of approximately 50,55 kDa. 1 hour primary incubation is recommended for this product.

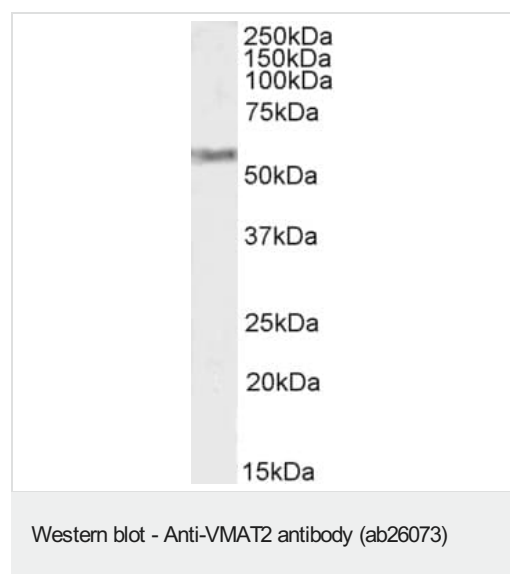
Target

Function Involved in the ATP-dependent vesicular transport of biogenic amine neurotransmitters. Pumps cytosolic monoamines including dopamine, norepinephrine, serotonin, and histamine into synaptic vesicles. Requisite for vesicular amine storage prior to secretion via exocytosis.

Sequence similarities Belongs to the major facilitator superfamily. Vesicular transporter family.

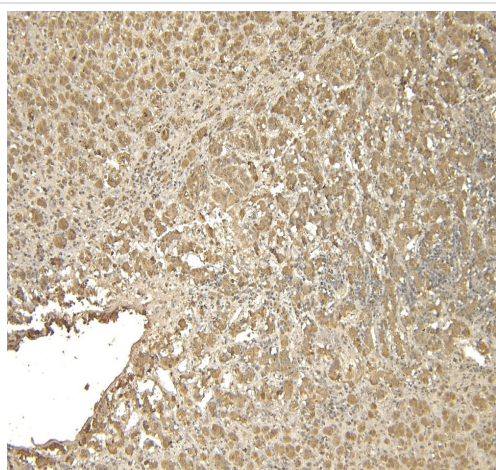
Cellular localization Cytoplasmic vesicle membrane.

Images



Anti-VMAT2 antibody (ab26073) at 2 µg/ml + Human Adrenal Gland lysate at 35 µg

Detected by chemiluminescence.



Immunohistochemistry staining of paraffin embedded Human Adrenal Gland labeling VMAT2 with ab26073 at (6 µg/mL). Heat induced antigen retrieval with citrate buffer pH 6, HRP-staining.

Immunohistochemistry (Formalin/PFA-fixed paraffin-embedded sections) - Anti-VMAT2 antibody (ab26073)

Please note: All products are "FOR RESEARCH USE ONLY. NOT FOR USE IN DIAGNOSTIC PROCEDURES"

Our Abpromise to you: Quality guaranteed and expert technical support

- Replacement or refund for products not performing as stated on the datasheet
- Valid for 12 months from date of delivery
- Response to your inquiry within 24 hours
- We provide support in Chinese, English, French, German, Japanese and Spanish
- Extensive multi-media technical resources to help you
- We investigate all quality concerns to ensure our products perform to the highest standards

If the product does not perform as described on this datasheet, we will offer a refund or replacement. For full details of the Abpromise, please visit <https://www.abcam.com/abpromise> or contact our technical team.

Terms and conditions

- Guarantee only valid for products bought direct from Abcam or one of our authorized distributors