

Anti-VPRBP antibody ab245483

[2 Images](#)

Overview

Product name	Anti-VPRBP antibody
Description	Rabbit polyclonal to VPRBP
Host species	Rabbit
Tested applications	Suitable for: IP, WB
Species reactivity	Reacts with: Mouse, Human
Immunogen	Synthetic peptide within Human VPRBP aa 25-75. The exact sequence is proprietary. (NP_055518.1). Database link: Q9Y4B6
Positive control	WB: HeLa, HEK-293T and NIH/3T3 whole cell lysates. IP: HeLa whole cell lysate.
General notes	<p>The Life Science industry has been in the grips of a reproducibility crisis for a number of years. Abcam is leading the way in addressing this with our range of recombinant monoclonal antibodies and knockout edited cell lines for gold-standard validation. Please check that this product meets your needs before purchasing.</p> <p>If you have any questions, special requirements or concerns, please send us an inquiry and/or contact our Support team ahead of purchase. Recommended alternatives for this product can be found below, along with publications, customer reviews and Q&As</p>

Properties

Form	Liquid
Storage instructions	Shipped at 4°C. Store at +4°C short term (1-2 weeks). Upon delivery aliquot. Store at -20°C long term. Avoid freeze / thaw cycle.
Storage buffer	pH: 6.8 Preservative: 0.09% Sodium azide Constituents: Tris buffered saline, 0.1% BSA
Purity	Immunogen affinity purified
Purification notes	ab245483 was affinity purified using an epitope specific to VPRBP immobilized on solid support.
Clonality	Polyclonal
Isotype	IgG

Applications

The Abpromise guarantee

Our **Abpromise guarantee** covers the use of ab245483 in the following tested applications.

The application notes include recommended starting dilutions; optimal dilutions/concentrations should be determined by the end user.

Application	Abreviews	Notes
IP		Use at 2-5 µg/mg of lysate.
WB		1/2000 - 1/10000. Predicted molecular weight: 169 kDa.

Target

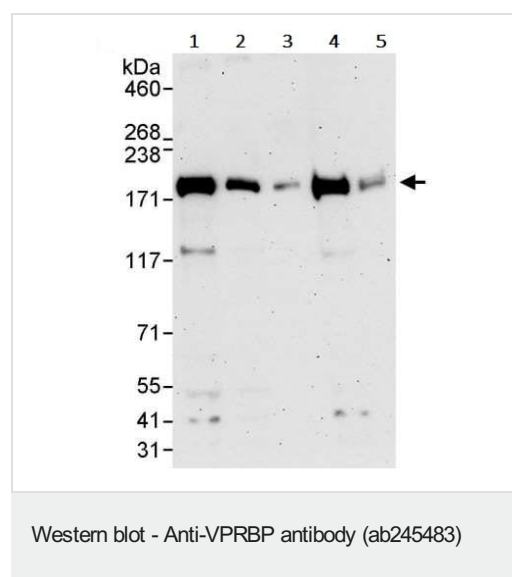
Relevance

VprBP may act as a receptor for CUL4-DDB1 ubiquitin ligase complex. In case of HIV1 infection, this protein is recruited by HIV1 VPR protein which is believed to result in an arrest of the cell cycle in the G2 phase.

Cellular localization

Cytoplasmic and Nuclear

Images



All lanes : Anti-VPRBP antibody (ab245483) at 0.04 µg

Lane 1 : HeLa (human epithelial cell line from cervix adenocarcinoma) whole cell lysate at 50 µg

Lane 2 : HeLa whole cell lysate at 15 µg

Lane 3 : HeLa whole cell lysate at 5 µg

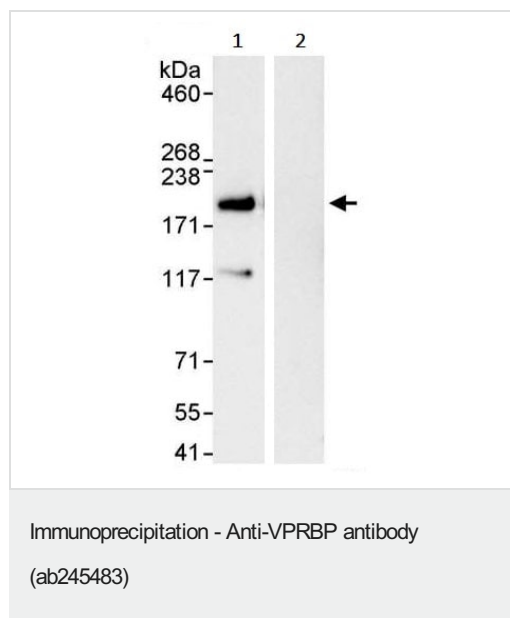
Lane 4 : HEK-293T (human epithelial cell line from embryonic kidney transformed with large T antigen) whole cell lysate at 50 µg

Lane 5 : NIH/3T3 (mouse embryo fibroblast cell line) whole cell lysate at 50 µg

Developed using the ECL technique.

Predicted band size: 169 kDa

Exposure time: 3 minutes



VPRBP was immunoprecipitated from HeLa (human epithelial cell line from cervix adenocarcinoma) whole cell lysate (1 mg for IP, 20% of IP loaded) with ab245483 at 3 µg/mg lysate. Western blot was performed from the immunoprecipitate using ab245483 at 1 µg/ml.

Lane 1: ab245483 IP in HeLa whole cell lysate.

Lane 2: Control IgG IP in HeLa whole cell lysate.

Detection: Chemiluminescence with exposure time of 10 seconds.

Please note: All products are "FOR RESEARCH USE ONLY. NOT FOR USE IN DIAGNOSTIC PROCEDURES"

Our Abpromise to you: Quality guaranteed and expert technical support

- Replacement or refund for products not performing as stated on the datasheet
- Valid for 12 months from date of delivery
- Response to your inquiry within 24 hours
- We provide support in Chinese, English, French, German, Japanese and Spanish
- Extensive multi-media technical resources to help you
- We investigate all quality concerns to ensure our products perform to the highest standards

If the product does not perform as described on this datasheet, we will offer a refund or replacement. For full details of the Abpromise, please visit <https://www.abcam.com/abpromise> or contact our technical team.

Terms and conditions

- Guarantee only valid for products bought direct from Abcam or one of our authorized distributors