


Product datasheet

Anti-VPS24 antibody [EPR12821] ab175930

Recombinant RabMAb

[2 References](#) [6 Images](#)

Overview

Product name	Anti-VPS24 antibody [EPR12821]
Description	Rabbit monoclonal [EPR12821] to VPS24
Host species	Rabbit
Tested applications	Suitable for: WB, IHC-P, IP, Flow Cyt (Intra) Unsuitable for: ICC/IF
Species reactivity	Reacts with: Human Predicted to work with: Mouse, Rat 
Immunogen	Recombinant fragment within Human VPS24. The exact sequence is proprietary. Database link: Q9Y3E7
Positive control	293T, HepG2, U87-MG, fetal brain lysates; human cervical carcinoma tissue, human prostate tissue, 293T cells
General notes	This product is a recombinant monoclonal antibody, which offers several advantages including: <ul style="list-style-type: none">- High batch-to-batch consistency and reproducibility- Improved sensitivity and specificity- Long-term security of supply- Animal-free production For more information see here . Our RabMAb [®] technology is a patented hybridoma-based technology for making rabbit monoclonal antibodies. For details on our patents, please refer to RabMAb[®] patents .

Properties

Form	Liquid
Storage instructions	Shipped at 4°C. Store at +4°C short term (1-2 weeks). Upon delivery aliquot. Store at -20°C long term. Avoid freeze / thaw cycle.
Storage buffer	pH: 7.20 Preservative: 0.01% Sodium azide Constituents: 9% PBS, 40% Glycerol (glycerin, glycerine), 0.05% BSA, 50% Tissue culture supernatant
Purity	Tissue culture supernatant

Clonality	Monoclonal
Clone number	EPR12821
Isotype	IgG

Applications

The Abpromise guarantee Our **Abpromise guarantee** covers the use of ab175930 in the following tested applications. The application notes include recommended starting dilutions; optimal dilutions/concentrations should be determined by the end user.

Application	Abreviews	Notes
WB		1/1000 - 1/10000. Predicted molecular weight: 29 kDa.
IHC-P		1/50 - 1/100. Perform heat mediated antigen retrieval before commencing with IHC staining protocol.
IP		1/10 - 1/100.
Flow Cyt (Intra)		1/10 - 1/100. ab172730 - Rabbit monoclonal IgG, is suitable for use as an isotype control with this antibody.

Application notes Is unsuitable for ICC/IF.

Target

Function Probable core component of the endosomal sorting required for transport complex III (ESCRT-III) which is involved in multivesicular bodies (MVBs) formation and sorting of endosomal cargo proteins into MVBs. MVBs contain intraluminal vesicles (ILVs) that are generated by invagination and scission from the limiting membrane of the endosome and mostly are delivered to lysosomes enabling degradation of membrane proteins, such as stimulated growth factor receptors, lysosomal enzymes and lipids. The MVB pathway appears to require the sequential function of ESCRT-O, -I, -II and -III complexes. ESCRT-III proteins mostly dissociate from the invaginating membrane before the ILV is released. The ESCRT machinery also functions in topologically equivalent membrane fission events, such as the terminal stages of cytokinesis and the budding of enveloped viruses (HIV-1 and other lentiviruses). ESCRT-III proteins are believed to mediate the necessary vesicle extrusion and/or membrane fission activities, possibly in conjunction with the AAA ATPase VPS4. Selectively binds to phosphatidylinositol 3,5-bisphosphate PtdIns(3,5)P₂ and PtdIns(3,4)P₂ in preference to other phosphoinositides tested. Involved in late stages of cytokinesis. Required for sorting/trafficking of EGF receptor.

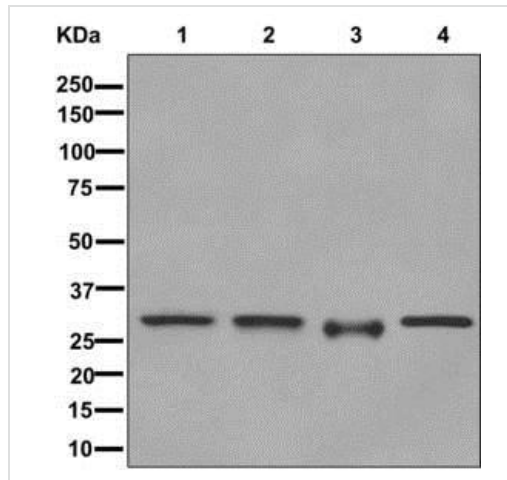
Tissue specificity Widely expressed. Expressed in heart, brain, placenta, lung, liver, skeletal muscle, kidney and pancreas.

Sequence similarities Belongs to the SNF7 family.

Domain The acidic C-terminus and the basic N-terminus are thought to render the protein in a closed, soluble and inactive conformation through an autoinhibitory intramolecular interaction. The open and active conformation, which enables membrane binding and oligomerization, is achieved by interaction with other cellular binding partners, probably including other ESCRT components.

Cellular localization Cytoplasm > cytosol. Membrane. Endosome. Late endosome membrane. Localizes to the

Images



Western blot - Anti-VPS24 antibody [EPR12821]
(ab175930)

All lanes : Anti-VPS24 antibody [EPR12821] (ab175930) at 1/1000 dilution

Lane 1 : 293T cell lysate

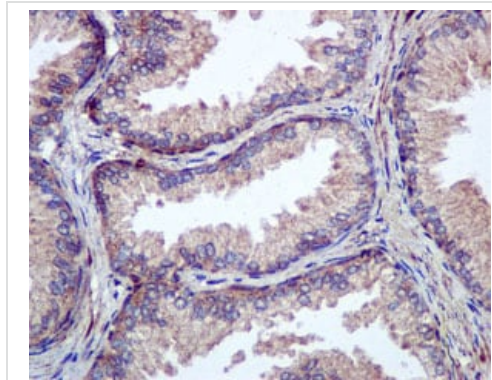
Lane 2 : HepG2 cell lysate

Lane 3 : U87-MG cell lysate

Lane 4 : Fetal brain tissue lysate

Lysates/proteins at 10 µg per lane.

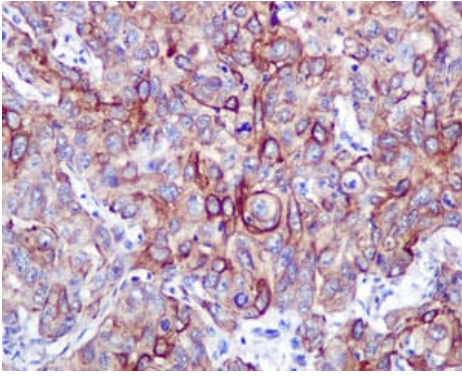
Predicted band size: 29 kDa



Immunohistochemistry (Formalin/PFA-fixed paraffin-embedded sections) - Anti-VPS24 antibody [EPR12821] (ab175930)

Immunohistochemical analysis of paraffin-embedded human prostate tissue labeling VPS24 with ab175930 at 1/50 dilution

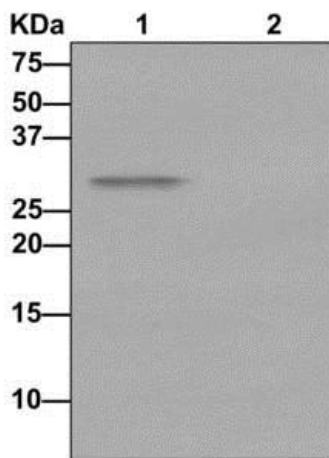
Perform heat mediated antigen retrieval before commencing with IHC staining protocol.



Immunohistochemistry (Formalin/PFA-fixed paraffin-embedded sections) - Anti-VPS24 antibody [EPR12821] (ab175930)

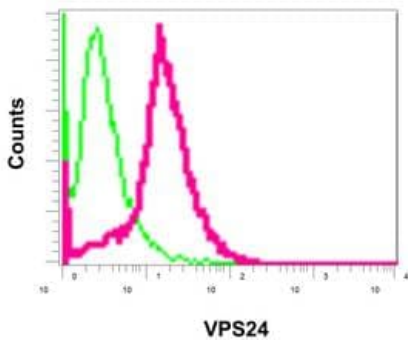
Immunohistochemical analysis of paraffin-embedded human cervical carcinoma tissue using labeling VPS24 with ab175930 at 1/50 dilution

Perform heat mediated antigen retrieval before commencing with IHC staining protocol.



Immunoprecipitation - Anti-VPS24 antibody [EPR12821] (ab175930)

Western blot analysis on immunoprecipitation pellet from (1) HepG2 cells lysate or (2) 1X PBS (negative control) using ab175930 at 1/10 dilution, and HRP-conjugated anti-rabbit IgG preferentially detecting the non-reduced form of rabbit IgG.



Flow Cytometry (Intracellular) - Anti-VPS24 antibody [EPR12821] (ab175930)

Intracellular flow cytometric analysis of permeabilized 293T cells labeling VPS24 with ab175930 at 1/10 dilution (red) or a rabbit IgG (negative) (green).

Why choose a recombinant antibody?

Research with confidence
Consistent and reproducible results

Long-term and scalable supply
Recombinant technology

Success from the first experiment
Confirmed specificity

Ethical standards compliant
Animal-free production

Anti-VPS24 antibody [EPR12821] (ab175930)

Please note: All products are "FOR RESEARCH USE ONLY. NOT FOR USE IN DIAGNOSTIC PROCEDURES"

Our Abpromise to you: Quality guaranteed and expert technical support

- Replacement or refund for products not performing as stated on the datasheet
- Valid for 12 months from date of delivery
- Response to your inquiry within 24 hours
- We provide support in Chinese, English, French, German, Japanese and Spanish
- Extensive multi-media technical resources to help you
- We investigate all quality concerns to ensure our products perform to the highest standards

If the product does not perform as described on this datasheet, we will offer a refund or replacement. For full details of the Abpromise, please visit <https://www.abcam.com/abpromise> or contact our technical team.

Terms and conditions

- Guarantee only valid for products bought direct from Abcam or one of our authorized distributors