




Product datasheet

Anti-VPS26 antibody [CL2287] - C-terminal ab211530

11 Images

Overview

Product name	Anti-VPS26 antibody [CL2287] - C-terminal
Description	Mouse monoclonal [CL2287] to VPS26 - C-terminal
Host species	Mouse
Tested applications	Suitable for: WB, ICC/IF, IHC-P
Species reactivity	Reacts with: Human Predicted to work with: Mouse, Rat, Cow 
Immunogen	Recombinant fragment corresponding to Human VPS26 aa 300 to the C-terminus (C terminal). Database link: 075436  Run BLAST with  Run BLAST with
Positive control	U251 MG cell line lysate; Human fallopian tube, small intestine, testis, and kidney tissues; HeLa , A431 , MCF7, U2OS and U251 cells.
General notes	<p>The Life Science industry has been in the grips of a reproducibility crisis for a number of years. Abcam is leading the way in addressing this with our range of recombinant monoclonal antibodies and knockout edited cell lines for gold-standard validation. Please check that this product meets your needs before purchasing.</p> <p>If you have any questions, special requirements or concerns, please send us an inquiry and/or contact our Support team ahead of purchase. Recommended alternatives for this product can be found below, along with publications, customer reviews and Q&As</p>

Properties

Form	Liquid
Storage instructions	Shipped at 4°C. Store at +4°C short term (1-2 weeks). Upon delivery aliquot. Store at -20°C long term. Avoid freeze / thaw cycle.
Storage buffer	pH: 7.20 Preservative: 0.02% Sodium azide Constituents: 40% Glycerol (glycerin, glycerine), 59% PBS
Purity	Protein A purified
Clonality	Monoclonal
Clone number	CL2287
Isotype	IgG1

Applications

The Abpromise guarantee

Our **Abpromise guarantee** covers the use of ab211530 in the following tested applications.

The application notes include recommended starting dilutions; optimal dilutions/concentrations should be determined by the end user.

Application	Abreviews	Notes
WB		1/200 - 1/500. Predicted molecular weight: 38 kDa.
ICC/IF		Use a concentration of 2 - 10 µg/ml. Fixation/Permeabilization: PFA/Triton X-100
IHC-P		1/200 - 1/500. Perform heat mediated antigen retrieval with citrate buffer pH 6 before commencing with IHC staining protocol.

Target

Function

Essential component of the retromer complex, a complex required to retrieve lysosomal enzyme receptors (IGF2R and M6PR) from endosomes to the trans-Golgi network. Also required to regulate transcytosis of the polymeric immunoglobulin receptor (pIgR-pIgA).

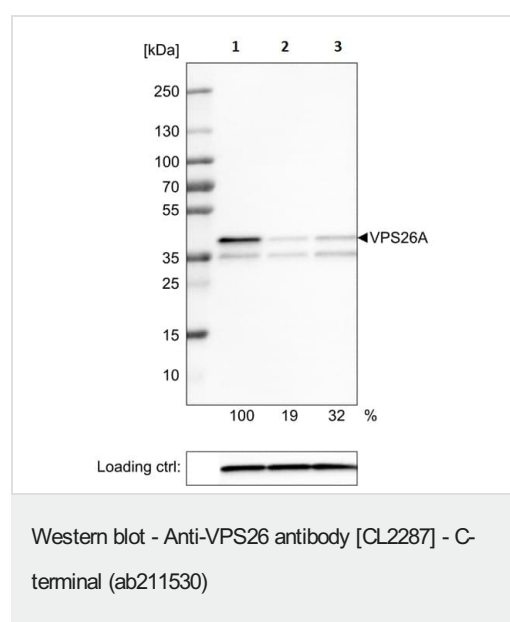
Sequence similarities

Belongs to the VPS26 family.

Cellular localization

Cytoplasm. Endosome membrane.

Images



All lanes : Anti-VPS26 antibody [CL2287] - C-terminal (ab211530)

Lane 1 : U-251 cells, transfected with control siRNA

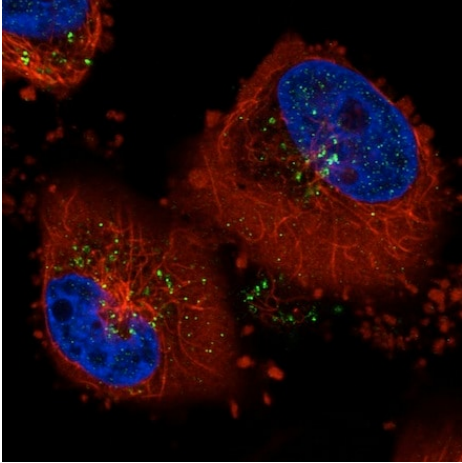
Lane 2 : U-251 cells, transfected with target specific siRNA probe #1

Lane 3 : U-251 cells, transfected with target specific siRNA probe #2

Predicted band size: 38 kDa

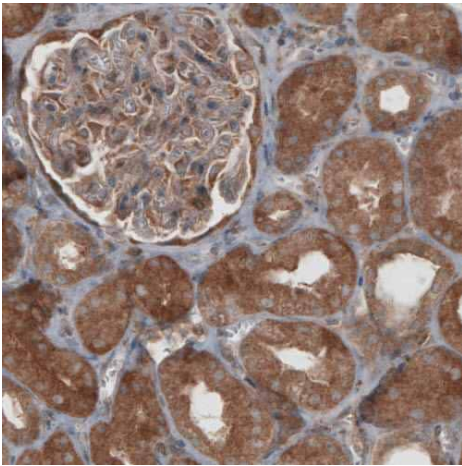
Downregulation of antibody signal confirms target specificity.

Remaining % intensity, relative control lane, is indicated. Anti-PPIB monoclonal antibody was used as loading control.



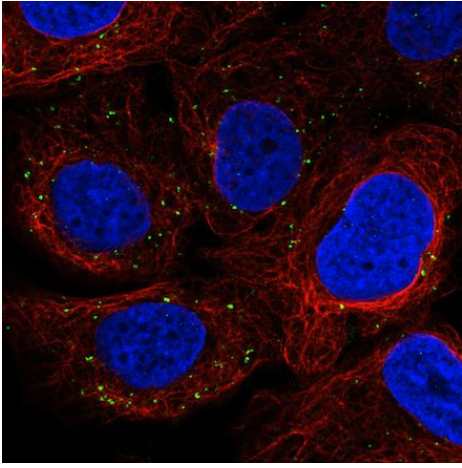
Immunofluorescent analysis of U251 cells (PFA-fixed/Triton X-100 permeabilized) labeling VPS26 with ab211530 at 4 µg/ml dilution (green). Microtubule- and nuclear probes are visualized in red and blue respectively.

Immunocytochemistry/ Immunofluorescence - Anti-VPS26 antibody [CL2287] - C-terminal (ab211530)



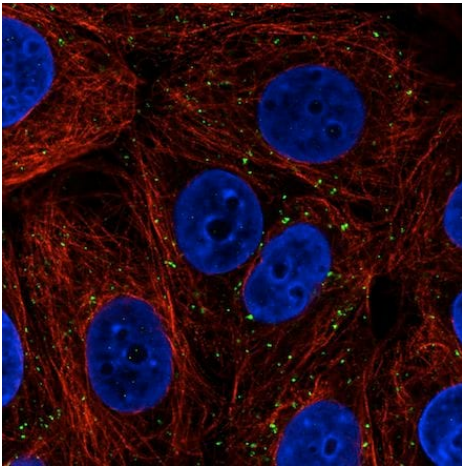
Immunohistochemical analysis of paraffin-embedded Human kidney tissue labeling VPS26 with ab211530 at 1/200 dilution.

Immunohistochemistry (Formalin/PFA-fixed paraffin-embedded sections) - Anti-VPS26 antibody [CL2287] - C-terminal (ab211530)



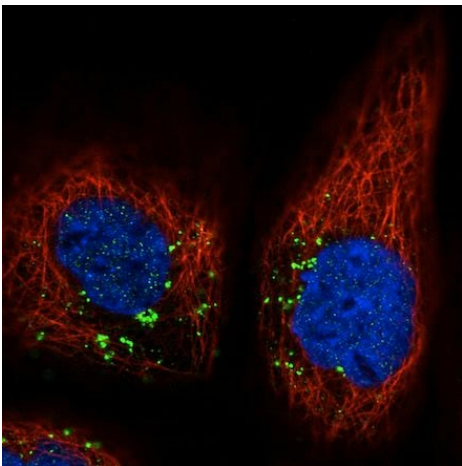
Immunocytochemistry/ Immunofluorescence - Anti-VPS26 antibody [CL2287] - C-terminal (ab211530)

Immunofluorescent analysis of U2OS cells (PFA-fixed/Triton X-100 permeabilized) labeling VPS26 with ab211530 at 4 µg/ml dilution (green). Microtubule- and nuclear probes are visualized in red and blue respectively.



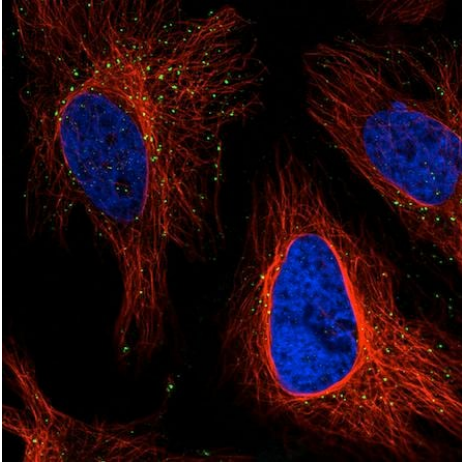
Immunocytochemistry/ Immunofluorescence - Anti-VPS26 antibody [CL2287] - C-terminal (ab211530)

Immunofluorescent analysis of MCF7 cells (PFA-fixed/Triton X-100 permeabilized) labeling VPS26 with ab211530 at 4 µg/ml dilution (green). Microtubule- and nuclear probes are visualized in red and blue respectively.



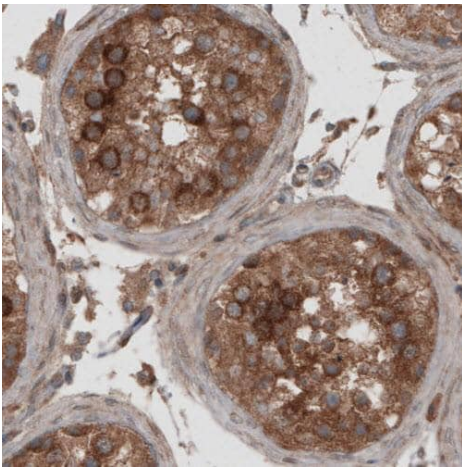
Immunocytochemistry/ Immunofluorescence - Anti-VPS26 antibody [CL2287] - C-terminal (ab211530)

Immunofluorescent analysis of A431 cells (PFA-fixed/Triton X-100 permeabilized) labeling VPS26 with ab211530 at 4 µg/ml dilution (green). Microtubule- and nuclear probes are visualized in red and blue respectively.



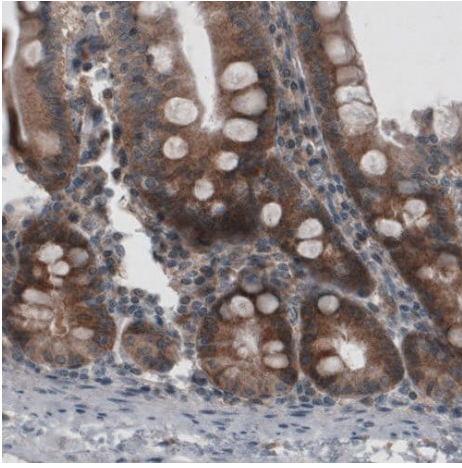
Immunocytochemistry/ Immunofluorescence - Anti-VPS26 antibody [CL2287] - C-terminal (ab211530)

Immunofluorescent analysis of HeLa cells (PFA-fixed/Triton X-100 permeabilized) labeling VPS26 with ab211530 at 4 µg/ml dilution (green). Microtubule- and nuclear probes are visualized in red and blue respectively.



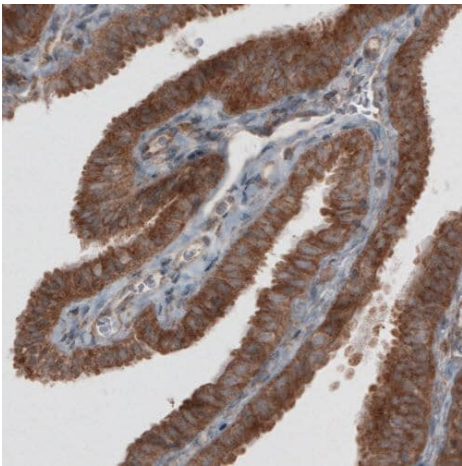
Immunohistochemistry (Formalin/PFA-fixed paraffin-embedded sections) - Anti-VPS26 antibody [CL2287] - C-terminal (ab211530)

Immunohistochemical analysis of paraffin-embedded Human testis tissue labeling VPS26 with ab211530 at 1/200 dilution.



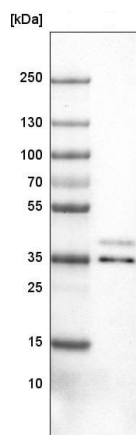
Immunohistochemistry (Formalin/PFA-fixed paraffin-embedded sections) - Anti-VPS26 antibody
[CL2287] - C-terminal (ab211530)

Immunohistochemical analysis of paraffin-embedded Human small intestine tissue labeling VPS26 with ab211530 at 1/200 dilution.



Immunohistochemistry (Formalin/PFA-fixed paraffin-embedded sections) - Anti-VPS26 antibody
[CL2287] - C-terminal (ab211530)

Immunohistochemical analysis of paraffin-embedded Human fallopian tube tissue labeling VPS26 with ab211530 at 1/200 dilution.



Anti-VPS26 antibody [CL2287] - C-terminal (ab211530) at 1/200 dilution + U251 MG cell line lysate

Predicted band size: 38 kDa

Western blot - Anti-VPS26 antibody [CL2287] - C-terminal (ab211530)

Please note: All products are "FOR RESEARCH USE ONLY. NOT FOR USE IN DIAGNOSTIC PROCEDURES"

Our Abpromise to you: Quality guaranteed and expert technical support

- Replacement or refund for products not performing as stated on the datasheet
- Valid for 12 months from date of delivery
- Response to your inquiry within 24 hours
- We provide support in Chinese, English, French, German, Japanese and Spanish
- Extensive multi-media technical resources to help you
- We investigate all quality concerns to ensure our products perform to the highest standards

If the product does not perform as described on this datasheet, we will offer a refund or replacement. For full details of the Abpromise, please visit <https://www.abcam.com/abpromise> or contact our technical team.

Terms and conditions

- Guarantee only valid for products bought direct from Abcam or one of our authorized distributors