

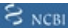


Product datasheet

Anti-VPS35 antibody ab97545

★★★★★ [2 Abreviews](#) [20 References](#) [1 Image](#)

Overview

Product name	Anti-VPS35 antibody
Description	Rabbit polyclonal to VPS35
Host species	Rabbit
Tested applications	Suitable for: WB
Species reactivity	Reacts with: Human Predicted to work with: Mouse, Rat, Cow 
Immunogen	Synthetic peptide corresponding to a region within amino acids 733-796 (KENDAVTIQV LNQLIQKIRE DLPNLESSEE TEQINKHFHN TLEHLRLRRE SPESEGPIYE GLIL) of Human VPS35 (NP_060676). Run BLAST with  Run BLAST with 
Positive control	H1299, HeLa S3, HepG2, MOLT4 and Raji cell lysates
General notes	<p>The Life Science industry has been in the grips of a reproducibility crisis for a number of years. Abcam is leading the way in addressing this with our range of recombinant monoclonal antibodies and knockout edited cell lines for gold-standard validation. Please check that this product meets your needs before purchasing.</p> <p>If you have any questions, special requirements or concerns, please send us an inquiry and/or contact our Support team ahead of purchase. Recommended alternatives for this product can be found below, along with publications, customer reviews and Q&As</p>

Properties

Form	Liquid
Storage instructions	Shipped at 4°C. Upon delivery aliquot. Store at -20°C or -80°C. Avoid freeze / thaw cycle.
Storage buffer	pH: 7.00 Preservative: 0.025% Proclin 300 Constituents: 79% PBS, 20% Glycerol (glycerin, glycerine)
Purity	Immunogen affinity purified
Clonality	Polyclonal
Isotype	IgG

Applications

The Abpromise guarantee

Our **Abpromise guarantee** covers the use of ab97545 in the following tested applications.

The application notes include recommended starting dilutions; optimal dilutions/concentrations should be determined by the end user.

Application	Abreviews	Notes
WB	★★★★★ (1)	1/500 - 1/3000. Predicted molecular weight: 92 kDa.

Target

Function

Essential component of the retromer complex, a complex required to retrieve lysosomal enzyme receptors (IGF2R and M6PR) from endosomes to the trans-Golgi network. Also required to regulate transcytosis of the polymeric immunoglobulin receptor (pIgR-pIgA).

Tissue specificity

Ubiquitous. Highly expressed in heart, brain, placenta, skeletal muscle, spleen, thymus, testis, ovary, small intestine, kidney and colon.

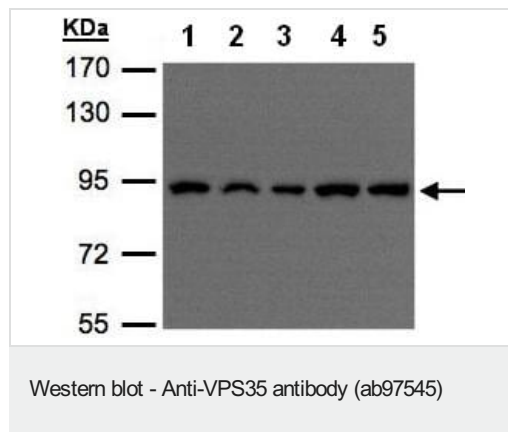
Sequence similarities

Belongs to the VPS35 family.

Cellular localization

Cytoplasm. Membrane.

Images



All lanes : Anti-VPS35 antibody (ab97545) at 1/500 dilution

Lane 1 : H1299 whole cell lysate

Lane 2 : HeLaS3 whole cell lysate

Lane 3 : HepG2 whole cell lysate

Lane 4 : MOLT4 whole cell lysate

Lane 5 : Raji whole cell lysate

Lysates/proteins at 30 µg per lane.

Predicted band size: 92 kDa

7.5% SDS PAGE

Please note: All products are "FOR RESEARCH USE ONLY. NOT FOR USE IN DIAGNOSTIC PROCEDURES"

Our Abpromise to you: Quality guaranteed and expert technical support

- Replacement or refund for products not performing as stated on the datasheet
- Valid for 12 months from date of delivery

- Response to your inquiry within 24 hours
- We provide support in Chinese, English, French, German, Japanese and Spanish
- Extensive multi-media technical resources to help you
- We investigate all quality concerns to ensure our products perform to the highest standards

If the product does not perform as described on this datasheet, we will offer a refund or replacement. For full details of the Abpromise, please visit <https://www.abcam.com/abpromise> or contact our technical team.

Terms and conditions

- Guarantee only valid for products bought direct from Abcam or one of our authorized distributors