


Product datasheet

Anti-VTI1B antibody [EPR15506(B)] α b184170

KO VALIDATED Recombinant RabMAb

[1 Abreviews](#) [4 References](#) [7 Images](#)

Overview

Product name	Anti-VTI1B antibody [EPR15506(B)]
Description	Rabbit monoclonal [EPR15506(B)] to VTI1B
Host species	Rabbit
Tested applications	Suitable for: IHC-P, WB, ICC/IF, Flow Cyt (Intra)
Species reactivity	Reacts with: Human Predicted to work with: Mouse, Rat 
Immunogen	Synthetic peptide. This information is proprietary to Abcam and/or its suppliers.
Positive control	WB: MCF7 and HeLa cell lysates; Human fetal lung and fetal liver lysates. IHC-P: Human ovarian carcinoma tissue. ICC/IF: MCF7 cells.
General notes	<p>This product is a recombinant monoclonal antibody, which offers several advantages including:</p> <ul style="list-style-type: none"> - High batch-to-batch consistency and reproducibility - Improved sensitivity and specificity - Long-term security of supply - Animal-free production <p>For more information see here.</p> <p>Our RabMAb[®] technology is a patented hybridoma-based technology for making rabbit monoclonal antibodies. For details on our patents, please refer to RabMAb[®] patents.</p>

Properties

Form	Liquid
Storage instructions	Shipped at 4°C. Store at +4°C short term (1-2 weeks). Upon delivery aliquot. Store at -20°C long term. Avoid freeze / thaw cycle.
Storage buffer	pH: 7.2 Preservative: 0.01% Sodium azide Constituents: 59% PBS, 40% Glycerol, 0.05% BSA
Purity	Protein A purified
Clonality	Monoclonal
Clone number	EPR15506(B)

Applications

The Abpromise guarantee

Our **Abpromise guarantee** covers the use of ab184170 in the following tested applications.

The application notes include recommended starting dilutions; optimal dilutions/concentrations should be determined by the end user.

Application	Abreviews	Notes
IHC-P		1/100. Perform heat mediated antigen retrieval with Tris/EDTA buffer pH 9.0 before commencing with IHC staining protocol.
WB		1/1000 - 1/10000. Detects a band of approximately 27 kDa (predicted molecular weight: 27 kDa).
ICC/IF		1/50.
Flow Cyt (Intra)		1/170. ab172730 - Rabbit monoclonal IgG, is suitable for use as an isotype control with this antibody.

Target

Function

V-SNARE that mediates vesicle transport pathways through interactions with t-SNAREs on the target membrane. These interactions are proposed to mediate aspects of the specificity of vesicle trafficking and to promote fusion of the lipid bilayers. May be concerned with increased secretion of cytokines associated with cellular senescence.

Tissue specificity

Expressed in all tissues examined.

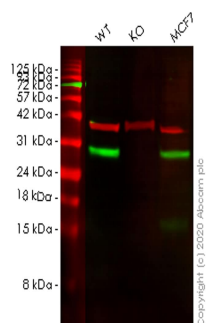
Sequence similarities

Belongs to the VT11 family.

Cellular localization

Endomembrane system. Cytoplasmic granule.

Images



Western blot - Anti-VTI1B antibody [EPR15506(B)]
(ab184170)

All lanes : Anti-VTI1B antibody [EPR15506(B)] (ab184170) at 1/1000 dilution

Lane 1 : Wild-type HeLa cell lysate

Lane 2 : VTI1B knockout HeLa cell lysate

Lane 3 : MCF7 cell lysate

Lysates/proteins at 20 µg per lane.

Secondary

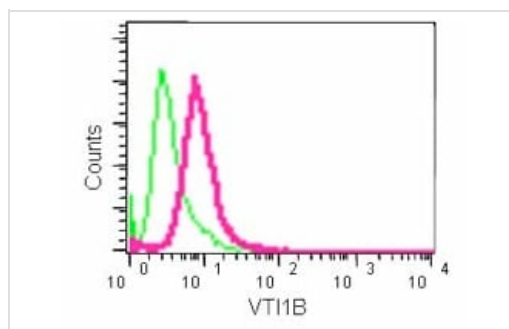
All lanes : Goat anti-Rabbit IgG H&L (IRDye® 800CW) preadsorbed ([ab216773](#)) at 1/10000 dilution

Predicted band size: 27 kDa

Observed band size: 28 kDa

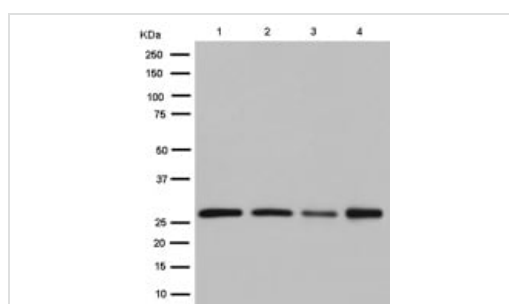
Lanes 1-3: Merged signal (red and green). Green - ab184170 observed at 28 kDa. Red - loading control [ab8245](#) observed at 36 kDa.

ab184170 Anti-VTI1B antibody [EPR15506(B)] was shown to specifically react with VTI1B in wild-type HeLa cells. Loss of signal was observed when knockout cell line [ab265483](#) (knockout cell lysate [ab257797](#)) was used. Wild-type and VTI1B knockout samples were subjected to SDS-PAGE. ab184170 and Anti-GAPDH antibody [6C5] - Loading Control ([ab8245](#)) were incubated overnight at 4°C at 1 in 1000 dilution and 1 in 20000 dilution respectively. Blots were developed with Goat anti-Rabbit IgG H&L (IRDye® 800CW) preadsorbed ([ab216773](#)) and Goat anti-Mouse IgG H&L (IRDye® 680RD) preadsorbed ([ab216776](#)) secondary antibodies at 1 in 20000 dilution for 1 hour at room temperature before imaging.



Flow Cytometry (Intracellular) - Anti-VTI1B antibody
[EPR15506(B)] (ab184170)

Intracellular flow cytometric analysis of HeLa cells (2% paraformaldehyde-fixed) labeling VTI1B with ab184170 at 1/170 dilution (red) or a rabbit IgG (negative) (green), followed by Goat anti rabbit IgG (FITC) secondary at 1/150 dilution.



Western blot - Anti-VTI1B antibody [EPR15506(B)]
(ab184170)

All lanes : Anti-VTI1B antibody [EPR15506(B)] (ab184170) at 1/2000 dilution

Lane 1 : MCF7 cell lysate

Lane 2 : HeLa cell lysate

Lane 3 : Human fetal liver lysate

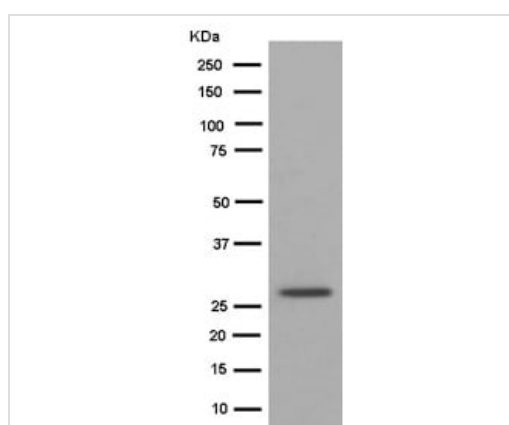
Lane 4 : Human fetal lung lysate

Lysates/proteins at 20 µg per lane.

Secondary

All lanes : Goat Anti-Rabbit IgG, (H+L), Peroxidase conjugated at 1/1000 dilution

Predicted band size: 27 kDa



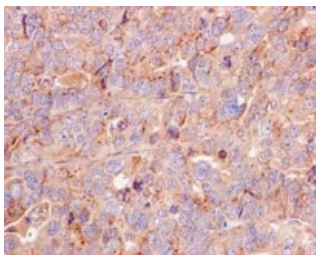
Western blot - Anti-VTI1B antibody [EPR15506(B)]
(ab184170)

Anti-VTI1B antibody [EPR15506(B)] (ab184170) at 1/10000 dilution + MCF7 cell lysate at 10 µg

Secondary

Goat Anti-Rabbit IgG, (H+L), Peroxidase conjugated at 1/1000 dilution

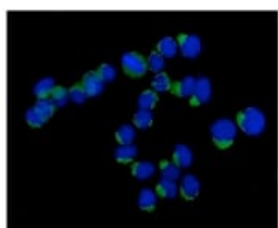
Predicted band size: 27 kDa



Immunohistochemistry (Formalin/PFA-fixed paraffin-embedded sections) - Anti-VT1B antibody [EPR15506(B)] (ab184170)

Immunohistochemical analysis of paraffin-embedded human ovarian carcinoma labeling VT1B with ab184170 at 1:100 dilution and HRP polymer. Counterstained with Hematoxylin.

Perform heat mediated antigen retrieval with EDTA buffer pH 9 before commencing with IHC staining protocol.



Immunocytochemistry/ Immunofluorescence - Anti-VT1B antibody [EPR15506(B)] (ab184170)

Immunofluorescent analysis of MCF7 cells (paraformaldehyde-fixed, 4%) labeling VT1B with ab184170 at 1/50 dilution followed by Goat anti rabbit IgG (AlexaFluor® 488) secondary at 1/200 dilution and counter-stained with DAPI (blue).

Why choose a recombinant antibody?



Research with confidence
Consistent and reproducible results



Long-term and scalable supply
Recombinant technology



Success from the first experiment
Confirmed specificity



Ethical standards compliant
Animal-free production

Anti-VT1B antibody [EPR15506(B)] (ab184170)

Please note: All products are "FOR RESEARCH USE ONLY. NOT FOR USE IN DIAGNOSTIC PROCEDURES"

Our Abpromise to you: Quality guaranteed and expert technical support

- Replacement or refund for products not performing as stated on the datasheet
- Valid for 12 months from date of delivery

- Response to your inquiry within 24 hours
- We provide support in Chinese, English, French, German, Japanese and Spanish
- Extensive multi-media technical resources to help you
- We investigate all quality concerns to ensure our products perform to the highest standards

If the product does not perform as described on this datasheet, we will offer a refund or replacement. For full details of the Abpromise, please visit <https://www.abcam.com/abpromise> or contact our technical team.

Terms and conditions

- Guarantee only valid for products bought direct from Abcam or one of our authorized distributors