


## Product datasheet

### Anti-WAPL/FOE antibody **ab70741**

★★★★★ [1 Abreviews](#) [7 References](#) [2 Images](#)

#### Overview

|                            |   |
|----------------------------|---|
| <b>Product name</b>        | Anti-WAPL/FOE antibody  |
| <b>Description</b>         | Rabbit polyclonal to WAPL/FOE   |
| <b>Host species</b>        | Rabbit  |
| <b>Tested applications</b> | <b>Suitable for:</b> WB   |
| <b>Species reactivity</b>  | <b>Reacts with:</b> Human<br><b>Predicted to work with:</b> Mouse, Rat, Rabbit, Horse, Chicken, Guinea pig, Cow, Dog, Turkey, Pig, Rhesus monkey, Gorilla, Platypus    |
| <b>Immunogen</b>           | Synthetic peptide corresponding to Human WAPL/FOE aa 1125-1175.<br>Database link: <a href="#">Q7Z5K2</a>  |
| <b>Positive control</b>    | HeLa nuclear extract.   |
| <b>General notes</b>       | <p>The Life Science industry has been in the grips of a reproducibility crisis for a number of years. Abcam is leading the way in addressing this with our range of recombinant monoclonal antibodies and knockout edited cell lines for gold-standard validation. Please check that this product meets your needs before purchasing.</p> <p>If you have any questions, special requirements or concerns, please send us an inquiry and/or contact our Support team ahead of purchase. Recommended alternatives for this product can be found below, along with publications, customer reviews and Q&amp;As</p> |

#### Properties

|                             |   |
|-----------------------------|---|
| <b>Form</b>                 | Liquid  |
| <b>Storage instructions</b> | Shipped at 4°C. Upon delivery aliquot and store at -20°C. Avoid freeze / thaw cycles.                     |
| <b>Storage buffer</b>       | pH: 7<br>Preservative: 0.09% Sodium azide<br>Constituents: 1.815% Tris, 1.764% Sodium citrate, 0.021% PBS |
| <b>Purity</b>               | Immunogen affinity purified   |
| <b>Clonality</b>            | Polyclonal  |
| <b>Isotype</b>              | IgG   |

#### Applications

## The Abpromise guarantee

Our **Abpromise guarantee** covers the use of ab70741 in the following tested applications.

The application notes include recommended starting dilutions; optimal dilutions/concentrations should be determined by the end user.

| Application | Abreviews | Notes  |
|-------------|-----------|--|
| WB          | ★★★★★ (1) | 1/2500 - 1/10000. Detects a band of approximately 175 kDa (predicted molecular weight: 133 kDa). |

## Target

### Function

Regulator of sister chromatid cohesion in mitosis which negatively regulates cohesin association with chromatin. Involved in both sister chromatid cohesion during interphase and sister-chromatid resolution during early stages of mitosis. Couples DNA replication to sister chromatid cohesion. Cohesion ensures that chromosome partitioning is accurate in both meiotic and mitotic cells and plays an important role in DNA repair.

### Tissue specificity

Isoform 1 is highly expressed in uterine cervix tumor. Isoform 2 is widely expressed with a high level in skeletal muscle and heart.

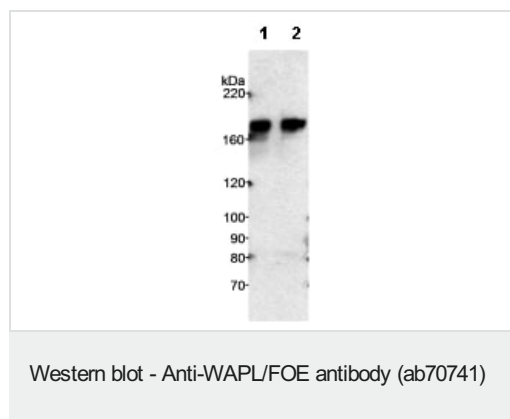
### Sequence similarities

Contains 1 WAPL domain.

### Cellular localization

Nucleus and Nucleus. Chromosome. Cytoplasm. Associates with chromatin through the cohesin complex during interphase. Released in the cytoplasm from nuclear envelope breakdown until anaphase, it reaccumulates in nucleus at telophase.

## Images



**All lanes :** Anti-WAPL/FOE antibody (ab70741) at 0.2 µg/ml

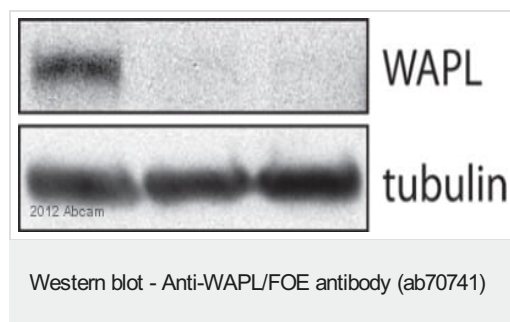
**Lane 1 :** HeLa nuclear extract at 5 µg

**Lane 2 :** HeLa nuclear extract at 20 µg

**Predicted band size:** 133 kDa

**Observed band size:** 175 kDa

**Exposure time:** 20 minutes



**All lanes :** Anti-WAPL/FOE antibody (ab70741) at 1/2000 dilution

**Lane 1 :** Human U2OS cells

**Lane 2 :** Human U2OS cells treated with siRNA #1 against WAPL/FOE

**Lane 3 :** Human U2OS cells treated with siRNA #2 against WAPL/FOE

Lysates/proteins at 90 µg per lane.

**Secondary**

**All lanes** : Immunopure Pierce anti-rabbit HRP conjugated at 1/10000 dilution

Developed using the ECL technique.

Performed under reducing conditions.

**Predicted band size:** 133 kDa

**Observed band size:** 150 kDa

**Please note:** All products are "FOR RESEARCH USE ONLY. NOT FOR USE IN DIAGNOSTIC PROCEDURES"

**Our Abpromise to you: Quality guaranteed and expert technical support**

---

- Replacement or refund for products not performing as stated on the datasheet
- Valid for 12 months from date of delivery
- Response to your inquiry within 24 hours
- We provide support in Chinese, English, French, German, Japanese and Spanish
- Extensive multi-media technical resources to help you
- We investigate all quality concerns to ensure our products perform to the highest standards

If the product does not perform as described on this datasheet, we will offer a refund or replacement. For full details of the Abpromise, please visit <https://www.abcam.com/abpromise> or contact our technical team.

**Terms and conditions**

---

- Guarantee only valid for products bought direct from Abcam or one of our authorized distributors