




Product datasheet

Anti-WASF2/WAVE2 antibody ab204376

★★★★★ [1 Abreviews](#) [6 Images](#)

Overview

Product name	Anti-WASF2/WAVE2 antibody
Description	Rabbit polyclonal to WASF2/WAVE2
Host species	Rabbit
Tested applications	Suitable for: IHC-P, ICC/IF
Species reactivity	Reacts with: Human Predicted to work with: Mouse 
Immunogen	Recombinant fragment corresponding to Human WASF2/WAVE2 aa 250-350. Database link: Q9Y6W5  Run BLAST with  Run BLAST with
Positive control	IHC-P: Human esophagus, placenta, endometrium, Fallopian tube tissue; ICC: U-2 OS whole cells.
General notes	<p>The Life Science industry has been in the grips of a reproducibility crisis for a number of years. Abcam is leading the way in addressing this with our range of recombinant monoclonal antibodies and knockout edited cell lines for gold-standard validation. Please check that this product meets your needs before purchasing.</p> <p>If you have any questions, special requirements or concerns, please send us an inquiry and/or contact our Support team ahead of purchase. Recommended alternatives for this product can be found below, along with publications, customer reviews and Q&As</p>

Properties

Form	Liquid
Storage instructions	Shipped at 4°C. Store at +4°C short term (1-2 weeks). Upon delivery aliquot. Store at -20°C long term. Avoid freeze / thaw cycle.
Storage buffer	pH: 7.20 Preservative: 0.02% Sodium azide Constituents: 40% Glycerol (glycerin, glycerine), 59% PBS
Purity	Immunogen affinity purified
Clonality	Polyclonal
Isotype	IgG

Applications

The Abpromise guarantee

Our **Abpromise guarantee** covers the use of ab204376 in the following tested applications.

The application notes include recommended starting dilutions; optimal dilutions/concentrations should be determined by the end user.

Application	Abreviews	Notes
IHC-P		1/200 - 1/500. Perform heat mediated antigen retrieval with citrate buffer pH 6 before commencing with IHC staining protocol.
ICC/IF	★★★★★ (1)	Use a concentration of 0.25 - 2 µg/ml. Fixation/Permeabilization: PFA/Triton X-100

Target

Function

Downstream effector molecule involved in the transmission of signals from tyrosine kinase receptors and small GTPases to the actin cytoskeleton. Promotes formation of actin filaments. Part of the WAVE complex that regulates lamellipodia formation. The WAVE complex regulates actin filament reorganization via its interaction with the Arp2/3 complex.

Tissue specificity

Expressed in all tissues with strongest expression in placenta, lung, and peripheral blood leukocytes, but not in skeletal muscle.

Sequence similarities

Belongs to the SCAR/WAVE family.
Contains 1 WH2 domain.

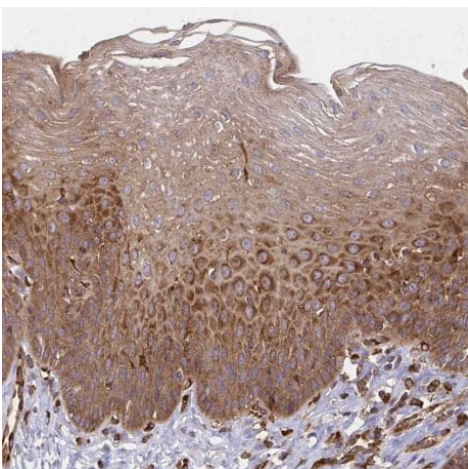
Domain

Binds and activates the Arp2/3 complex via the C-terminal domain. Interacts with actin via the WH2 domain.

Cellular localization

Cytoplasm > cytoskeleton. Cell projection > lamellipodium. At the interface between the lamellipodial actin meshwork and the membrane.

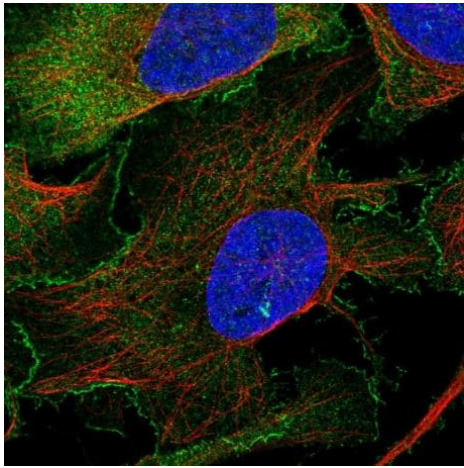
Images



Immunohistochemical analysis of human esophagus tissue labeling WASF2/WAVE2 in the cytoplasm of squamous epithelial cells with ab204376 at a 1/200 dilution.

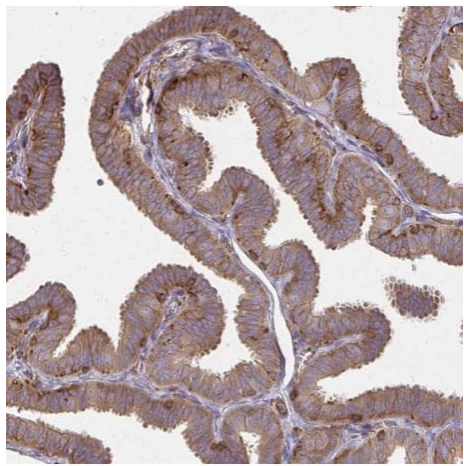
Performed heat mediated antigen retrieval with citrate buffer pH 6 before commencing with IHC staining protocol.

Immunohistochemistry (Formalin/PFA-fixed paraffin-embedded sections) - Anti-WASF2/WAVE2 antibody (ab204376)



Immunocytochemistry/ Immunofluorescence - Anti-WASF2/WAVE2 antibody (ab204376)

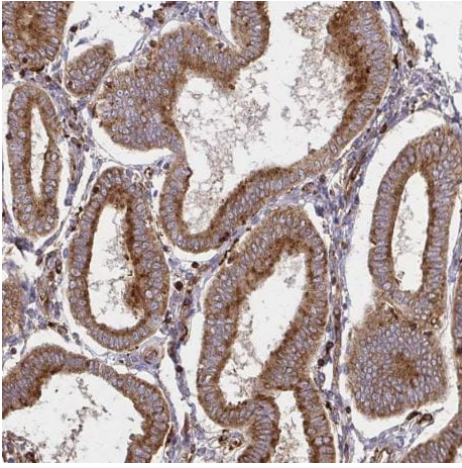
Immunocytochemical analysis of U-2 OS (Human bone osteosarcoma epithelial cell line) whole cells labeling WASF2/WAVE2 in the plasma membrane (green) with ab204376 at 2 µg/ml.



Immunohistochemistry (Formalin/PFA-fixed paraffin-embedded sections) - Anti-WASF2/WAVE2 antibody (ab204376)

Immunohistochemical analysis of human Fallopian tube tissue labeling WASF2/WAVE2 in the cytoplasm of glandular cells with ab204376 at a 1/200 dilution.

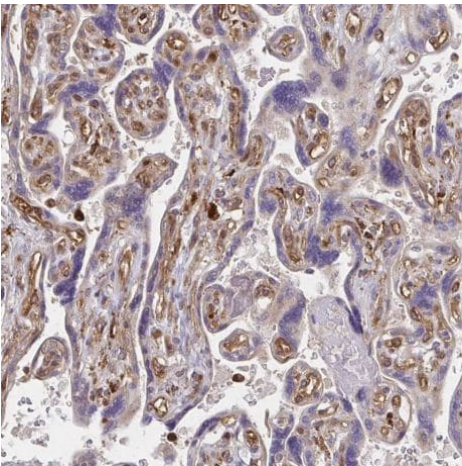
Performed heat mediated antigen retrieval with citrate buffer pH 6 before commencing with IHC staining protocol.



Immunohistochemistry (Formalin/PFA-fixed paraffin-embedded sections) - Anti-WASF2/WAVE2 antibody (ab204376)

Immunohistochemical analysis of human endometrium tissue labeling WASF2/WAVE2 in the cytoplasm of glandular cells with ab204376 at a 1/200 dilution.

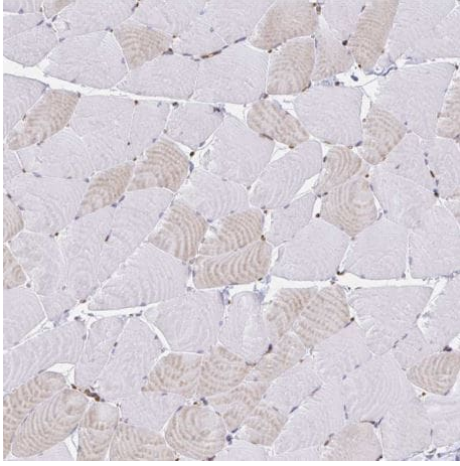
Performed heat mediated antigen retrieval with citrate buffer pH 6 before commencing with IHC staining protocol.



Immunohistochemistry (Formalin/PFA-fixed paraffin-embedded sections) - Anti-WASF2/WAVE2 antibody (ab204376)

Immunohistochemical analysis of human placenta tissue labeling WASF2/WAVE2 in the cytoplasm of endothelial cells with ab204376 at a 1/200 dilution.

Performed heat mediated antigen retrieval with citrate buffer pH 6 before commencing with IHC staining protocol.



Immunohistochemistry (Formalin/PFA-fixed paraffin-embedded sections) - Anti-WASF2/WAVE2 antibody (ab204376)

Immunohistochemical analysis of human skeletal muscle tissue labeling WASF2/WAVE2 in myocytes with ab204376 at a 1/200 dilution.

Performed heat mediated antigen retrieval with citrate buffer pH 6 before commencing with IHC staining protocol.

Please note: All products are "FOR RESEARCH USE ONLY. NOT FOR USE IN DIAGNOSTIC PROCEDURES"

Our Abpromise to you: Quality guaranteed and expert technical support

- Replacement or refund for products not performing as stated on the datasheet
- Valid for 12 months from date of delivery
- Response to your inquiry within 24 hours
- We provide support in Chinese, English, French, German, Japanese and Spanish
- Extensive multi-media technical resources to help you
- We investigate all quality concerns to ensure our products perform to the highest standards

If the product does not perform as described on this datasheet, we will offer a refund or replacement. For full details of the Abpromise, please visit <https://www.abcam.com/abpromise> or contact our technical team.

Terms and conditions

- Guarantee only valid for products bought direct from Abcam or one of our authorized distributors