




Product datasheet

Anti-WASP/Wiskott-Aldrich syndrome protein antibody [7B10E4] α b202025

5 Images

Overview

Product name	Anti-WASP/Wiskott-Aldrich syndrome protein antibody [7B10E4]
Description	Mouse monoclonal [7B10E4] to WASP/Wiskott-Aldrich syndrome protein
Host species	Mouse
Tested applications	Suitable for: WB, IHC-P, Flow Cyt
Species reactivity	Reacts with: Human Predicted to work with: Mouse 
Immunogen	Recombinant fragment corresponding to Human WASP/Wiskott-Aldrich syndrome protein aa 50-200. Expressed in E. Coli. Database link: P42768  Run BLAST with  Run BLAST with
Positive control	Human WASP/Wiskott-Aldrich syndrome protein (aa: 57-170) recombinant protein; Human WASP/Wiskott-Aldrich syndrome protein (aa: 57-170)-hlgGfC transfected HEK293 cell lysate; HeLa cells; Human ovarian cancer and colon cancer tissues
General notes	<p>The Life Science industry has been in the grips of a reproducibility crisis for a number of years. Abcam is leading the way in addressing this with our range of recombinant monoclonal antibodies and knockout edited cell lines for gold-standard validation. Please check that this product meets your needs before purchasing.</p> <p>If you have any questions, special requirements or concerns, please send us an inquiry and/or contact our Support team ahead of purchase. Recommended alternatives for this product can be found below, along with publications, customer reviews and Q&As</p>

Properties

Form	Liquid
Storage instructions	Shipped at 4°C. Store at +4°C short term (1-2 weeks). Upon delivery aliquot. Store at -20°C long term. Avoid freeze / thaw cycle.
Storage buffer	Preservative: 0.05% Sodium azide Constituent: 99% PBS
Purity	Protein G purified

Purification notes	Purified from tissue culture supernatant.
Clonality	Monoclonal
Clone number	7B10E4
Isotype	IgG2a

Applications

The Abpromise guarantee Our **Abpromise guarantee** covers the use of ab202025 in the following tested applications.

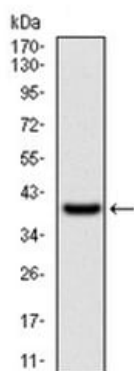
The application notes include recommended starting dilutions; optimal dilutions/concentrations should be determined by the end user.

Application	Abreviews	Notes
WB		1/500 - 1/2000. Predicted molecular weight: 53 kDa.
IHC-P		1/200 - 1/1000.
Flow Cyt		1/200 - 1/400. ab170191 - Mouse monoclonal IgG2a, is suitable for use as an isotype control with this antibody.

Target

Function	Effector protein for Rho-type GTPases, providing a link with the Arp2/3 complex that regulates the structure and dynamics of the actin cytoskeleton. Important for efficient actin polymerization. Possible regulator of lymphocyte and platelet function.
Tissue specificity	Expressed predominantly in the thymus. Also found, to a much lesser extent, in the spleen.
Involvement in disease	Defects in WAS are the cause of Wiskott-Aldrich syndrome (WAS) [MIM:301000]; also known as eczema-thrombocytopenia-immunodeficiency syndrome. WAS is an X-linked recessive immunodeficiency characterized by eczema, thrombocytopenia, recurrent infections, and bloody diarrhea. Death usually occurs before age 10. Defects in WAS are the cause of thrombocytopenia type 1 (THC1) [MIM:313900]. Thrombocytopenia is defined by a decrease in the number of platelets in circulating blood, resulting in the potential for increased bleeding and decreased ability for clotting. Defects in WAS are a cause of neutropenia severe congenital X-linked (XLN) [MIM:300299]. XLN is an immunodeficiency syndrome characterized by recurrent major bacterial infections, severe congenital neutropenia, and monocytopenia.
Sequence similarities	Contains 1 CRIB domain. Contains 1 WH1 domain. Contains 1 WH2 domain.
Domain	The WH1 (Wasp homology 1) domain may bind a Pro-rich ligand. The CRIB (Cdc42/Rac-interactive-binding) region binds to the C-terminal WH2 domain in the autoinhibited state of the protein. Binding of Rho-type GTPases to the CRIB induces a conformation change and leads to activation.
Cellular localization	Cytoplasm > cytoskeleton.

Images

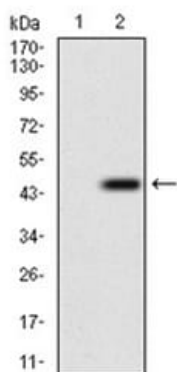


Western blot - Anti-WASP/Wiskott-Aldrich syndrome protein antibody [7B10E4] (ab202025)

Anti-WASP/Wiskott-Aldrich syndrome protein antibody [7B10E4] (ab202025) at 1/500 dilution + Human WASP/Wiskott-Aldrich syndrome protein (aa: 57-170) recombinant protein at 1 µg

Predicted band size: 53 kDa

Expected MW is 39 kDa



Western blot - Anti-WASP/Wiskott-Aldrich syndrome protein antibody [7B10E4] (ab202025)

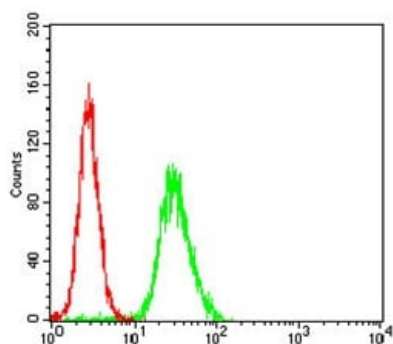
All lanes : Anti-WASP/Wiskott-Aldrich syndrome protein antibody [7B10E4] (ab202025) at 1/500 dilution

Lane 1 : Non transfected HEK293 cell lysate

Lane 2 : Human WASP/Wiskott-Aldrich syndrome protein (aa: 57-170)-hlgGfc transfected HEK293 cell lysate

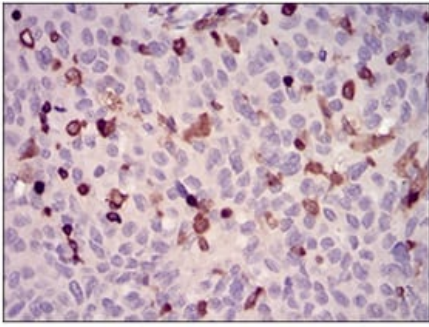
Lysates/proteins at 1 µg per lane.

Predicted band size: 53 kDa



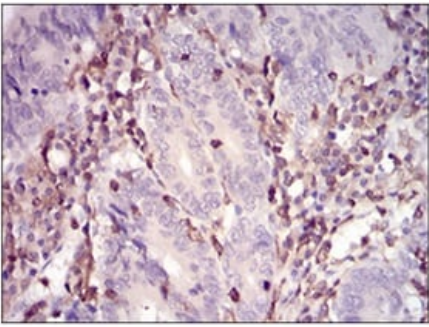
Flow Cytometry - Anti-WASP/Wiskott-Aldrich syndrome protein antibody [7B10E4] (ab202025)

Flow cytometric analysis of HeLa cells labeling WASP/Wiskott-Aldrich syndrome protein using ab202025 at 1/200 dilution (green) and negative control (red).



Immunohistochemical analysis of paraffin embedded Human ovarian cancer tissues labeling WASP/Wiskott-Aldrich syndrome protein using ab202025 at 1/200 dilution, followed by DAB staining.

Immunohistochemistry (Formalin/PFA-fixed paraffin-embedded sections) - Anti-WASP/Wiskott-Aldrich syndrome protein antibody [7B10E4] (ab202025)



Immunohistochemical analysis of paraffin embedded Human colon cancer tissues labeling WASP/Wiskott-Aldrich syndrome protein using ab202025 at 1/200 dilution, followed by DAB staining.

Immunohistochemistry (Formalin/PFA-fixed paraffin-embedded sections) - Anti-WASP/Wiskott-Aldrich syndrome protein antibody [7B10E4] (ab202025)

Please note: All products are "FOR RESEARCH USE ONLY. NOT FOR USE IN DIAGNOSTIC PROCEDURES"

Our Abpromise to you: Quality guaranteed and expert technical support

- Replacement or refund for products not performing as stated on the datasheet
- Valid for 12 months from date of delivery
- Response to your inquiry within 24 hours
- We provide support in Chinese, English, French, German, Japanese and Spanish
- Extensive multi-media technical resources to help you
- We investigate all quality concerns to ensure our products perform to the highest standards

If the product does not perform as described on this datasheet, we will offer a refund or replacement. For full details of the Abpromise, please visit <https://www.abcam.com/abpromise> or contact our technical team.

Terms and conditions

- Guarantee only valid for products bought direct from Abcam or one of our authorized distributors