


## Product datasheet

# Anti-WASP/Wiskott-Aldrich syndrome protein (phospho Y290) antibody ab59278

[5 References](#) [2 Images](#)

### Overview

---

<b>Product name</b>	Anti-WASP/Wiskott-Aldrich syndrome protein (phospho Y290) antibody
<b>Description</b>	Rabbit polyclonal to WASP/Wiskott-Aldrich syndrome protein (phospho Y290)
<b>Host species</b>	Rabbit
<b>Tested applications</b>	<b>Suitable for:</b> ELISA, WB, IHC-P
<b>Species reactivity</b>	<b>Reacts with:</b> Human <b>Predicted to work with:</b> Mouse 
<b>Immunogen</b>	Synthetic peptide corresponding to Human WASP/Wiskott-Aldrich syndrome protein aa 250-350 (phospho Y290). Database link: <a href="#">P42768</a>
<b>Positive control</b>	WB: Extracts from HepG2 cells. IHC-P: Human brain tissue.
<b>General notes</b>	<p>The Life Science industry has been in the grips of a reproducibility crisis for a number of years. Abcam is leading the way in addressing this with our range of recombinant monoclonal antibodies and knockout edited cell lines for gold-standard validation. Please check that this product meets your needs before purchasing.</p> <p>If you have any questions, special requirements or concerns, please send us an inquiry and/or contact our Support team ahead of purchase. Recommended alternatives for this product can be found below, along with publications, customer reviews and Q&amp;As</p>

### Properties

---

<b>Form</b>	Liquid
<b>Storage instructions</b>	Shipped at 4°C. Store at -20°C. Stable for 12 months at -20°C.
<b>Storage buffer</b>	pH: 7.40 Preservative: 0.02% Sodium azide Constituents: PBS, 50% Glycerol (glycerin, glycerine), 0.87% Sodium chloride  Without Mg+2 and Ca+2
<b>Purity</b>	Immunogen affinity purified
<b>Clonality</b>	Polyclonal

Isotype

IgG

## Applications

### The Abpromise guarantee

Our **Abpromise guarantee** covers the use of ab59278 in the following tested applications.

The application notes include recommended starting dilutions; optimal dilutions/concentrations should be determined by the end user.

Application	Abreviews	Notes
ELISA		Use at an assay dependent concentration.
WB		1/500 - 1/1000. Detects a band of approximately 60 kDa (predicted molecular weight: 53 kDa).
IHC-P		Use at an assay dependent concentration.

## Target

### Function

Effector protein for Rho-type GTPases, providing a link with the Arp2/3 complex that regulates the structure and dynamics of the actin cytoskeleton. Important for efficient actin polymerization. Possible regulator of lymphocyte and platelet function.

### Tissue specificity

Expressed predominantly in the thymus. Also found, to a much lesser extent, in the spleen.

### Involvement in disease

Defects in WAS are the cause of Wiskott-Aldrich syndrome (WAS) [MIM:301000]; also known as eczema-thrombocytopenia-immunodeficiency syndrome. WAS is an X-linked recessive immunodeficiency characterized by eczema, thrombocytopenia, recurrent infections, and bloody diarrhea. Death usually occurs before age 10.

Defects in WAS are the cause of thrombocytopenia type 1 (THC1) [MIM:313900]. Thrombocytopenia is defined by a decrease in the number of platelets in circulating blood, resulting in the potential for increased bleeding and decreased ability for clotting.

Defects in WAS are a cause of neutropenia severe congenital X-linked (XLN) [MIM:300299]. XLN is an immunodeficiency syndrome characterized by recurrent major bacterial infections, severe congenital neutropenia, and monocytopenia.

### Sequence similarities

Contains 1 CRIB domain.  
Contains 1 WH1 domain.  
Contains 1 WH2 domain.

### Domain

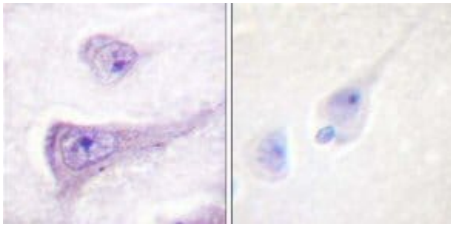
The WH1 (Wasp homology 1) domain may bind a Pro-rich ligand.

The CRIB (Cdc42/Rac-interactive-binding) region binds to the C-terminal WH2 domain in the autoinhibited state of the protein. Binding of Rho-type GTPases to the CRIB induces a conformation change and leads to activation.

### Cellular localization

Cytoplasm > cytoskeleton.

## Images

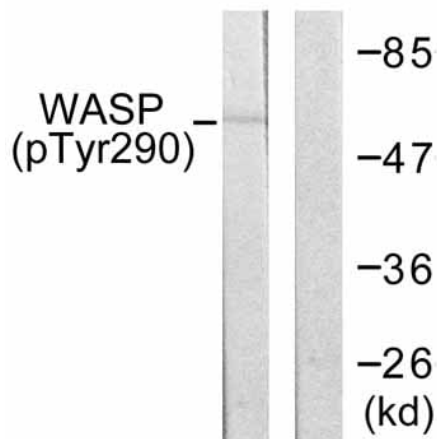


Immunohistochemistry (Formalin/PFA-fixed paraffin-embedded sections) - Anti-WASP/Wiskott-Aldrich syndrome protein (phospho Y290) antibody (ab59278)

Immunohistochemical analysis of paraffin-embedded human brain tissue using ab59278 at a dilution of 1/50.

Left image: no immunising peptide.

Right hand image: with immunising peptide.



Western blot - Anti-WASP/Wiskott-Aldrich syndrome protein (phospho Y290) antibody (ab59278)

**All lanes :** Anti-WASP/Wiskott-Aldrich syndrome protein (phospho Y290) antibody (ab59278) at 1/500 dilution

**Lane 1 :** Extracts from HepG2 cells with no immunising peptide

**Lane 2 :** Extracts from HepG2 cells with immunising peptide

**Predicted band size:** 53 kDa

**Observed band size:** 60 kDa

**Please note:** All products are "FOR RESEARCH USE ONLY. NOT FOR USE IN DIAGNOSTIC PROCEDURES"

### Our Abpromise to you: Quality guaranteed and expert technical support

- Replacement or refund for products not performing as stated on the datasheet
- Valid for 12 months from date of delivery
- Response to your inquiry within 24 hours
- We provide support in Chinese, English, French, German, Japanese and Spanish
- Extensive multi-media technical resources to help you
- We investigate all quality concerns to ensure our products perform to the highest standards

If the product does not perform as described on this datasheet, we will offer a refund or replacement. For full details of the Abpromise, please visit <https://www.abcam.com/abpromise> or contact our technical team.

## Terms and conditions

---

- Guarantee only valid for products bought direct from Abcam or one of our authorized distributors