


### Anti-WBP11 antibody ab154590

★★★★★ [2 Abreviews](#) [3 Images](#)

#### Overview

<b>Product name</b>	Anti-WBP11 antibody
<b>Description</b>	Rabbit polyclonal to WBP11
<b>Host species</b>	Rabbit
<b>Tested applications</b>	<b>Suitable for:</b> WB, IHC-P
<b>Species reactivity</b>	<b>Reacts with:</b> Mouse, Human <b>Predicted to work with:</b> Rat, Xenopus laevis, Xenopus tropicalis 
<b>Immunogen</b>	Recombinant fragment, corresponding to a region within amino acids 1-290 of Human WBP11 (Uniprot ID: Q9Y2W2).
<b>Positive control</b>	Jurkat, Raji, K562, THP1 and HL60 whole cell lysates; Human SkHep1 and Mouse C2C12 xenograft tissues.
<b>General notes</b>	<p>The Life Science industry has been in the grips of a reproducibility crisis for a number of years. Abcam is leading the way in addressing this with our range of recombinant monoclonal antibodies and knockout edited cell lines for gold-standard validation. Please check that this product meets your needs before purchasing.</p> <p>If you have any questions, special requirements or concerns, please send us an inquiry and/or contact our Support team ahead of purchase. Recommended alternatives for this product can be found below, along with publications, customer reviews and Q&amp;As</p>

#### Properties

<b>Form</b>	Liquid
<b>Storage instructions</b>	Shipped at 4°C. Upon delivery aliquot. Store at -20°C or -80°C. Avoid freeze / thaw cycle.
<b>Storage buffer</b>	pH: 7.00 Preservative: 0.025% Proclin 300 Constituents: 79% PBS, 20% Glycerol (glycerin, glycerine)
<b>Purity</b>	Immunogen affinity purified
<b>Clonality</b>	Polyclonal
<b>Isotype</b>	IgG

#### Applications

## The Abpromise guarantee

Our **Abpromise guarantee** covers the use of ab154590 in the following tested applications.

The application notes include recommended starting dilutions; optimal dilutions/concentrations should be determined by the end user.

Application	Abreviews	Notes
WB		1/500 - 1/3000. Predicted molecular weight: 70 kDa.
IHC-P		1/100 - 1/1000.

## Target

### Function

Activates pre-mRNA splicing. May inhibit PP1 phosphatase activity.

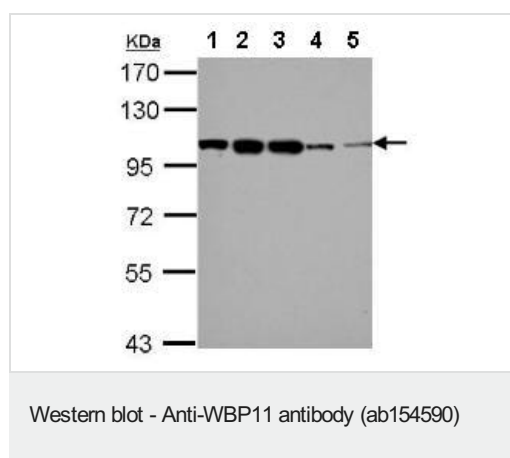
### Tissue specificity

Ubiquitous. Highly expressed in the heart, pancreas, kidney skeletal muscle, placenta and brain (at protein level). Weakly expressed in liver and lung.

### Cellular localization

Nucleus. Cytoplasm. Predominantly located in the nucleus with granular heterogeneous distribution. Excluded from nucleoli in interphase cells, distributed throughout cytoplasm in dividing cells. Colocalized with SC35 and U2B in the nucleus. In the cytoplasm, associates with the intermediate filament protein vimentin.

## Images



**All lanes :** Anti-WBP11 antibody (ab154590) at 1/2000 dilution

**Lane 1 :** Jurkat whole cell lysate

**Lane 2 :** Raji whole cell lysate

**Lane 3 :** K562 whole cell lysate

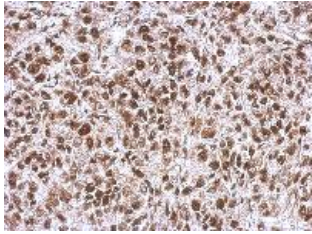
**Lane 4 :** THP1 whole cell lysate

**Lane 5 :** HL60 whole cell lysate

Lysates/proteins at 30 µg per lane.

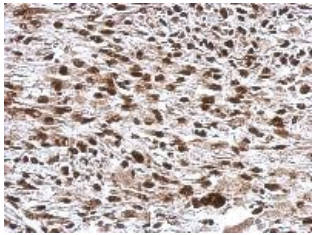
**Predicted band size:** 70 kDa

7.5% SDS PAGE



Immunohistochemical analysis of paraffin-embedded Human SkHep1 xenograft tissue, labeling WBP11 with ab154590 at 1/500 dilution.

Immunohistochemistry (Formalin/PFA-fixed paraffin-embedded sections) - Anti-WBP11 antibody (ab154590)



Immunohistochemical analysis of paraffin-embedded Mouse C2C12 xenograft tissue, labeling WBP11 with ab154590 at 1/500 dilution.

Immunohistochemistry (Formalin/PFA-fixed paraffin-embedded sections) - Anti-WBP11 antibody (ab154590)

**Please note:** All products are "FOR RESEARCH USE ONLY. NOT FOR USE IN DIAGNOSTIC PROCEDURES"

### Our Abpromise to you: Quality guaranteed and expert technical support

- Replacement or refund for products not performing as stated on the datasheet
- Valid for 12 months from date of delivery
- Response to your inquiry within 24 hours
- We provide support in Chinese, English, French, German, Japanese and Spanish
- Extensive multi-media technical resources to help you
- We investigate all quality concerns to ensure our products perform to the highest standards

If the product does not perform as described on this datasheet, we will offer a refund or replacement. For full details of the Abpromise, please visit <https://www.abcam.com/abpromise> or contact our technical team.

### Terms and conditions

- Guarantee only valid for products bought direct from Abcam or one of our authorized distributors