




Product datasheet

Anti-WBP11 antibody ab204361

3 Images

Overview

Product name	Anti-WBP11 antibody
Description	Rabbit polyclonal to WBP11
Host species	Rabbit
Tested applications	Suitable for: WB, IHC-P, ICC/IF
Species reactivity	Reacts with: Human Predicted to work with: Mouse, Rat, Zebrafish 
Immunogen	Recombinant fragment corresponding to Human WBP11 aa 550 to the C-terminus (internal sequence). Database link: Q9Y2W2  Run BLAST with  Run BLAST with
Positive control	WB: NTERA-2 cl.D1 [NT2/D1] whole cell lysate; IHC-P: Human heart muscle tissue, ICC: U-2 OS whole cells.
General notes	<p>The Life Science industry has been in the grips of a reproducibility crisis for a number of years. Abcam is leading the way in addressing this with our range of recombinant monoclonal antibodies and knockout edited cell lines for gold-standard validation. Please check that this product meets your needs before purchasing.</p> <p>If you have any questions, special requirements or concerns, please send us an inquiry and/or contact our Support team ahead of purchase. Recommended alternatives for this product can be found below, along with publications, customer reviews and Q&As</p>

Properties

Form	Liquid
Storage instructions	Shipped at 4°C. Store at +4°C short term (1-2 weeks). Upon delivery aliquot. Store at -20°C long term. Avoid freeze / thaw cycle.
Storage buffer	pH: 7.20 Preservative: 0.02% Sodium azide Constituents: 59% PBS, 40% Glycerol (glycerin, glycerine)
Purity	Immunogen affinity purified
Clonality	Polyclonal
Isotype	IgG

Applications

The Abpromise guarantee Our **Abpromise guarantee** covers the use of ab204361 in the following tested applications.

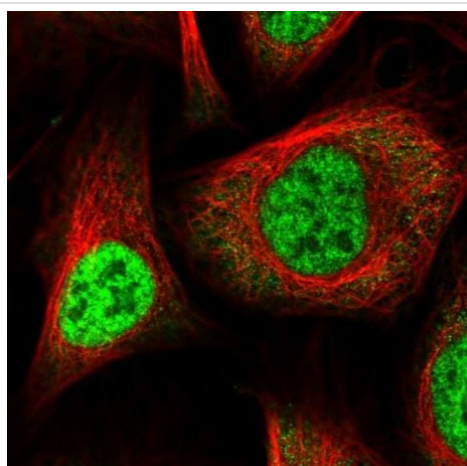
The application notes include recommended starting dilutions; optimal dilutions/concentrations should be determined by the end user.

Application	Abreviews	Notes
WB		Use a concentration of 0.04 - 0.4 µg/ml. Predicted molecular weight: 70 kDa.
IHC-P		1/200 - 1/500. Perform heat mediated antigen retrieval with citrate buffer pH 6 before commencing with IHC staining protocol.
ICC/IF		Use a concentration of 0.25 - 2 µg/ml. Fixation/Permeabilization: PFA/Triton X-100

Target

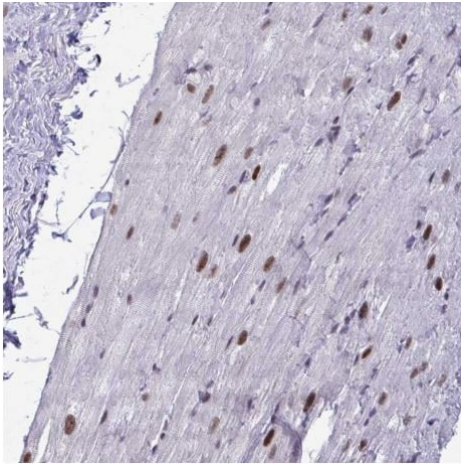
Function	Activates pre-mRNA splicing. May inhibit PP1 phosphatase activity.
Tissue specificity	Ubiquitous. Highly expressed in the heart, pancreas, kidney skeletal muscle, placenta and brain (at protein level). Weakly expressed in liver and lung.
Cellular localization	Nucleus. Cytoplasm. Predominantly located in the nucleus with granular heterogeneous distribution. Excluded from nucleoli in interphase cells, distributed throughout cytoplasm in dividing cells. Colocalized with SC35 and U2B in the nucleus. In the cytoplasm, associates with the intermediate filament protein vimentin.

Images



Immunocytochemical analysis of U-2 OS (Human bone osteosarcoma epithelial cell line) whole cells labeling WBP11 in the nucleoplasm with ab204361 at 2 µg/ml.

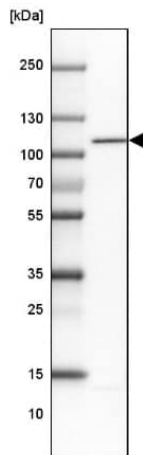
Immunocytochemistry/ Immunofluorescence - Anti-WBP11 antibody (ab204361)



Immunohistochemistry (Formalin/PFA-fixed paraffin-embedded sections) - Anti-WBP11 antibody (ab204361)

Immunohistochemical analysis of human heart muscle tissue labeling WBP11 in the nucleus of myocytes with ab204361 at 1/200 dilution.

Performed heat mediated antigen retrieval with citrate buffer pH 6 before commencing with IHC staining protocol.



Western blot - Anti-WBP11 antibody (ab204361)

Anti-WBP11 antibody (ab204361) at 0.4 µg/ml + NTERA-2 cl.D1 [NT2/D1] (Human malignant pluripotent embryonic carcinoma cell line) whole cell lysate

Predicted band size: 70 kDa

Please note: All products are "FOR RESEARCH USE ONLY. NOT FOR USE IN DIAGNOSTIC PROCEDURES"

Our Abpromise to you: Quality guaranteed and expert technical support

- Replacement or refund for products not performing as stated on the datasheet
- Valid for 12 months from date of delivery
- Response to your inquiry within 24 hours
- We provide support in Chinese, English, French, German, Japanese and Spanish
- Extensive multi-media technical resources to help you
- We investigate all quality concerns to ensure our products perform to the highest standards

If the product does not perform as described on this datasheet, we will offer a refund or replacement. For full details of the Abpromise, please visit <https://www.abcam.com/abpromise> or contact our technical team.

Terms and conditions

- Guarantee only valid for products bought direct from Abcam or one of our authorized distributors