




## Product datasheet

# Anti-WDFY3 antibody - N-terminal ab240917

[2 Images](#)

### Overview

---

<b>Product name</b>	Anti-WDFY3 antibody - N-terminal
<b>Description</b>	Rabbit polyclonal to WDFY3 - N-terminal
<b>Host species</b>	Rabbit
<b>Tested applications</b>	<b>Suitable for:</b> WB, ICC/IF
<b>Species reactivity</b>	<b>Reacts with:</b> Rat, Human <b>Predicted to work with:</b> Mouse 
<b>Immunogen</b>	Synthetic peptide corresponding to Human WDFY3 aa 500-600 (N terminal). NP_055806.2 Database link: <a href="#">Q8IZQ1</a>  <a href="#">Run BLAST with</a>  <a href="#">Run BLAST with</a>
<b>Positive control</b>	ICC/IF: RKO cells. WB: Rat brain lysate.
<b>General notes</b>	<p>The Life Science industry has been in the grips of a reproducibility crisis for a number of years. Abcam is leading the way in addressing this with our range of recombinant monoclonal antibodies and knockout edited cell lines for gold-standard validation. Please check that this product meets your needs before purchasing.</p> <p>If you have any questions, special requirements or concerns, please send us an inquiry and/or contact our Support team ahead of purchase. Recommended alternatives for this product can be found below, along with publications, customer reviews and Q&amp;As</p>

### Properties

---

<b>Form</b>	Liquid
<b>Storage instructions</b>	Shipped at 4°C. Store at +4°C short term (1-2 weeks). Upon delivery aliquot. Store at -20°C long term. Avoid freeze / thaw cycle.
<b>Storage buffer</b>	Preservative: 0.09% Sodium azide Constituents: PBS, 50% Glycerol (glycerin, glycerine)
<b>Purity</b>	Immunogen affinity purified
<b>Clonality</b>	Polyclonal
<b>Isotype</b>	IgG

### Applications

## The Abpromise guarantee

Our **Abpromise guarantee** covers the use of ab240917 in the following tested applications.

The application notes include recommended starting dilutions; optimal dilutions/concentrations should be determined by the end user.

Application	Abreviews	Notes
WB		1/1000. Predicted molecular weight: 395 kDa.
ICC/IF		1/100.

## Target

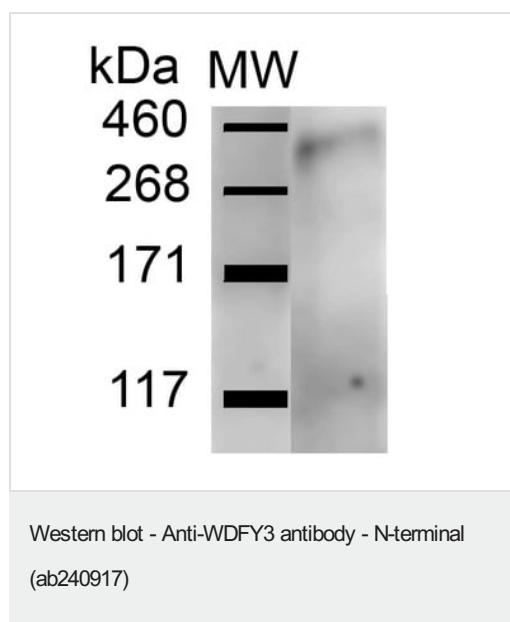
### Relevance

WDFY3 (WD repeat and FYVE domain containing protein 3) was identified in a screen for phosphatidylinositol 3 phosphate [PtdIns(3)P] binding proteins. The FYVE domain is a zinc binding domain found in many PtdIns(3) binding proteins and is proposed to target proteins to membrane lipids. WDFY3 has been shown localized to the nuclear membrane and within autophagic membranes and it is proposed to function as a link between protein aggregates and the autophagic machinery. WDFY3 is also known as autophagy linked FYVE protein (Alfy).

### Cellular localization

Membrane; Peripheral membrane protein; Cytoplasmic side. Note: Colocalizes with autophagic structures in starved cells.

## Images



Anti-WDFY3 antibody - N-terminal (ab240917) at 1/1000 dilution (1 hour at RT) + Rat brain lysate at 15 µg

### Secondary

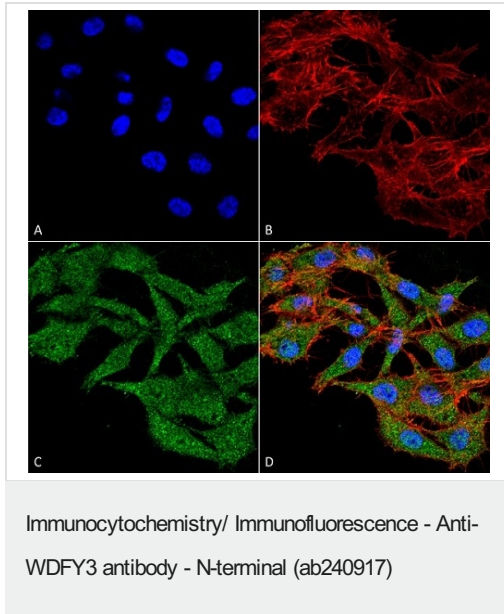
Goat Anti-Rabbit HRP for 60 min at RT at 1/2000 dilution

Developed using the ECL technique.

**Predicted band size:** 395 kDa

**Exposure time:** 6 minutes

**Block:** 5% Skimmed milk in 1X TBST.



Immunocytochemistry/Immunofluorescence analysis of RKO (human colon carcinoma cell line ) cells labeling WDFY3 using ab240917 at 1/100 dilution for 60 minutes at RT. Cells were fixed in 4% formaldehyde for 15 minutes at RT.

Secondary Antibody: Goat Anti-Mouse ATTO 488 at 1/100 dilution for 60 minutes at RT.

Counterstain: Phalloidin Texas Red F-Actin stain; DAPI (blue) nuclear stain.

**(A)** DAPI (blue) nuclear stain **(B)** Phalloidin Texas Red F-Actin stain **(C)** ab240917 **(D)** Composite.

**Please note:** All products are "FOR RESEARCH USE ONLY. NOT FOR USE IN DIAGNOSTIC PROCEDURES"

### Our Abpromise to you: Quality guaranteed and expert technical support

- Replacement or refund for products not performing as stated on the datasheet
- Valid for 12 months from date of delivery
- Response to your inquiry within 24 hours
- We provide support in Chinese, English, French, German, Japanese and Spanish
- Extensive multi-media technical resources to help you
- We investigate all quality concerns to ensure our products perform to the highest standards

If the product does not perform as described on this datasheet, we will offer a refund or replacement. For full details of the Abpromise, please visit <https://www.abcam.com/abpromise> or contact our technical team.

### Terms and conditions

- Guarantee only valid for products bought direct from Abcam or one of our authorized distributors