




Product datasheet

Anti-WDR42A antibody ab176809

[2 Images](#)

Overview

Product name	Anti-WDR42A antibody
Description	Rabbit polyclonal to WDR42A
Host species	Rabbit
Tested applications	Suitable for: IP, WB
Species reactivity	Reacts with: Human Predicted to work with: Mouse, Rat, Rabbit, Cow, Pig, Chimpanzee, Rhesus monkey, Gorilla, Chinese hamster, Orangutan 
Immunogen	<p>Synthetic peptide within Human WDR42A aa 50-100. The exact sequence is proprietary. (NP_056541.2).</p> <p>Sequence:</p> <p>LTGDDGGPNRTSTESRGTDTESSGEDKSDSMEDTGHY SINDENRVHDRS E</p> <p>Database link: Q5TAQ9</p> <p> Run BLAST with  Run BLAST with</p>
Positive control	HeLa and 293T whole cell lysates.
General notes	<p>The Life Science industry has been in the grips of a reproducibility crisis for a number of years. Abcam is leading the way in addressing this with our range of recombinant monoclonal antibodies and knockout edited cell lines for gold-standard validation. Please check that this product meets your needs before purchasing.</p> <p>If you have any questions, special requirements or concerns, please send us an inquiry and/or contact our Support team ahead of purchase. Recommended alternatives for this product can be found below, along with publications, customer reviews and Q&As</p>

Properties

Form	Liquid
Storage instructions	Shipped at 4°C. Store at +4°C short term (1-2 weeks). Upon delivery aliquot. Store at -20°C long term. Avoid freeze / thaw cycle.
Storage buffer	<p>pH: 6.8</p> <p>Preservative: 0.09% Sodium azide</p> <p>Constituents: 99% Tris buffered saline, 0.1% BSA</p>

Purity	Immunogen affinity purified
Purification notes	ab176809 was affinity purified using an epitope specific to WDR42A immobilized on solid support.
Clonality	Polyclonal
Isotype	IgG

Applications

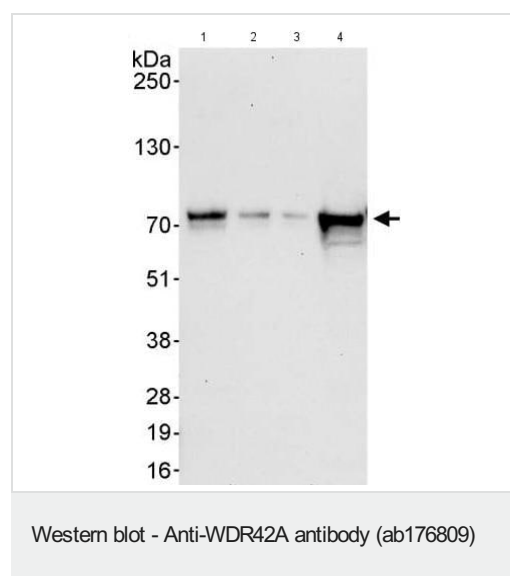
The Abpromise guarantee Our **Abpromise guarantee** covers the use of ab176809 in the following tested applications. The application notes include recommended starting dilutions; optimal dilutions/concentrations should be determined by the end user.

Application	Abreviews	Notes
IP		Use at 2-5 µg/mg of lysate.
WB		1/2000 - 1/10000. Predicted molecular weight: 67 kDa.

Target

Relevance This gene encodes a WD repeat-containing protein that interacts with the Cul4-Ddb1 E3 ligase macromolecular complex. May function as a substrate receptor for CUL4-DDB1 E3 ubiquitin-protein ligase complex. The protein contains 7 WD repeats. There are two isoforms produced by alternative splicing.

Images



All lanes : Anti-WDR42A antibody (ab176809) at 0.04 µg/ml

Lane 1 : HeLa whole cell lysate at 50 µg

Lane 2 : HeLa whole cell lysate at 15 µg

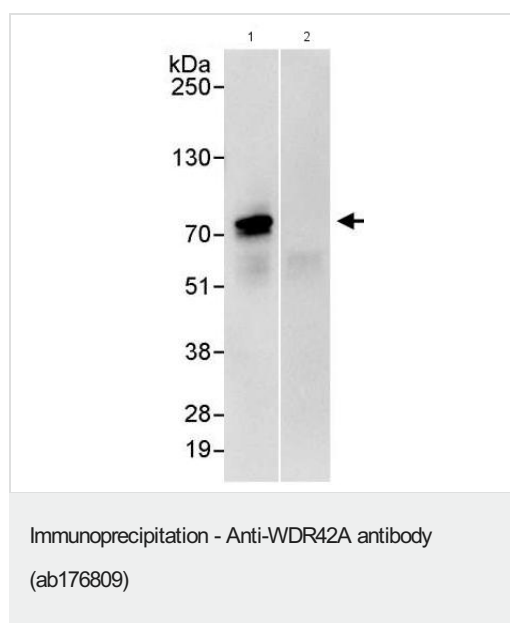
Lane 3 : HeLa whole cell lysate at 5 µg

Lane 4 : 293T whole cell lysate at 50 µg

Developed using the ECL technique.

Predicted band size: 67 kDa

Exposure time: 3 seconds



Detection of WDR42A in immunoprecipitates of HeLa whole cell lysate (1 mg for IP, 20% of IP loaded) using ab176809 at 3 µg/mg lysate for IP (Lane 1) and at 0.4 µg/ml for subsequent Western blot detection. Lane 2 represents control IgG IP.

Detection: Chemiluminescence with an exposure time of 10 seconds.

Please note: All products are "FOR RESEARCH USE ONLY. NOT FOR USE IN DIAGNOSTIC PROCEDURES"

Our Abpromise to you: Quality guaranteed and expert technical support

- Replacement or refund for products not performing as stated on the datasheet
- Valid for 12 months from date of delivery
- Response to your inquiry within 24 hours
- We provide support in Chinese, English, French, German, Japanese and Spanish
- Extensive multi-media technical resources to help you
- We investigate all quality concerns to ensure our products perform to the highest standards

If the product does not perform as described on this datasheet, we will offer a refund or replacement. For full details of the Abpromise, please visit <https://www.abcam.com/abpromise> or contact our technical team.

Terms and conditions

- Guarantee only valid for products bought direct from Abcam or one of our authorized distributors