




Product datasheet

Anti-WDR45 antibody ab168532

★★★★★ [2 Abreviews](#) [2 Images](#)

Overview

Product name	Anti-WDR45 antibody
Description	Mouse polyclonal to WDR45
Host species	Mouse
Tested applications	Suitable for: WB, ICC/IF
Species reactivity	Reacts with: Human Predicted to work with: Mouse, Xenopus laevis, Zebrafish 
Immunogen	Recombinant full length protein within Human WDR45 aa 1-400. The exact immunogen sequence used to generate this antibody is proprietary information. If additional detail on the immunogen is needed to determine the suitability of the antibody for your needs, please <u>contact</u> our Scientific Support team to discuss your requirements. <div>  Run BLAST with  Run BLAST with </div>
Positive control	WDR45 transfected 293T cell line; HeLa cells.
General notes	<p>The Life Science industry has been in the grips of a reproducibility crisis for a number of years. Abcam is leading the way in addressing this with our range of recombinant monoclonal antibodies and knockout edited cell lines for gold-standard validation. Please check that this product meets your needs before purchasing.</p> <p>If you have any questions, special requirements or concerns, please send us an inquiry and/or contact our Support team ahead of purchase. Recommended alternatives for this product can be found below, along with publications, customer reviews and Q&As</p>

Properties

Form	Liquid
Storage instructions	Shipped at 4°C. Store at +4°C short term (1-2 weeks). Upon delivery aliquot. Store at -20°C long term.
Storage buffer	pH: 7.4 Constituent: 100% PBS
Purity	Protein A purified
Clonality	Polyclonal
Isotype	IgG

Applications

The Abpromise guarantee

Our **Abpromise guarantee** covers the use of ab168532 in the following tested applications.

The application notes include recommended starting dilutions; optimal dilutions/concentrations should be determined by the end user.

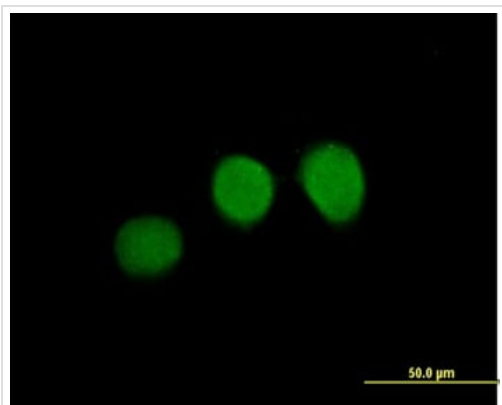
Application	Abreviews	Notes
WB	★★★★★ (1)	Use a concentration of 1 µg/ml. Predicted molecular weight: 39 kDa.
ICC/IF	★★★★★ (1)	Use a concentration of 10 µg/ml.

Target

Relevance

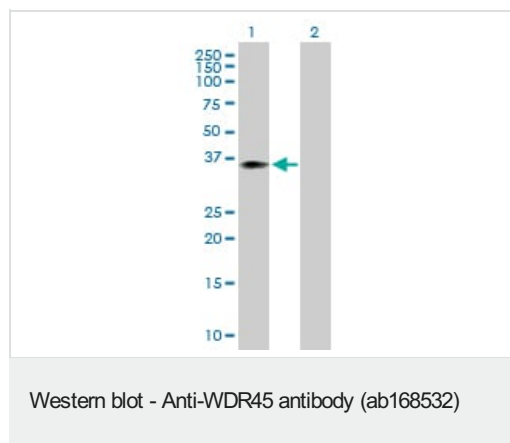
WDR45 is a member of the WD repeat protein family. WD repeat proteins are involved in a variety of cellular processes, including cell cycle progression, signal transduction, apoptosis, and gene regulation. This gene has a pseudogene at chromosome 4q31.3. Multiple alternatively spliced transcript variants encoding distinct isoforms have been found for this gene, but the biological validity and full-length nature of some variants have not been determined.

Images



Immunofluorescence analysis of HeLa cells, labeling WDR45 with ab168532 at 10µg/ml.

Immunocytochemistry/ Immunofluorescence - Anti-WDR45 antibody (ab168532)



All lanes : Anti-WDR45 antibody (ab168532) at 1 µg/ml

Lane 1 : WDR45 transfected 293T lysate

Lane 2 : Non-transfected 293T lysate

Lysates/proteins at 15 µl per lane.

Predicted band size: 39 kDa

Please note: All products are "FOR RESEARCH USE ONLY. NOT FOR USE IN DIAGNOSTIC PROCEDURES"

Our Abpromise to you: Quality guaranteed and expert technical support

- Replacement or refund for products not performing as stated on the datasheet
- Valid for 12 months from date of delivery
- Response to your inquiry within 24 hours
- We provide support in Chinese, English, French, German, Japanese and Spanish
- Extensive multi-media technical resources to help you
- We investigate all quality concerns to ensure our products perform to the highest standards

If the product does not perform as described on this datasheet, we will offer a refund or replacement. For full details of the Abpromise, please visit <https://www.abcam.com/abpromise> or contact our technical team.

Terms and conditions

- Guarantee only valid for products bought direct from Abcam or one of our authorized distributors