

## Product datasheet

### Anti-WDR5 antibody [2C2] ab56919

★★★★★ [2 Abreviews](#) [33 References](#) [4 Images](#)

#### Overview

<b>Product name</b>	Anti-WDR5 antibody [2C2]
<b>Description</b>	Mouse monoclonal [2C2] to WDR5
<b>Host species</b>	Mouse
<b>Tested applications</b>	<b>Suitable for:</b> WB, ICC/IF, ChIP, Flow Cyt
<b>Species reactivity</b>	<b>Reacts with:</b> Human
<b>Immunogen</b>	Recombinant fragment, corresponding to amino acids 16-121 of Human WDR5
<b>General notes</b>	<p>This product was changed from ascites to tissue culture supernatant on 24/1/19. Please note that the dilutions may need to be adjusted accordingly. If you have any questions, please do not hesitate to contact our scientific support team.</p> <p>The Life Science industry has been in the grips of a reproducibility crisis for a number of years. Abcam is leading the way in addressing this with our range of recombinant monoclonal antibodies and knockout edited cell lines for gold-standard validation. Please check that this product meets your needs before purchasing.</p> <p>If you have any questions, special requirements or concerns, please send us an inquiry and/or contact our Support team ahead of purchase. Recommended alternatives for this product can be found below, along with publications, customer reviews and Q&amp;As</p>

#### Properties

<b>Form</b>	Liquid
<b>Storage instructions</b>	Shipped at 4°C. Store at +4°C short term (1-2 weeks). Upon delivery aliquot. Store at -20°C or -80°C. Avoid freeze / thaw cycle.
<b>Storage buffer</b>	pH: 7.4
<b>Purity</b>	Tissue culture supernatant
<b>Purification notes</b>	Purified from TCS.
<b>Clonality</b>	Monoclonal
<b>Clone number</b>	2C2
<b>Isotype</b>	IgG2b
<b>Light chain type</b>	kappa

## Applications

### The Abpromise guarantee

Our **Abpromise guarantee** covers the use of ab56919 in the following tested applications.

The application notes include recommended starting dilutions; optimal dilutions/concentrations should be determined by the end user.

Application	Abreviews	Notes
WB	★★★★★ (1)	Use at an assay dependent concentration. Predicted molecular weight: 36 kDa.
ICC/IF		Use at an assay dependent concentration.
ChIP		Use at an assay dependent concentration. PubMed: 20864036
Flow Cyt		Use at an assay dependent concentration. <b>ab170192</b> - Mouse monoclonal IgG2b, is suitable for use as an isotype control with this antibody.

## Target

### Function

Contributes to histone modification. May position the N-terminus of histone H3 for efficient trimethylation at 'Lys-4'. As part of the MLL1/MLL complex it is involved in methylation and dimethylation at 'Lys-4' of histone H3. H3 'Lys-4' methylation represents a specific tag for epigenetic transcriptional activation. As part of the NSL complex it may be involved in acetylation of nucleosomal histone H4 on several lysine residues. May regulate osteoblasts differentiation.

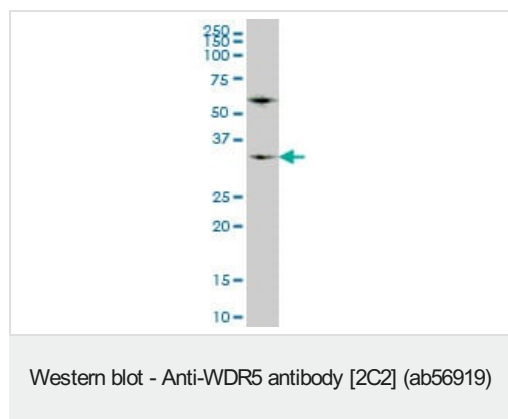
### Sequence similarities

Belongs to the WD repeat WDR5/wds family.  
Contains 7 WD repeats.

### Cellular localization

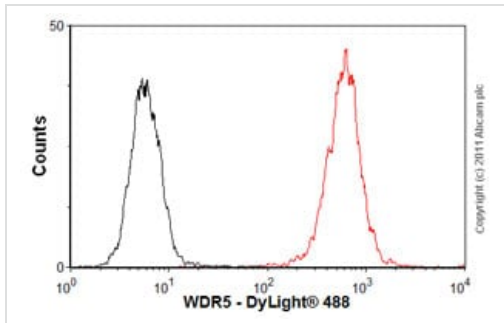
Nucleus.

## Images



WDR5 antibody (ab56919) at 1 µg/lane + Hs 181 S cell lysate at 25 µg/lane.

**This image was generated using the ascites version of the product.**

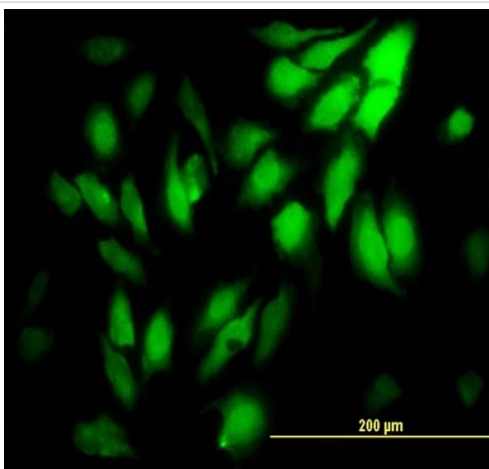


Flow Cytometry - Anti-WDR5 antibody [2C2]  
(ab56919)

Overlay histogram showing HeLa cells stained with ab56919 (red line). The cells were fixed with 80% methanol (5 min) and then permeabilized with 0.1% PBS-Tween for 20 min. The cells were then incubated in 1x PBS / 10% normal goat serum / 0.3M glycine to block non-specific protein-protein interactions followed by the antibody (ab56919, 1µg/1x10<sup>6</sup> cells) for 30 min at 22°C. The secondary antibody used was DyLight® 488 goat anti-mouse IgG (H+L) ([ab96879](#)) at 1/500 dilution for 30 min at 22°C. Isotype control antibody (black line) was mouse IgG2b [PLPV219] ([ab91366](#), 2µg/1x10<sup>6</sup> cells) used under the same conditions.

Acquisition of >5,000 events was performed. This antibody gave a positive signal in HeLa cells fixed with 4% paraformaldehyde/permeabilized in 0.1% PBS-Tween used under the same conditions.

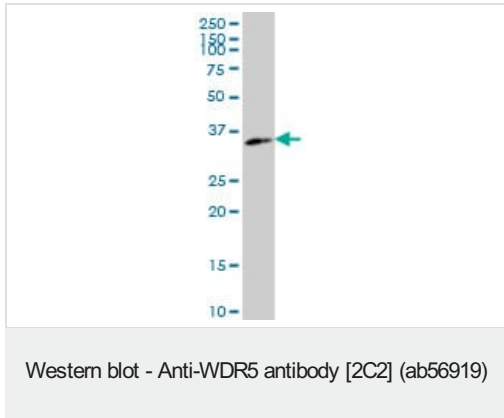
**This image was generated using the ascites version of the product.**



Immunocytochemistry/ Immunofluorescence - Anti-WDR5 antibody [2C2] (ab56919)

HeLa (human epithelial cell line from cervix adenocarcinoma) cells stained for WDR5 (green) using ab56919 at 10 µg/ml in ICC/IF.

**This image was generated using the ascites version of the product.**



Anti-WDR5 antibody [2C2] (ab56919) at 1 µg/ml + Hs 181.Tes cell lysate

**Predicted band size:** 36 kDa

**This image was generated using the ascites version of the product.**

**Please note:** All products are "FOR RESEARCH USE ONLY. NOT FOR USE IN DIAGNOSTIC PROCEDURES"

### Our Abpromise to you: Quality guaranteed and expert technical support

---

- Replacement or refund for products not performing as stated on the datasheet
- Valid for 12 months from date of delivery
- Response to your inquiry within 24 hours
- We provide support in Chinese, English, French, German, Japanese and Spanish
- Extensive multi-media technical resources to help you
- We investigate all quality concerns to ensure our products perform to the highest standards

If the product does not perform as described on this datasheet, we will offer a refund or replacement. For full details of the Abpromise, please visit <https://www.abcam.com/abpromise> or contact our technical team.

### Terms and conditions

---

- Guarantee only valid for products bought direct from Abcam or one of our authorized distributors