


Product datasheet

Anti-WDR68 antibody [EPR8712] α b138490

Recombinant RabMAb

[4 References](#) [4 Images](#)

Overview

Product name	Anti-WDR68 antibody [EPR8712]
Description	Rabbit monoclonal [EPR8712] to WDR68
Host species	Rabbit
Tested applications	Suitable for: Flow Cyt (Intra), WB, IHC-P Unsuitable for: IP
Species reactivity	Reacts with: Human Predicted to work with: Mouse, Rat 
Immunogen	Synthetic peptide within Human WDR68 aa 200-300. The exact sequence is proprietary.
Positive control	Fetal brain, BxPC-3, HeLa, 293T, and fetal heart lysates; Human kidney tissue
General notes	<p>This product is a recombinant monoclonal antibody, which offers several advantages including:</p> <ul style="list-style-type: none"> - High batch-to-batch consistency and reproducibility - Improved sensitivity and specificity - Long-term security of supply - Animal-free production <p>For more information see here.</p> <p>Our RabMAb[®] technology is a patented hybridoma-based technology for making rabbit monoclonal antibodies. For details on our patents, please refer to RabMAb[®] patents.</p>

Properties

Form	Liquid
Storage instructions	Shipped at 4°C. Store at -20°C.
Storage buffer	pH: 7.2 Preservative: 0.01% Sodium azide Constituents: 9% PBS, 40% Glycerol (glycerin, glycerine), 0.05% BSA, 50% Tissue culture supernatant
Purity	Protein A purified
Clonality	Monoclonal
Clone number	EPR8712

Isotype

IgG

Applications

The Abpromise guarantee

Our **Abpromise guarantee** covers the use of ab138490 in the following tested applications.

The application notes include recommended starting dilutions; optimal dilutions/concentrations should be determined by the end user.

Application	Abreviews	Notes
Flow Cyt (Intra)		1/100 - 1/500. ab172730 - Rabbit monoclonal IgG, is suitable for use as an isotype control with this antibody.
WB		1/1000 - 1/10000. Predicted molecular weight: 39 kDa.
IHC-P		1/100 - 1/250. Perform heat mediated antigen retrieval with citrate buffer pH 6 before commencing with IHC staining protocol.

Application notes

Is unsuitable for IP.

Target

Function

Involved in craniofacial development. Acts upstream of the EDN1 pathway and is required for formation of the upper jaw equivalent, the palatoquadrate. The activity required for EDN1 pathway function differs between the first and second arches (By similarity). Associates with DIAPH1 and controls GLI1 transcriptional activity. Could be involved in normal and disease skin development. May function as a substrate receptor for CUL4-DDB1 E3 ubiquitin-protein ligase complex.

Pathway

Protein modification; protein ubiquitination.

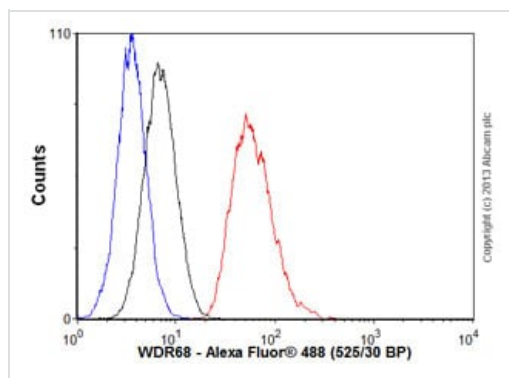
Sequence similarities

Belongs to the WD repeat DCAF7 family.
Contains 4 WD repeats.

Cellular localization

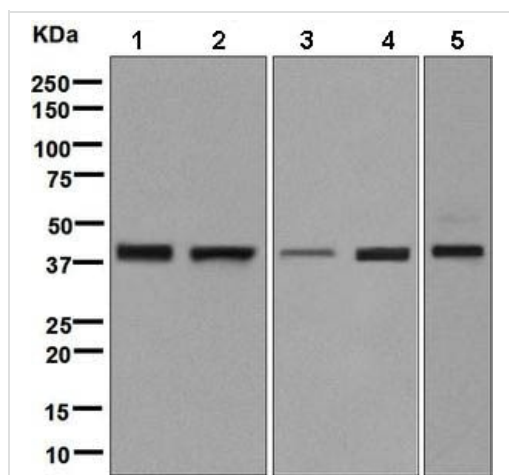
Cytoplasm. Nucleus. Overexpression of DIAHP1 or active RHOA causes translocation from the nucleus to cytoplasm.

Images



Flow Cytometry (Intracellular) - Anti-WDR68 antibody [EPR8712] (ab138490)

Overlay histogram showing HeLa cells stained with ab138490 (red line). The cells were fixed with 80% methanol (5 min) and then permeabilized with 0.1% PBS-Tween for 20 min. The cells were then incubated in 1x PBS / 10% normal goat serum / 0.3M glycine to block non-specific protein-protein interactions followed by the antibody (ab138490, 1/100 dilution) for 30 min at 22°C. The secondary antibody used was Alexa Fluor® 488 goat anti-rabbit IgG (H&L) ([ab150077](#)) at 1/2000 dilution for 30 min at 22°C. Isotype control antibody (black line) was rabbit IgG (monoclonal) (1 µg/1x10⁶ cells) used under the same conditions. Unlabelled sample (blue line) was also used as a control. Acquisition of >5,000 events were collected using a 20mW Argon ion laser (488nm) and 525/30 bandpass filter.



Western blot - Anti-WDR68 antibody [EPR8712] (ab138490)

All lanes : Anti-WDR68 antibody [EPR8712] (ab138490) at 1/1000 dilution

Lane 1 : Fetal brain lysate

Lane 2 : BxPC-3 lysate

Lane 3 : HeLa lysate

Lane 4 : 293T lysate

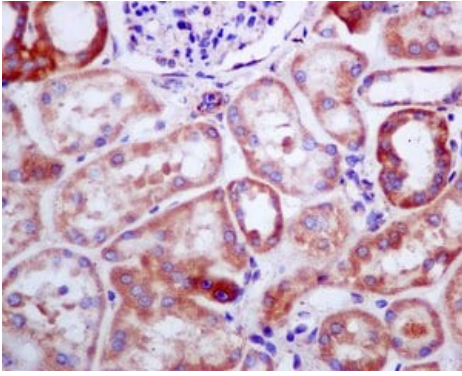
Lane 5 : Fetal heart lysate

Lysates/proteins at 10 µg per lane.

Secondary

All lanes : HRP labelled goat anti-rabbit at 1/2000 dilution

Predicted band size: 39 kDa



Immunohistochemistry (Formalin/PFA-fixed paraffin-embedded sections) - Anti-WDR68 antibody [EPR8712] (ab138490)

Immunohistochemical analysis of paraffin-embedded Human kidney tissue labelling WDR68 with ab138490 at 1/100 dilution.

Perform heat mediated antigen retrieval with citrate buffer pH 6 before commencing with IHC staining protocol.

Why choose a recombinant antibody?



Anti-WDR68 antibody [EPR8712] (ab138490)

Please note: All products are "FOR RESEARCH USE ONLY. NOT FOR USE IN DIAGNOSTIC PROCEDURES"

Our Abpromise to you: Quality guaranteed and expert technical support

- Replacement or refund for products not performing as stated on the datasheet
- Valid for 12 months from date of delivery
- Response to your inquiry within 24 hours
- We provide support in Chinese, English, French, German, Japanese and Spanish
- Extensive multi-media technical resources to help you
- We investigate all quality concerns to ensure our products perform to the highest standards

If the product does not perform as described on this datasheet, we will offer a refund or replacement. For full details of the Abpromise, please visit <https://www.abcam.com/abpromise> or contact our technical team.

Terms and conditions

- Guarantee only valid for products bought direct from Abcam or one of our authorized distributors