


## Product datasheet

# Anti-WDR79 antibody ab99376

[4 References](#) [3 Images](#)

### Overview

---

<b>Product name</b>	Anti-WDR79 antibody
<b>Description</b>	Rabbit polyclonal to WDR79
<b>Host species</b>	Rabbit
<b>Tested applications</b>	<b>Suitable for:</b> WB, IP, IHC-P
<b>Species reactivity</b>	<b>Reacts with:</b> Human <b>Predicted to work with:</b> Chimpanzee, Rhesus monkey, Gorilla 
<b>Immunogen</b>	Synthetic peptide, corresponding to a region between residue 1 and 50 of Human WDR79 (NP_060551.1)
<b>Positive control</b>	HeLa whole cell lysate ( <a href="#">ab150035</a> )
<b>General notes</b>	<p>The Life Science industry has been in the grips of a reproducibility crisis for a number of years. Abcam is leading the way in addressing this with our range of recombinant monoclonal antibodies and knockout edited cell lines for gold-standard validation. Please check that this product meets your needs before purchasing.</p> <p>If you have any questions, special requirements or concerns, please send us an inquiry and/or contact our Support team ahead of purchase. Recommended alternatives for this product can be found below, along with publications, customer reviews and Q&amp;As</p>

### Properties

---

<b>Form</b>	Liquid
<b>Storage instructions</b>	Shipped at 4°C. Upon delivery aliquot and store at -20°C. Avoid freeze / thaw cycles.
<b>Storage buffer</b>	pH: 6.8 Preservative: 0.09% Sodium azide Constituents: 0.1% BSA, Tris buffered saline
<b>Purity</b>	Immunogen affinity purified
<b>Clonality</b>	Polyclonal
<b>Isotype</b>	IgG

### Applications

---

## The Abpromise guarantee

Our **Abpromise guarantee** covers the use of ab99376 in the following tested applications.

The application notes include recommended starting dilutions; optimal dilutions/concentrations should be determined by the end user.

Application	Abreviews	Notes
WB		1/2000 - 1/10000. Predicted molecular weight: 59 kDa.
IP		Use at 2-5 µg/mg of lysate.
IHC-P		1/100 - 1/500. Perform heat mediated antigen retrieval with citrate buffer pH 6 before commencing with IHC staining protocol.

## Target

### Function

Essential component of the telomerase holoenzyme complex, a ribonucleoprotein complex essential for the replication of chromosome termini that elongates telomeres in most eukaryotes. In the telomerase holoenzyme complex, it controls telomerase localization to Cajal body. Required for delivery of TERC to telomeres during S phase and for telomerase activity. Binds small Cajal body RNAs (scaRNAs). The mRNA encoding this protein plays a critical role in the regulation of p53 expression at the post-transcriptional level; it is involved both in maintaining basal p53 mRNA levels and in p53 induction upon DNA damage.

### Tissue specificity

Expressed in all tissues and cell lines examined.

### Involvement in disease

Defects in WRAP53 are the cause of dyskeratosis congenita autosomal recessive type 3 (DKCB3) [MIM:613988]. A rare multisystem disorder caused by defective telomere maintenance. It is characterized by progressive bone marrow failure, and the clinical triad of reticulated skin hyperpigmentation, nail dystrophy, and mucosal leukoplakia. Common but variable features include premature graying, aplastic anemia, low platelets, osteoporosis, pulmonary fibrosis, and liver fibrosis among others. Early mortality is often associated with bone marrow failure, infections, fatal pulmonary complications, or malignancy.

### Sequence similarities

Contains 6 WD repeats.

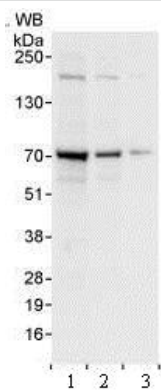
### Post-translational modifications

Phosphorylated upon DNA damage, probably by ATM or ATR.

### Cellular localization

Nucleus > Cajal body. Cytoplasm.

## Images



Western blot - Anti-WDR79 antibody (ab99376)

**All lanes :** Anti-WDR79 antibody (ab99376) at 0.04 µg/ml

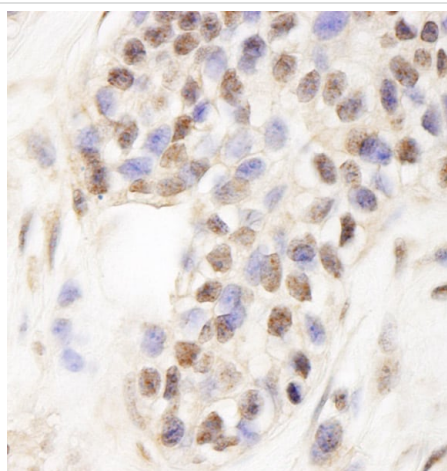
**Lane 1 :** HeLa whole cell lysate at 50 µg

**Lane 2 :** HeLa whole cell lysate at 15 µg

**Lane 3 :** HeLa whole cell lysate at 5 µg

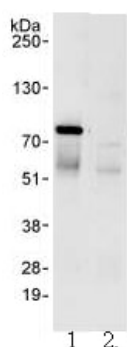
**Predicted band size:** 59 kDa

**Exposure time:** 30 seconds



Immunohistochemistry (Formalin/PFA-fixed paraffin-embedded sections) - Anti-WDR79 antibody (ab99376)

Immunohistochemistry (Formalin/PFA-fixed paraffin-embedded sections) analysis of human breast carcinoma tissue labelling WDR79 with ab99376 at 1/200 (1µg/ml). Detection: DAB.



Immunoprecipitation - Anti-WDR79 antibody (ab99376)

Lane 1 : Detection of Human WDR79 by Immunoprecipitation from HeLa cells(1 mg for IP, 20% of IP loaded), using 3µg/mg lysate .

Lane 2 : Control IgG

**Please note:** All products are "FOR RESEARCH USE ONLY. NOT FOR USE IN DIAGNOSTIC PROCEDURES"

## **Our Abpromise to you: Quality guaranteed and expert technical support**

---

- Replacement or refund for products not performing as stated on the datasheet
- Valid for 12 months from date of delivery
- Response to your inquiry within 24 hours
  
- We provide support in Chinese, English, French, German, Japanese and Spanish
- Extensive multi-media technical resources to help you
- We investigate all quality concerns to ensure our products perform to the highest standards

If the product does not perform as described on this datasheet, we will offer a refund or replacement. For full details of the Abpromise, please visit <https://www.abcam.com/abpromise> or contact our technical team.

## **Terms and conditions**

---

- Guarantee only valid for products bought direct from Abcam or one of our authorized distributors