


Product datasheet

Anti-WDTC1 antibody [EPR12504] - BSA and Azide free ab249799

Recombinant RabMAb

6 Images

Overview

Product name	Anti-WDTC1 antibody [EPR12504] - BSA and Azide free
Description	Rabbit monoclonal [EPR12504] to WDTC1 - BSA and Azide free
Host species	Rabbit
Tested applications	Suitable for: ICC/IF, WB, IP, IHC-P Unsuitable for: Flow Cyt
Species reactivity	Reacts with: Human Predicted to work with: Mouse, Rat 
Immunogen	Recombinant fragment within Human WDTC1. The exact sequence is proprietary. Database link: Q8N5D0
General notes	<p>ab249799 is the carrier-free version of ab174294.</p> <p>Our carrier-free antibodies are typically supplied in a PBS-only formulation, purified and free of BSA, sodium azide and glycerol. The carrier-free buffer and high concentration allow for increased conjugation efficiency.</p> <p>This conjugation-ready format is designed for use with fluorochromes, metal isotopes, oligonucleotides, and enzymes, which makes them ideal for antibody labelling, functional and cell-based assays, flow-based assays (e.g. mass cytometry) and Multiplex Imaging applications.</p> <p>Use our conjugation kits for antibody conjugates that are ready-to-use in as little as 20 minutes with <1 minute hands-on-time and 100% antibody recovery: available for fluorescent dyes, HRP, biotin and gold.</p> <p>This product is compatible with the Maxpar[®] Antibody Labeling Kit from Fluidigm, without the need for antibody preparation. Maxpar[®] is a trademark of Fluidigm Canada Inc.</p> <p>This product is a recombinant monoclonal antibody, which offers several advantages including:</p> <ul style="list-style-type: none"> - High batch-to-batch consistency and reproducibility - Improved sensitivity and specificity - Long-term security of supply - Animal-free production <p>For more information see here.</p> <p>Our RabMAb[®] technology is a patented hybridoma-based technology for making rabbit monoclonal antibodies. For details on our patents, please refer to RabMAb[®] patents.</p>

Properties

Form	Liquid
Storage instructions	Shipped at 4°C. Store at +4°C. Do Not Freeze.
Storage buffer	pH: 7.2 Constituent: PBS
Carrier free	Yes
Purity	Protein A purified
Clonality	Monoclonal
Clone number	EPR12504
Isotype	IgG

Applications

The Abpromise guarantee Our **Abpromise guarantee** covers the use of ab249799 in the following tested applications. The application notes include recommended starting dilutions; optimal dilutions/concentrations should be determined by the end user.

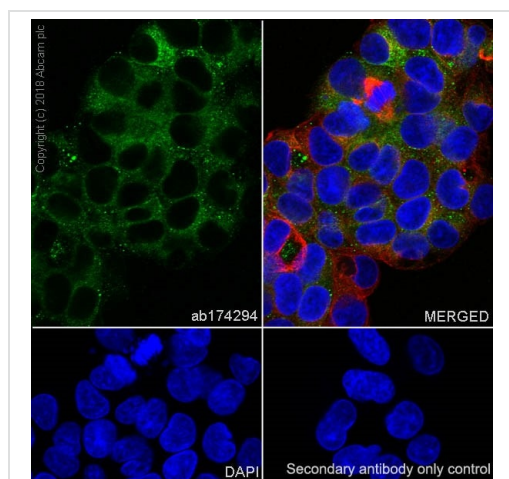
Application	Abreviews	Notes
ICC/IF		Use at an assay dependent concentration.
WB		Use at an assay dependent concentration. Predicted molecular weight: 76 kDa.
IP		Use at an assay dependent concentration.
IHC-P		Use at an assay dependent concentration. Perform heat mediated antigen retrieval with citrate buffer pH 6 before commencing with IHC staining protocol.

Application notes Is unsuitable for Flow Cyt.

Target

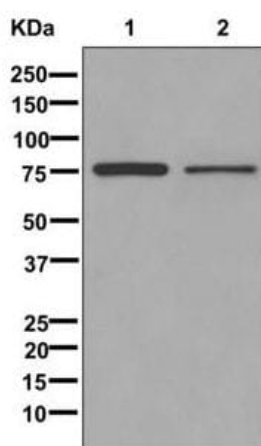
Relevance	WDTC1 contains 2 TPR repeats and 7 WD repeats. WDTC1, the ortholog of Drosophila Adipose Gene, associates with human obesity, modulated by MUFA intake. There are six named isoforms.
Cellular localization	Cytosol. Nucleus.

Images



Immunocytochemistry/ Immunofluorescence - Anti-WDTC1 antibody [EPR12504] - BSA and Azide free (ab249799)

This data was developed using **ab174294**, the same antibody clone in a different buffer formulation. Ab174294 staining WDTC1 in HepG2 (Human hepatocellular carcinoma epithelial cell) cells by Immunocytochemistry/Immunofluorescence. Cells were fixed with 4% paraformaldehyde and permeabilized with 0.1% TritonX-100. Samples were incubated with primary antibody at 1/50 dilution (1.6 µg/ml). An AlexaFluor®488 Goat anti-Rabbit (**ab150077**) was used as a secondary antibody at 1/1000 dilution (2 µg/ml). An AlexaFluor®594 Anti-alpha Tubulin antibody [DM1A] - Microtubule Marker, **ab195889** was used as a counterstain antibody (1/200, 2.5 µg/ml). DAPI was used as a nuclear counterstain. Confocal image showing cytoplasmic staining on HepG2 cell line.



Western blot - Anti-WDTC1 antibody [EPR12504] - BSA and Azide free (ab249799)

All lanes : Anti-WDTC1 antibody [EPR12504] (**ab174294**) at 1/10000 dilution

Lane 1 : HepG2 cell lysate

Lane 2 : A431 cell lysate

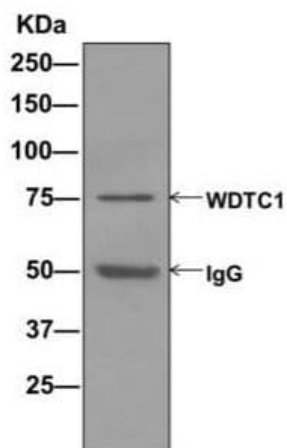
Lysates/proteins at 10 µg per lane.

Secondary

All lanes : Goat anti-rabbit HRP conjugated at 1/2000 dilution

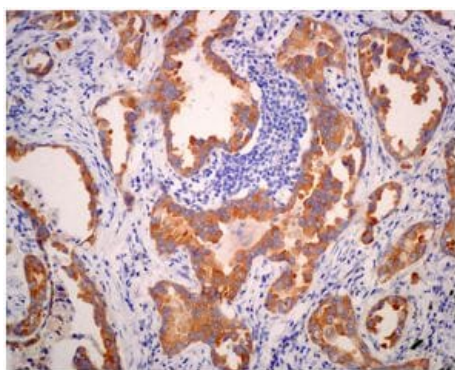
Predicted band size: 76 kDa

This data was developed using **ab174294**, the same antibody clone in a different buffer formulation.



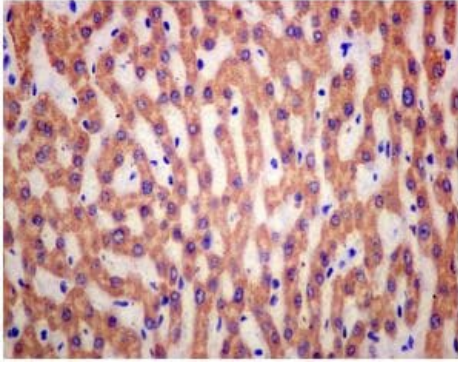
Immunoprecipitation - Anti-WDTC1 antibody
[EPR12504] - BSA and Azide free (ab249799)

This data was developed using [ab174294](#), the same antibody clone in a different buffer formulation. Western blot analysis on immunoprecipitation pellet from HepG2 cell lysate immunoprecipitated using [ab174294](#) at 1/10 dilution. Detection utilized HRP-conjugated anti-rabbit IgG which preferentially detects the non-reduced form of rabbit IgG.



Immunohistochemistry (Formalin/PFA-fixed paraffin-embedded sections) - Anti-WDTC1 antibody
[EPR12504] - BSA and Azide free (ab249799)

This data was developed using [ab174294](#), the same antibody clone in a different buffer formulation. Immunohistochemical analysis of paraffin-embedded Human lung carcinoma tissue labeling WDTC1 with [ab174294](#) at 1/50 dilution. Perform heat mediated antigen retrieval with citrate buffer pH 6 before commencing with IHC staining protocol.



Immunohistochemistry (Formalin/PFA-fixed paraffin-embedded sections) - Anti-WDTC1 antibody [EPR12504] - BSA and Azide free (ab249799)

This data was developed using **ab174294**, the same antibody clone in a different buffer formulation. Immunohistochemical analysis of paraffin-embedded Human liver tissue labeling WDTC1 with **ab174294** at 1/50 dilution. Perform heat mediated antigen retrieval with citrate buffer pH 6 before commencing with IHC staining protocol.

Why choose a recombinant antibody?



Anti-WDTC1 antibody [EPR12504] - BSA and Azide free (ab249799)

Please note: All products are "FOR RESEARCH USE ONLY. NOT FOR USE IN DIAGNOSTIC PROCEDURES"

Our Abpromise to you: Quality guaranteed and expert technical support

- Replacement or refund for products not performing as stated on the datasheet
- Valid for 12 months from date of delivery
- Response to your inquiry within 24 hours
- We provide support in Chinese, English, French, German, Japanese and Spanish
- Extensive multi-media technical resources to help you
- We investigate all quality concerns to ensure our products perform to the highest standards

If the product does not perform as described on this datasheet, we will offer a refund or replacement. For full details of the Abpromise, please visit <https://www.abcam.com/abpromise> or contact our technical team.

Terms and conditions

- Guarantee only valid for products bought direct from Abcam or one of our authorized distributors