

Product datasheet

Anti-Wee1 antibody [EPR20899] ab233540

KO VALIDATED Recombinant RabMAB

[2 References](#) [2 Images](#)

Overview

Product name	Anti-Wee1 antibody [EPR20899]
Description	Rabbit monoclonal [EPR20899] to Wee1
Host species	Rabbit
Tested applications	Suitable for: WB
Species reactivity	Reacts with: Schizosaccharomyces pombe
Immunogen	Recombinant fragment. This information is proprietary to Abcam and/or its suppliers.
Positive control	WB: Fission yeast (Schizosaccharomyces pombe) whole cell lysate.
General notes	<p>This product is a recombinant monoclonal antibody, which offers several advantages including:</p> <ul style="list-style-type: none">- High batch-to-batch consistency and reproducibility- Improved sensitivity and specificity- Long-term security of supply- Animal-free production <p>For more information see here.</p> <p>Our RabMAB[®] technology is a patented hybridoma-based technology for making rabbit monoclonal antibodies. For details on our patents, please refer to RabMAB[®] patents.</p>

Properties

Form	Liquid
Storage instructions	Shipped at 4°C. Store at +4°C short term (1-2 weeks). Upon delivery aliquot. Store at -20°C long term. Avoid freeze / thaw cycle.
Storage buffer	pH: 7.2 Preservative: 0.01% Sodium azide Constituents: PBS, 40% Glycerol (glycerin, glycerine), 0.05% BSA
Purity	Protein A purified
Clonality	Monoclonal
Clone number	EPR20899
Isotype	IgG

Applications

The Abpromise guarantee

Our **Abpromise guarantee** covers the use of ab233540 in the following tested applications.

The application notes include recommended starting dilutions; optimal dilutions/concentrations should be determined by the end user.

Application	Abreviews	Notes
WB		1/1000. Detects a band of approximately 110 kDa (predicted molecular weight: 96 kDa).

Target

Function

Acts as a negative regulator of entry into mitosis (G2 to M transition) by protecting the nucleus from cytoplasmically activated cyclin B1-complexed CDK1 before the onset of mitosis by mediating phosphorylation of CDK1 on 'Tyr-15'. Specifically phosphorylates and inactivates cyclin B1-complexed CDK1 reaching a maximum during G2 phase and a minimum as cells enter M phase. Phosphorylation of cyclin B1-CDK1 occurs exclusively on 'Tyr-15' and phosphorylation of monomeric CDK1 does not occur. Its activity increases during S and G2 phases and decreases at M phase when it is hyperphosphorylated. A correlated decrease in protein level occurs at M/G1 phase, probably due to its degradation.

Sequence similarities

Belongs to the protein kinase superfamily. Ser/Thr protein kinase family. WEE1 subfamily. Contains 1 protein kinase domain.

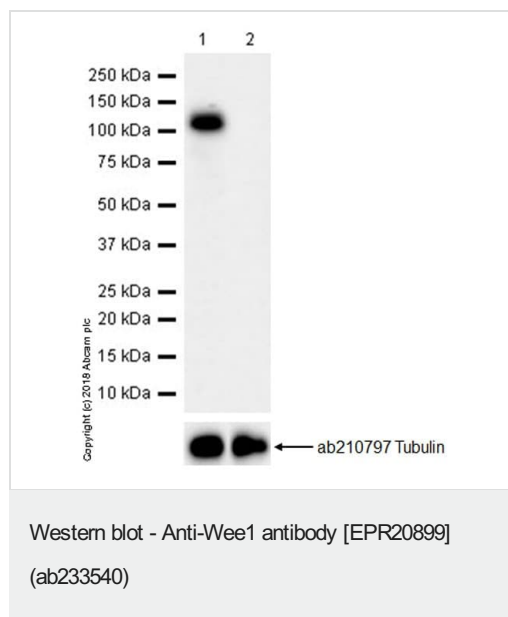
Post-translational modifications

Phosphorylated during M and G1 phases. Also autophosphorylated. Ubiquitinated and degraded at the onset of G2/M phase.

Cellular localization

Nucleus.

Images



All lanes : Anti-Wee1 antibody [EPR20899] (ab233540) at 1/1000 dilution

Lane 1 : Wild-type Schizosaccharomyces pombe whole cell lysate

Lane 2 : Wee1 knockout Schizosaccharomyces pombe whole cell lysate

Lysates/proteins at 10 µg per lane.

Secondary

All lanes : Goat Anti-Rabbit IgG H&L (HRP) (**ab97051**) at 1/100000 dilution

Developed using the ECL technique.

Predicted band size: 96 kDa

Observed band size: 110 kDa

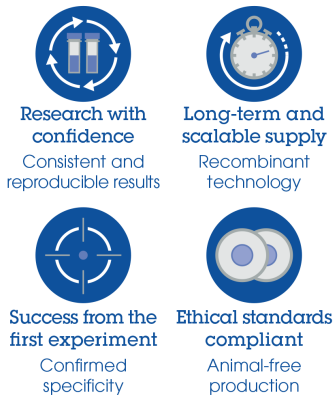
Exposure time: 70 seconds

Blocking and dilution buffer: 5% NFDm/TBST.

ab233540 was shown to specifically react with Wee1 in wild-type fission yeast cells as signal was lost in Wee1 knockout cells. Wild-type and Wee1 knockout samples were subjected to SDS-PAGE. ab233540 and **ab210797** (Rabbit anti-Tubulin loading control) were incubated 1 hour at room temperature at 1/1000 dilution and 1/1000 dilution respectively. Blots were developed with Goat Anti-Rabbit IgG, (H+L), Peroxidase conjugated (**ab97051**) secondary antibody at 1/100,000 dilution for 1 hour at room temperature before imaging. The blot was developed on a BIO-RAD® ChemiDoc™ MP instrument using the ECL technique.

Wee1 knockout and WT fission yeast whole cell lysates were kindly provided by Dr Quanwen Jin.

Why choose a recombinant antibody?



- Research with confidence**
Consistent and reproducible results
- Long-term and scalable supply**
Recombinant technology
- Success from the first experiment**
Confirmed specificity
- Ethical standards compliant**
Animal-free production

Anti-Wee1 antibody [EPR20899] (ab233540)

Please note: All products are "FOR RESEARCH USE ONLY. NOT FOR USE IN DIAGNOSTIC PROCEDURES"

Our Abpromise to you: Quality guaranteed and expert technical support

- Replacement or refund for products not performing as stated on the datasheet
- Valid for 12 months from date of delivery
- Response to your inquiry within 24 hours
- We provide support in Chinese, English, French, German, Japanese and Spanish
- Extensive multi-media technical resources to help you
- We investigate all quality concerns to ensure our products perform to the highest standards

If the product does not perform as described on this datasheet, we will offer a refund or replacement. For full details of the Abpromise, please visit <https://www.abcam.com/abpromise> or contact our technical team.

Terms and conditions

- Guarantee only valid for products bought direct from Abcam or one of our authorized distributors