



Anti-WEE2 antibody ab121943

★★★★★ [1 Abreviews](#) [1 References](#) [5 Images](#)

Overview

Product name	Anti-WEE2 antibody
Description	Rabbit polyclonal to WEE2
Host species	Rabbit
Tested applications	Suitable for: ICC, IHC-P
Species reactivity	Reacts with: Human
Immunogen	<p>Recombinant fragment within Human WEE2 aa 300-400. The exact immunogen sequence used to generate this antibody is proprietary information. If additional detail on the immunogen is needed to determine the suitability of the antibody for your needs, please contact our Scientific Support team to discuss your requirements.</p> <p>Database link: P0C1S8</p> <p style="text-align: right;">  Run BLAST with  Run BLAST with </p>
Positive control	IHC-P: Human skin, testis, kidney, and endometrium tissues. ICC: U-2 OS cells.
General notes	<p>The Life Science industry has been in the grips of a reproducibility crisis for a number of years. Abcam is leading the way in addressing this with our range of recombinant monoclonal antibodies and knockout edited cell lines for gold-standard validation. Please check that this product meets your needs before purchasing.</p> <p>If you have any questions, special requirements or concerns, please send us an inquiry and/or contact our Support team ahead of purchase. Recommended alternatives for this product can be found below, along with publications, customer reviews and Q&As</p>

Properties

Form	Liquid
Storage instructions	Shipped at 4°C. Upon delivery aliquot and store at -20°C. Avoid repeated freeze / thaw cycles.
Storage buffer	<p>pH: 7.20</p> <p>Preservative: 0.02% Sodium azide</p> <p>Constituents: 59% PBS, 40% Glycerol (glycerin, glycerine)</p>
Purity	Immunogen affinity purified
Clonality	Polyclonal
Isotype	IgG

Applications

The Abpromise guarantee

Our **Abpromise guarantee** covers the use of ab121943 in the following tested applications.

The application notes include recommended starting dilutions; optimal dilutions/concentrations should be determined by the end user.

Application	Abreviews	Notes
ICC		Use a concentration of 0.25 - 2 µg/ml.
IHC-P		1/500 - 1/1000. Perform heat mediated antigen retrieval with citrate buffer pH 6 before commencing with IHC staining protocol.

Target

Function

Oocyte-specific protein tyrosine kinase that phosphorylates and inhibits CDK1 and acts as a key regulator of meiosis during both prophase I and metaphase II. Required to maintain meiotic arrest in oocytes during the germinal vesicle (GV) stage, a long period of quiescence at dictyate prophase I, by phosphorylating CDK1 at 'Tyr-15', leading to inhibit CDK1 activity and prevent meiotic reentry. Also required for metaphase II exit during egg activation by phosphorylating CDK1 at 'Tyr-15', to ensure exit from meiosis in oocytes and promote pronuclear formation.

Tissue specificity

Expressed in testis.

Sequence similarities

Belongs to the protein kinase superfamily. Ser/Thr protein kinase family. WEE1 subfamily. Contains 1 protein kinase domain.

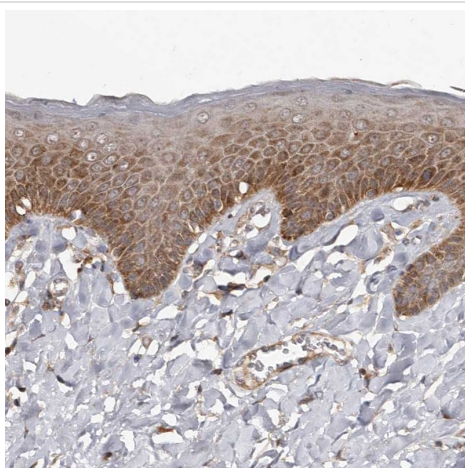
Post-translational modifications

Phosphorylation leads to increase its activity.

Cellular localization

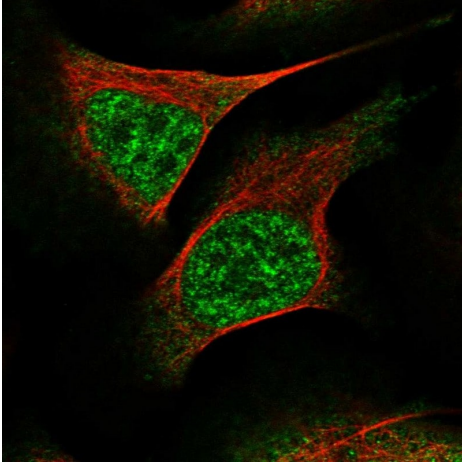
Nucleus.

Images



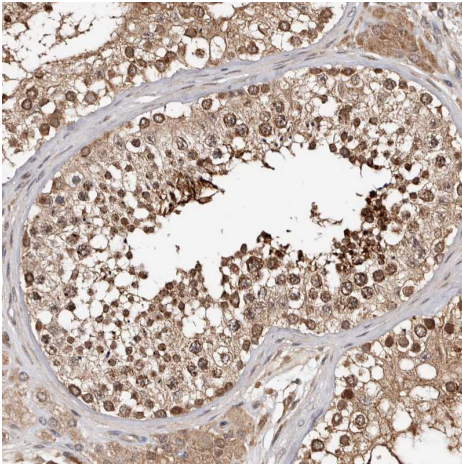
Immunohistochemistry (Formalin/PFA-fixed paraffin-embedded sections) analysis of human skin tissue labeling WEE2 with ab121943 at 1/500 dilution. Heat mediated antigen retrieval performed with citrate buffer pH 6 before commencing with IHC staining protocol.

Immunohistochemistry (Formalin/PFA-fixed paraffin-embedded sections) - Anti-WEE2 antibody (ab121943)



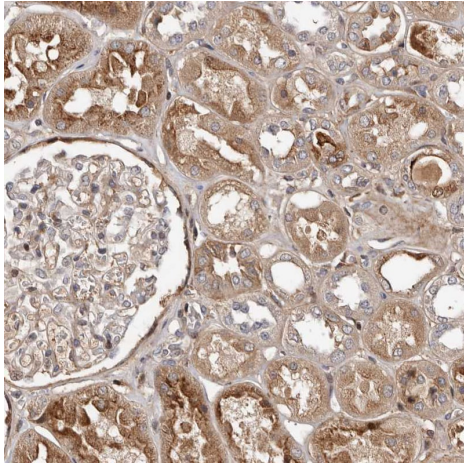
Immunocytochemistry - Anti-WEE2 antibody
(ab121943)

Immunocytochemistry analysis of U-2 OS (human bone osteosarcoma epithelial cell line) cells labelling WEE2 with ab121943 at 2 µg/mL.



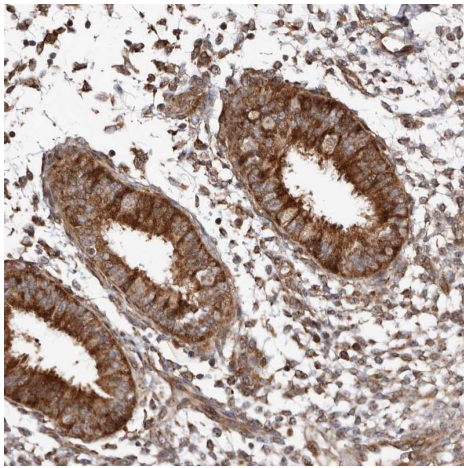
Immunohistochemistry (Formalin/PFA-fixed paraffin-embedded sections) - Anti-WEE2 antibody
(ab121943)

Immunohistochemistry (Formalin/PFA-fixed paraffin-embedded sections) analysis of human testis tissue labeling WEE2 with ab121943 at 1/500 dilution. Heat mediated antigen retrieval performed with citrate buffer pH 6 before commencing with IHC staining protocol.



Immunohistochemistry (Formalin/PFA-fixed paraffin-embedded sections) - Anti-WEE2 antibody (ab121943)

Immunohistochemistry (Formalin/PFA-fixed paraffin-embedded sections) analysis of human kidney tissue labeling WEE2 with ab121943 at 1/500 dilution. Heat mediated antigen retrieval performed with citrate buffer pH 6 before commencing with IHC staining protocol.



Immunohistochemistry (Formalin/PFA-fixed paraffin-embedded sections) - Anti-WEE2 antibody (ab121943)

Immunohistochemistry (Formalin/PFA-fixed paraffin-embedded sections) analysis of human endometrium tissue labeling WEE2 with ab121943 at 1/500 dilution. Heat mediated antigen retrieval performed with citrate buffer pH 6 before commencing with IHC staining protocol.

Please note: All products are "FOR RESEARCH USE ONLY. NOT FOR USE IN DIAGNOSTIC PROCEDURES"

Our Abpromise to you: Quality guaranteed and expert technical support

- Replacement or refund for products not performing as stated on the datasheet
- Valid for 12 months from date of delivery
- Response to your inquiry within 24 hours
- We provide support in Chinese, English, French, German, Japanese and Spanish
- Extensive multi-media technical resources to help you
- We investigate all quality concerns to ensure our products perform to the highest standards

If the product does not perform as described on this datasheet, we will offer a refund or replacement. For full details of the Abpromise,

please visit <https://www.abcam.com/abpromise> or contact our technical team.

Terms and conditions

- Guarantee only valid for products bought direct from Abcam or one of our authorized distributors